



HITS CHICAGO

SEPTEMBER DRESSAGE AT LAMPLIGHT



HITS

HITS, LLC. | PO Box 130, Saugerties, NY 12477
845.246.8833 | info@HITSShows.com | HITSShows.com

YOUR CONNECTION TO DRESSAGE

EDUCATION • COMPETITION • ACHIEVEMENT

© John Borys Photography



www.usdf.org



United States
Dressage
Federation™



HITS

CHICAGO, IL

Official Prize List for
September Dressage at Lamplight – September 20-21

Licensed by the United States Equestrian Federation
USEF/USDF Recognition Number #316763 Level Two Competition
2025 ProElite/USDF North Central Series Qualifier and Final
Lamplight Equestrian Center, Wayne, IL



Opening Date: August 18, 2025

Received By/Closing Date: September 10, 2025

JUDGES

JaneAyers (S) & (R), WI, Susan Graham-White (S) & (R), MD

TECHNICAL DELEGATE

Kelly Cyr, CT (r)

STAFF

SHOW MANAGER	Tom Urban	Tom@HITSShows.com
SHOW SECRETARY	Kathy Mucha	Kathy@HITSShows.com
ENTRY SECRETARY	Teresa Uddo	
SPORT HORSE BREEDING MANAGER	Teresa Uddo	Tuddo66@gmail.com, 352.636.2669
VETERINARIAN (on call)	Dr. Marshall Stevens, Stevens Equine	616.560.2518
FARRIER (on call)	Archie Linn	815.378.2766
SHOW PHOTOGRAPHER	Andrew Ryback Photography	224.318.5455
		info@AndrewRyback.com
EMT	on grounds during show hours	

OFFICIAL PRIZE LIST POSTED HITSSHOWS.COM

ONLINE ENTRIES

Available on Equestrian-hub.com on opening date (**NOTE This is a new online entry system this year**)
Draw checks in US Funds only payable to HITS. No entries accepted without payment.

ENTRY INFORMATION REQUIREMENT

Competitors are responsible to include all USDF and USEF memberships for horse, owner, rider, trainer, and coach listed on entry or pay non-member fees. Freestyle classes must include a copy of qualifying test with entry.





dever[®]
INC.
GOLF CAR SALES & RENTALS



PROUDLY SERVING THE EQUINE INDUSTRY FOR OVER
30 YEARS, **dever** GOLF CARS CAN FULFILL ALL OF
YOUR **SALES, SERVICE, AND RENTAL** NEEDS!

FOR ALL YOUR SALES AND
RENTAL NEEDS, VISIT

WWW.DEVERINC.COM

OR TO RESERVE YOUR
RENTAL BY PHONE, CALL

859-455-9586

(OPTION 4 FOR RESERVATIONS)

**RESERVE EARLY
TO GUARANTEE
AVAILABILITY!**



ENTRY FEES

OFFICE FEE	\$55 per horse/rider combination per show.
CLASS FEE	See class list on page 9.
VILLAGE OF WAYNE TAX	\$12.50 tax per competing horse – payable only once per weekend.
LATE ENTRY FEE	\$50 per show if postmarked and received after the Received By/Closing Date of August 11th.
INCOMPLETE ENTRY FEE	\$20 per entry.
POST ENTRIES AT SHOW	Will be taken as scheduling permits, class fee plus \$10.00 (must request by 3 PM the day prior).
EMAILED ENTRIES	\$10 per entry.
CHARGE CARD FEE	A fee of 3% will be charged on all credit card transactions.
RIDER/HORSE CHANGE FEE	\$25 for either rider or horse change after entries submitted.
NON-COMPETE HORSE	\$80 for the weekend. Must fill out entry form for bridle number and pay office fee.

STABLING FEES

STABLING/TACK STALL FEE	Permanent and Temporary stalls are 10' x 10' with doors.
WEEKEND STABLING	12 PM Friday to 7 PM Sunday) - \$175/stall
DAILY STABLING	(12 PM to 7 PM the following day) - \$100/stall
ADDITIONAL NIGHTS STABLING	\$40/stall - per night (other than show dates)
BEDDING	\$12/bag. Order on entry form or at show office.
ADDITIONAL NIGHTS STABLING	\$40/stall - per night (other than show dates)
BEDDING	\$12/bag. Order on entry form or at show office. No initial bedding will be supplied. <i>minimum of 2 bags required</i>
OR PAY DISPOSAL FEE	\$25/stall. Competitors not ordering 2 shavings will be charged a disposal fee per stall.
RV HOOKUP	\$175/weekend or \$100/night (includes water and electrical hookup). Indicate on entry either 30 or 50 amps. Septic pump-outs can be arranged in the show office for an additional charge.

RULES & REGULATIONS

USEF Equine Vaccination Rule & Health Requirements for entry to show grounds in 2025: All horses entering the showgrounds of a USEF licensed competition MUST be accompanied by documentation showing vaccinations for Equine Influenza Virus (Flu) and Equine Herpes Virus (Rhinopneumonitis) within 6 months of the show dates. This is mandatory for every horse entry. See USEF rule GR844. Horses must also have a current negative EIA/Coggins test within 12 months of the show dates. A health certificate (30-day) is needed on all out of state horses. Horses not entered in the show may not be brought onto the show grounds without prior arrangement with show management.

Entry Cancellation/Refunds: Cancellations accepted only in writing by mail or e-mail prior to or on the closing date. Entire entry refunded minus the office fee. No refunds of any kind for any reason, including Act of God, will be given after the closing date or throughout the competition. All fees collected on behalf of USEF and USDF to be submitted to the Federation provided all outstanding fees are paid in full; else it will be applied to those fees. All entries are accepted with this understanding.

Great American Insurance Group (GAIG)/USDF Qualifying Classes: Indicate that the class is to count for qualifying by placing a Q after the class number on your entry. Qualifying does not require a separate ride. An exhibitor riding in the Open, AA, or JR/YR classes must pay an additional \$20 USDF qualifying fee to have this score entered in the GAIG/USDF qualifying division at that level.

Confirmation/Ride Times: Confirmation of entry will be emailed. All email addresses must be clearly printed. Ride times and show updates will be posted on Equestrian-hub.com. Entries taken on a first come, first served basis. Entries may close early if time limits for judges are filled. Remaining entries received before the received by date will be placed on a wait list.

Address: Lamplight Equestrian Center, 6N940 Dunham Road, Wayne IL, 60184

Directions: From E, NE, and NW: I-90: Exit Hwy 59. From Hwy 59: Stearns Road west. Turn south on Dunham Road and right on Lamplight Trail (show entrance).

Directions: From SE and SW: I-88, exit Fairview N which turns into Dunham Rd, Lamplight Trail (show entrance) on the left.

Hotels: The following hotels are the official lodging partners of Lamplight Equestrian Center: Holiday Inn Express 630-587-6564, Hilton Garden Inn 630 584-0700, and Fairfield Inn 630-845-5500.

Awards for USEF Classes: Divisions (JR/YR, AA, Open) may be run concurrently as one class. Divisions will be pinned separately. Riders must clearly specify division choice. When no designation is made, riders will automatically be entered as Open. Riders may enter only one division per class. Ribbons to sixth place for each class, prize for first place if three or more in division. No awards for Qualifying classes. Championships and reserves awarded for the highest percentage at each USDF/USEF/FEI level at each division for the weekend. Freestyles are excluded from all Championship and Reserve awards. Ribbons can be picked up in the show office at the conclusion of each class.

Pony Riders/ Pony Measurements: If you do not have a measurement card done on your pony, you must notify management in advance of the show start of any ponies needing a measurement so a time can be arranged for this service. Management will arrange a measurement

time with the veterinarian and technical delegate. It will be the pony owner's responsibility for the fee charged by the veterinarian. This must be done prior to your first pony test ride.

Arenas: Outdoor arenas have all-weather GGT mix sand/fiber footing. Warm-up arenas are of same footing. All tests in standard arena, unless entries warrant, then some tests may be held in a short arena. Lunging in separate designated area only.

Concessions: Food and concessions will be available on the show grounds during competition hours.

Warning: Under the Equine Activity Liability Act, each participant who participates in an equine activity expressly assumes the risks of engaging in and legal responsibility for injury, loss, or damage to person or property resulting from the risk of equine activities.

Weather/Acts of God/Accidents or Emergency Policy: Management reserves the right to cancel any classes due to hazardous weather, acts of God, accidents, or emergencies. Every effort will be made to reschedule with priority given to the USEF program classes. No refunds for cancellations due to hazardous weather, acts of God, accidents, or emergencies. See USEF rule GR311.

Golf Cars/Mopeds/other Motorized Vehicles: Minors who do not have a valid driver's license which allows them to operate a motorized vehicle in the state in which they reside will not be permitted to operate a motorized vehicle of any kind, including, but not limited to, golf carts, motorcycles, scooters, or farm utility vehicles, on the competition grounds of licensed competitions. Minors who have a valid temporary license may operate the above described motorized vehicles as long as they are accompanied by an adult with a valid driver's license. The parent/legal guardian or individual who signs the entry blank as a parent or guardian of a minor operating a motorized vehicle in violation of this rule are solely responsible for any damages, claims, losses or actions resulting from that operation. Violations of this rule will be cause for penalties against those responsible for the child committing the offense. Wheelchairs and other mobility assistance devices for individuals with disabilities are exempt from this rule.

The unsafe use of personal electronic transport devices, as determined by the competition officials and management in their sole discretion, that do not require a driver's license to operate, including but not limited to segways, hover boards, and single wheeled scooters is prohibited on competition grounds. Operating such devices in areas where people gather may be deemed "unsafe use" if there is a risk of harm to others. If the operator of the device is a minor, the parent/legal guardian or individual who signs the entry blank as a parent or guardian of a minor operating the device in violation of this rule is accountable and may be subject to penalties.

Wheelchairs and other mobility assistance devices for individuals with disabilities are exempt from this rule. **See USEF rule GR 1301.7.**

Amateur (AA) Classes: Individuals possessing current amateur certification are only eligible as Adult Amateurs (AA) from the beginning of the calendar year in which they reach age 22. Only active United States Equestrian Federation (USEF) members may obtain amateur status. (Exception: Equine Canada members in possession of current EC membership may sign for USEF Amateur status on a show by show basis at no cost). Participants must possess current USEF Amateur status and qualify under the USEF Amateur rules. If opportunity classes at Dressage Competitions are restricted to AA, riders are required to have an amateur status with USEF.

Junior/Young Rider Classes (JR/YR): Riders are eligible to compete in these classes until the end of the calendar year in which they reach the age of 21.

Pony Division: For this competition, classes are offered from USEF Training Level through USEF Third level with classes designated for JR/YR, Adult Amateur (AA), and Open riders.

- The pony division is open to all breeds that meets the following measurement requirements. In the Dressage Division, a pony is an animal that does not exceed 148 cm (14.23 hh) without shoes, and 149 cm (14.27 hh) with shoes. The pony can be of any sex (mare, stallion, or gelding).
- Ponies under the age of eight and in possession of a valid temporary card from another division or discipline should submit a copy with their entry.
- Measurement will be required for these pony specific classes if they do not currently have a valid measurement card.
- Measurement will be yearly beginning from the age of three (36 months) until the pony has reached the age of eight years. Animals three through seven years old will be issued an annual Temporary Certificate of Measurement and must be re measured annually until the age of eight years. Animals eight years and older will be issued Standard Certificates of Measurement which will not need to be renewed. Measurement must be done on USEF Combined Driving and Dressage Pony Measurement form.
- Individual responsible for presenting the pony for measurement must be 18 years old. Animals submitted for measurement or re measurement must show no evidence of lameness, and must be jogged for soundness prior to the measurement. Animals showing evidence of lameness are not eligible for measurement or re measurement.
- The pony must be entered to compete at the competition for a measurement to take place.
- When the competition veterinarian is on call and an alternative measurement time is necessary, management must receive a written request for measurement from the owner or agent at least five days prior to the start of competition to set up a time.

Classes per Day: Horses are limited to a maximum of three Dressage rides per day at Fourth Level and below (including Rider Tests) or two Dressage rides per day above Fourth Level. Horses competing at both Fourth Level and Prix St. Georges, or their equivalents, are limited to two Dressage rides per day. Dressage Seat Equitation, Quadrille, Pas de Deux and Materiale classes are excluded from the maximum limit of rides per day and horses in these classes may compete at any level for which they are otherwise eligible during the same competition.

Consecutive Levels: Horses may enter no more than two consecutive levels, Freestyle levels included, at any one competition.

See the "General Regulations and Entry Specification Section" for additional policies this show subscribes to and follows.

Thank You!

SPONSORS

DIAMOND SPONSORS



GOLD SPONSORS



SILVER SPONSORS



Premier

Sotheby's
INTERNATIONAL REALTY

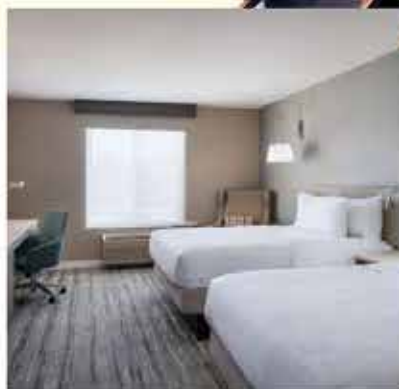


HX
STAL HENDRIX



VitaFlex
PRO

2025 Official Lodging Partner



Special Rate for 2025 Events - \$134.00 + tax

 **Hilton
Garden Inn™**

Hilton
HONORS™

Only 10 Minutes From Lamplight Equestrian Center
King or Double Queen Rooms
Garden Grille Restaurant -Breakfast/Dinner/Bar
Guest Laundry
Indoor Pool and Fitness Center
Complimentary Wi-Fi

**For Reservations Please Call (630) 584-0700
and Mention Lamplight Equestrian Center Code 3249091**

4070 E Main Street - St Charles - IL - 60174
www.hilton.com/en/hotels/chiscgi-hilton-garden-inn-st-charles

SAT #	SUN #	CLASS NAME	DIVISIONS OFFERED	CLASS FEE	W/Q FEE
		*indicates a GAIG/USDF Regional Qualifying class			
301	401	USDF Intro A	JR-YR / AA / Open	\$50	-
302	402	USDF Intro B	JR-YR / AA / Open	\$50	-
303	403	USDF Intro C	JR-YR / AA / Open	\$50	-
304	404	USEF Training Level Test One	JR-YR / AA / Open	\$50	-
305	405	USEF Training Level Test Two	JR-YR / AA / Open	\$50	-
306	406	USEF Training Level Test Three *	JR-YR / AA / Open	\$50	\$70
307	407	USEF First Level Test One	JR-YR / AA / Open	\$50	-
308	408	USEF First Level Test Two	JR-YR / AA / Open	\$50	-
309	409	USEF First Level Test Three *	JR-YR / AA / Open	\$50	\$70
310	410	USEF Second Level Test One	JR-YR / AA / Open	\$50	-
311	411	USEF Second Level Test Two	JR-YR / AA / Open	\$50	-
312	412	USEF Second Level Test Three *	JR-YR / AA / Open	\$50	\$70
313	413	USEF Third Level Test One	JR-YR / AA / Open	\$50	-
314	414	USEF Third Level Test Two	JR-YR / AA / Open	\$50	-
315	415	USEF Third Level Test Three *	JR-YR / AA / Open	\$50	\$70
316	416	USEF Fourth Level Test One	JR-YR / AA / Open	\$50	-
317	417	USEF Fourth Level Test Two	JR-YR / AA / Open	\$50	-
318	418	USEF Fourth Level Test Three *	JR-YR / AA / Open	\$50	\$70
319	419	FEI Prix St Georges *	JR-YR / AA / Open	\$50	\$70
320	420	FEI Intermediare I *	JR-YR / AA / Open	\$50	\$70
321	421	FEI Intermediare II *	JR-YR / AA / Open	\$50	\$70
322	422	FEI Grand Prix *	JR-YR / AA / Open	\$50	\$70
323	423	FEI Grand Prix Special	JR-YR / AA / Open	\$50	-
324	424	USEF TOC	JR-YR / AA / Open	\$50	\$70
		*(specify test - no Freestyles or Young Horse tests)			
325	425	USEF TOC	JR-YR / AA / Open	\$50	\$70
		*(specify test - no Freestyles or Young Horse tests)			
326	426	Equitation – Dressage Seat		\$50	-

Fairfield[®]

BY MARRIOTT



Fairfield Inn & Suites by Marriott has joined as a Lodging Partner for the 2023 HITS Chicago Series at Lamplight Equestrian Center, offering a special rate to HITS Chicago Exhibitors for the remainder of the season. Book your room for the HITS Chicago Series at Fairfield Inn & Suites.



The Fairfield Inn is located less than 8 miles from the show grounds and offers daily complimentary breakfast, indoor pool and whirlpool, fitness center and complimentary Wi-Fi as well as onsite laundry and valet dry cleaning. Countless restaurants, shopping, and activities are all within 2 miles of the hotel. Be sure to mention that you will be showing at Lamplight!

SAT #	SUN #	CLASS NAME	COST
10	20	Fillies of 2025 w/wo Dam - separate Non-compete entry required for non-entered mare. (no class fee for non-entered mare)	\$55
11	21	Fillies of 2024 Yearling	\$55
12	22	Fillies of 2023 Two-year-old	\$55
13	23	Fillies of 2022 Three-year-old	\$55
14	24	Colts/geldings of 2025 w/wo Dam - separate Non-compete entry required for n/e mare. (no class fee for non-entered mare)	\$55
15	25	Colts/geldings of 2024 yearlings	\$55
16	26	Colts/geldings of 2023 two-year-old	\$55
17	27	Colts/geldings of 2022 three-year-old	\$55

CHAMPIONSHIPS

100		Current Year Foal Championship ProElite/ USDFBC Qualifier - open to first & second place from Fillies of 2025 and Colts/geldings of 2025	No Fee
101		Filly Championship ProElite/USDFBC Qualifier - open to first & second place from Fillies 2024, 2023 & 2022 fillies classes	No Fee
102		Colts/Geldings Championship Pro/Elite USDFBC Qualifier - open to first & second place from Colts/Geldings 2024, 2023 & 2022 colts/geldings classes	No Fee

FOUR-YEAR & OLDER

115	215	Four-Year-Old Mare Sport Horse Prospect (not breeding stock)	\$55
116	216	Four-Year-Old Stallion/Gelding Sport Horse Prospect (not breeding stock)	\$55
117		Four-Year-Old Prospect Championship ProElite/ USDFBC Qualifier (open to first & second)	No Fee

BREEDING STOCK

120	220	Four-Year-Old& Older Mare	\$55
121	221	Four-Year-Old& Older Stallion	\$55
122		Mare Championship ProElite/USDFBC Qualifier - first, second & third place from Mare class	No Fee
123		Stallion Championship ProElite/ USDFBC Qualifier - first, second & third place from Stallion class	No Fee

HORSE GROUP CLASSES

160	260	Breeders Goup – Group of 2-3 horses any age/sex, bred by same exhibitor	\$85
165	265	Get of Sire – Group of 2-3 horses any age/sex, same sire	\$85
170	270	Produce of Dam – Group of 2-3 horses any age/sex, same dam	\$85

AMATEUR/ JUNIOR HANDLER

175		Amateur Handler *	\$55
176		Junior Handler *	\$55

MATERIALE CLASSES

180	280	Materiale – three-year-old fillies	\$55
181	281	Materiale – four- and five-year-old mares	\$55
182	282	Materiale – three-year-old colts/geldings	\$55
183	283	Materiale – four- and five-year-old geldings/stallions	\$55

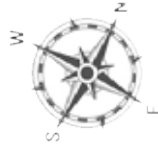
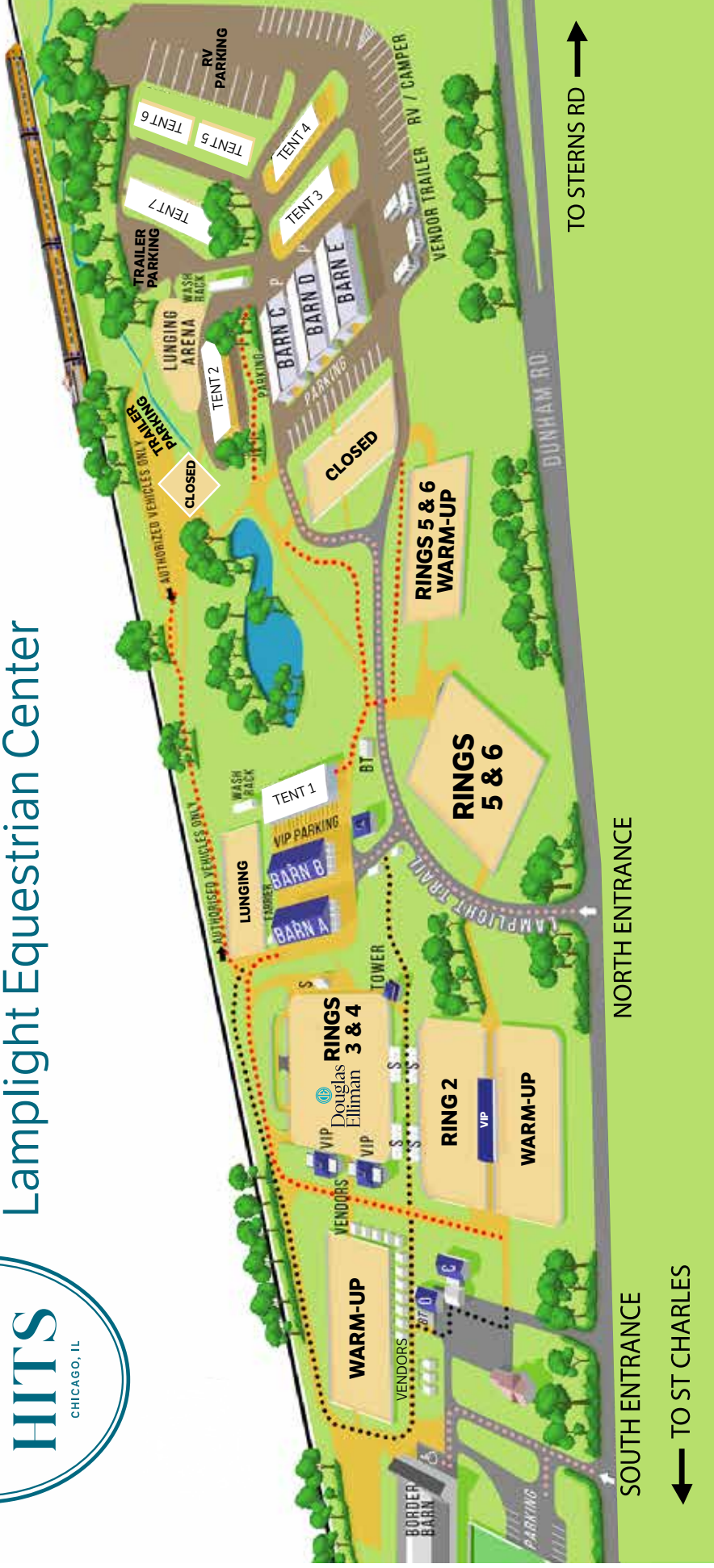
2024 PROELITE/USDF NORTH CENTRAL SERIES FINALS CLASSES (Sunday only – after qualifying classes)

500		2025 ProElite/USDF Breeders North Central Series Current Year Foal Championship Final	\$80
501		2025 ProElite/USDF Breeders North Central Series Fillies Championship Final	\$80
502		2025 ProElite/USDF Breeders North Central Series Colts & Geldings Championship Final	\$80



Chicago Dressage Series

Lamplight Equestrian Center



SAT #	SUN #	CLASS NAME	COST
	503	2025 ProElite/USDF Breeders North Central Series Mare Championship Final	\$80
	504	2025 ProElite/USDF Breeders North Central Series Stallion Championship Final	\$80
	505	2025 ProElite/USDF North Central Series 3-Year-Old Materiale Championship (fillies, colts, geldings)	\$80
	506	2025 ProElite/USDF North Central Series 4-Year-Old Materiale Champion (mares, geldings, stallions)	\$80
	507	2025 ProElite/USDF North Central Series 5-Year-Old Materiale Champion (mares, geldings, stallions)	\$80
	508	2025 ProElite/USDF Breeders North Central Series 4 Year Old Prospect Champion Final	\$80

INDIVIDUAL BREED CLASSES (Saturday only)

810	North American Sport Pony Registry	\$55
811	Halfinger	\$55
812	Welsh Pony & Cob Society	\$55
813	International Andalusian & Lusitano Horse Assn (purebred & half)	\$55
814	ISR-Oldenburg	\$55
815	Thoroughbred (must be registered with the Jockey Club)	\$55
816	North American Danish Warmblood	\$55
817	Trakehner	\$55
818	Oldenburg (GOV)	\$55
819	FHANA	\$55
820	AHA Purebred Arabian	\$55
821	AHS-Hanoverian	\$55
822	KWPN-NA	\$55
823	SWANA	\$55
824	Holsteiner	\$55
825	Belgian Warmblood	\$55
826	RPSI	\$55
827	Quarter Horse AQHA	\$55
828	Westfalen	\$55
829	RID/Irish Sport Horse	\$55
830	Paint Horse APHA	\$55
831	ARS – Rhineland	\$55
832	Morgan	\$55

UNDER SADDLE CLASS

125	Under Saddle – three-year-old fillies **
126	Under Saddle – four- and five-year-old mares **
127	Under Saddle – three-year-old colts/geldings **
128	Under Saddle – four- and five-year-old geldings/stallions **
129	Suitability to become a dressage horse horses must be at least 36 months of age and may not be older than 6 years; they cannot have competed above first level **
130	Under Saddle Championship: open to 1st and 2nd places from classes 125-128 **

* To be shown in-hand by a Jr/YR or an Amateur with a current USEF Amateur card. Open to fillies/mares and gelding in any age group. No stallions or colts except weanlings. To be judged on presentation of the animal to the judge, neatness, and appearance of the handler, overall condition of the animal, handling techniques, appropriate tack and equipment, demonstration of correct training and ability to show horse to the best of its ability.

**Horses will be shown at the walk, trot, and canter both ways of the ring. Judge may ask for lengthening at trot and canter in classes for four year olds. Judging to be weighted 60% movement, 30% conformation, 10% general impression.

Recognizing quality bloodlines and dressage prospects across the nation.



ProElite/USDF Breeders Championship Series



PRESENTING SPONSORS

2 White Feet

KWPN North America

Horses Unlimited

SUPPORTING SPONSORS

American Hanoverian Society

Aspen Leaf Farm

Iron Spring Farm

CONTRIBUTING SPONSORS

U.S. Sport Horse Breeders Association

For information about the
series, locations, and dates visit
www.usdf.org



United States
Dressage
Federation TM



2025 ProElite/USDF Breeders Championship Series Program Rules

The ProElite/USDF Breeders Championship Series (ProElite/USDFBCS) is a program intent on recognizing quality bloodlines and dressage prospects across the nation. Through a combination of in-hand and materiale classes, the ProElite/USDFBCS provides competition opportunities for dressage prospects and breeding stock.

- The ProElite/USDFBCS is scheduled on a calendar year basis. It starts January 1 and ends September 30.
- A series must have a minimum of two qualifying events to host a series final competition.
- Series boundaries are determined by USDF. Please be advised that the boundaries of any given series may cross the regional boundaries established for regular dressage competitions.
- All Dressage Sport Horse Breeding (DSHB) and ProElite/USDFBCS exhibitors and management are responsible for knowing the rules for USEF-licensed/USDF-recognized dressage competitions holding DSHB classes, as well as USEF-licensed/USDF-recognized competitions in general. The USEF Rule Book Dressage Chapter, Subchapter DR-2, contains the DSHB class rules, and can be found at www.usef.org.

I. PROELITE/USDFBCS IN-HAND CHAMPIONSHIP DIVISIONS

DSHB In-Hand classes provide evaluation of conformation and movement of horses of all ages for potential dressage horses and/or breeding stock.

A. IN-HAND CLASSES - HORSE REGISTRATION AND MEMBERSHIP REQUIREMENTS (PROELITE/USDFBCS QUALIFYING OR SERIES FINAL CLASSES)

CHART 1: USDF REQUIREMENTS FOR IN-HAND DIVISIONS	
HORSE	<p>Either USDF Lifetime Horse Registration (LHR) or USDF Horse Identification Number (HID) is required for all horses entered and must be submitted. Horses registered with a breed organization should have a copy of their registration papers submitted directly to USDF.</p> <p>Horses participating in ProElite/USDFBCS qualifying or series final competitions are not required to be registered with any breed registry. For registered horses the name of the breed, sire, dam, damsire, and breeder must be given on the entry blank. Horses not registered with a breed registry should be listed as “unregistered” on entry blank. For unregistered horses competing in DSHB classes, the breeding information is strongly recommended.</p>
OWNER	Owner is not required to be a USDF member for qualifying or series final competitions. If the owner does not have a USDF Participating, Group or Business membership, then a USDF non-member fee will apply.
HANDLER/ ASSISTANT HANDLER	Neither USDF membership nor a USDF non-member fee is required for the handler.
Elimination of a horse from its relevant class or series final class may occur should any USDF non-member, membership or horse registration/HID applications with related fees fail to be paid and/or collected by show management and submitted to USDF at the completion of a competition.	

B. REQUIREMENTS FOR PROELITE/USDFBCS IN-HAND QUALIFYING CLASSES

1. Classes must be offered and judged according to DR209.
2. Neither foals nor horses of any other age may be shown loose.
3. All qualifying competitions must offer every Sport Horse Prospect In-Hand and Breeding Stock In-Hand division of the ProElite/USDFBCS. The divisions are:
 - a. Current Year Foal Championship
 - b. Filly Championship
 - c. Colt/Gelding Championship
 - d. Four-Year-Old Prospect Championship
 - e. Mare Championship (Breeding Stock)
 - f. Stallion Championship (Breeding Stock)

4. Only a single set of Sport Horse Prospect and Breeding Stock In-Hand DSHB qualifying classes may be offered per competition. These classes must be open to all horses and ponies of the appropriate age and sex, and not subject to any entry restriction.
5. A separate qualifier championship class must be held for all divisions, even those that have only one class or one horse in the division. All horses must be re-evaluated by the judge(s) at both the walk and the trot in the championship class per DR210. If any one of the judges adjudicating this class has not previously judged all the horses in this class, conformation must also be reevaluated on every horse.
6. Qualifier championship classes must be open to first and second place winners of their respective In-Hand qualifying classes as listed in Chart 2 below. Organizers have the option of including third placed horses in qualifier championship classes. No scores are given. Ties are not allowed. The champion and reserve champion of each division at each qualifier event are eligible to compete in their respective ProElite/USDFBCS Final championship class. A third-place horse in each championship class must be named as well.
7. Current Year Foals ARE NOT ALLOWED in Filly Championship and Colt/Gelding Championship classes. Fillies of Current Year and Colts/Geldings of Current Year will compete in the same Current Year Foal Championship.
8. Four-Year-Old Prospect mares and Four-Year-Old Prospect stallions/geldings will compete against each other in the same Four-Year-Old Prospect Championship.
9. Mare classes may be divided by age, competition and/or breeding status (as of January 1st of the current competition year), as in the following examples:
 - a. Four-Year-Old & Older Maiden Mares
 - b. Four-Year-Old & Older Yeld Mares
 - c. Four-Year-Old & Older Broodmares
10. Stallion classes may be divided by age, competition and/or breeding status, as in the following examples:
 - a. Four-Year-Old & Older Stallions Showing Only In-Hand
 - b. Four-Year-Old & Older Stallions Showing Also Under Saddle
11. Note the following clarification on “stallion”: No geldings may compete in the ProElite/USDFBCS classes for stallions even if they are gelded after qualifying for the finals and are breeding via frozen semen.
12. Each horse may only enter the ProElite/USDFBCS qualifying class(es) for which it is eligible and may only qualify for the specific ProElite/USDFBCS championship class(es) for that division(s). Four-Year Old Mares & Stallions may show in both the Four-Year Old Prospect class AND their respective Breeding Stock class.
13. Geldings of any age may NOT show in breeding stock classes/categories. Geldings, age four and under, may show ONLY in sport horse prospect classes.
14. All classes must be judged using the correct scoresheet for appropriate category percentages. Sport horse prospects four years old and under MUST be evaluated on the current USDF Dressage Sport Horse Prospect In-Hand scoresheets and mare and stallion breeding stock MUST be evaluated on the current USDF Dressage Sport Horse Breeding Stock scoresheets.
15. During awards ceremonies, each division champion and reserve champion must be named ProElite/USDFBCS qualifying champions and reserve champions for the show and be awarded a qualifier ribbon that is supplied to the show by USDF. Announcements must identify sponsors and horses’ breeding information. If a champion and/or reserve has already qualified for a final, the third-placed horse from the pertinent qualifying championship class will be eligible to compete in a final. Qualifying ribbons are still awarded to the champion and reserve champion, the third-place horse will not receive a qualifier ribbon.
16. Any horse receiving a 75.000% or higher in its age/sex class is eligible to compete in the ProElite/USDFBCS Finals, independent of whether they go forward to a qualifying championship class.
17. A list of qualified horses is maintained on the USDF website.
18. All champions and reserve champions will be eligible to compete in **ANY** ProElite/USDFBCS Final, regardless of where qualification is earned, but may compete in only **one** series final competition per calendar year.

Chart 2: USDF IN-HAND DIVISION CHAMPIONSHIP QUALIFYING PROGRESSION				
Class	Qualifier Championship	Finals Championship	Eligibility	Scoresheet
Current Year Fillies	Current Year Foal Qualifier Championship 1 st & 2 nd Place from age classes move here	ProElite/USDFBCS Final Current Year Foal Championship Champion & Reserve from Qualifier AND any horse scoring 75% or higher in class	current year fillies & colts/geldings	Sport Horse Prospects (In Hand)
Current Year Colts/Geldings				
Yearling Fillies	Filly Qualifier Championship 1 st & 2 nd Place from age classes move here	ProElite/USDFBCS Final Filly Championship Champion & Reserve from Qualifier AND any horse scoring 75% or higher in class	yearling, two-year-old, three-year-old fillies	
Two-Year-Old Fillies				
Three-Year-Old Fillies				
Yearling Colts/Geldings	Colt/Gelding Qualifier Championship 1 st & 2 nd Place from age classes move here	ProElite/USDFBCS Final Colt/Gelding Championship Champion & Reserve from Qualifier AND any horse scoring 75% or higher in class	yearling, two-year-old, three-year-old colts/geldings	
Two-Year-Old Colts/ Geldings				
Three-Year-Old Colts/ Geldings				
Four-Year-Old Mares Sport Horse Prospects	Four-Year-Old Prospect Qualifier Championship 1 st & 2 nd Place from age classes move here	ProElite/USDFBCS Final Four-Year-Old Prospect Championship Champion & Reserve from Qualifier AND any horse scoring 75% or higher in class	four-year-old mares, stallions & geldings	
Four-Year-Old Stallions/ Geldings Sport Horse Prospects				
Four-Year-Old and Older Maiden Mares	Mare Qualifier Championship 1 st & 2 nd Place from respective classes move here	ProElite/USDFBCS Final Mare Championship Champion & Reserve from Qualifier AND any horse scoring 75% or higher in class	four-year-old & older mares	Sport Horse Breeding Stock (In Hand)
Four-Year-Old and Older Yeld Mares				
Four-Year-Old and Older Broodmares				
Four-Year-Old and Older Stallions (showing only in-hand)	Stallion Qualifier Championship 1 st & 2 nd Place from respective classes move here	ProElite/USDFBCS Final Stallion Championship Champion & Reserve from Qualifier AND any horse scoring 75% or higher in class	four-year-old & older stallions	
Four-Year-Old and Older Stallions (showing also under saddle)				

C. CONDUCT OF SERIES FINAL IN-HAND CHAMPIONSHIP CLASSES

- At least two USEF DSHB judges must officiate in each series final class. Placings will be determined by the average of all judges' scores. At least one judge must be a USEF DSHB 'R' judge.
- Ties in series final classes must remain unbroken. Examples:
 - If there are two champions, there is not a reserve champion.
 - If there are two reserve champions, the next place will be 4th place.

3. A grand champion and reserve grand champion for each division will be named at each ProElite/USDFBCS Final event and will receive awards and prizes provided by USDF. Third through sixth place horses will receive ribbons provided by USDF. After the last ProElite/USDFBCS Final held in a competition year, certificates will be available from USDF via the website.
4. USDF reserves the right to change, alter, or retract any placings and/or prizes for up to 60 days after the last day of competition if an error or violation is discovered.
5. Each horse must be shown individually on the triangle at the walk and trot and stand for conformation. Callbacks are permitted only if stated in the prize list or program (DR209).
6. The owner **must enter** the qualified horse in the appropriate ProElite/USDFBCS Final championship class. The horse is NOT automatically entered in the series final championship class because it qualified earlier in the day or at another show. Series final events must allow late entries in series final classes for horses that qualified after the official closing date.
7. Management must collect all USDF non-member, membership and/or horse registration/HID applications and related fees prior to the start of a series final class for eligible entries to compete in the class. Should the required USDF non-member, membership or horse registration/HID applications and related fees fail to be submitted to USDF following the completion of a series final competition, elimination of a horse from its series final class may result.

II. PROELITE/USDFBCS Materiale Championship Division

DSHB Materiale classes provide evaluation of movement and rideability under saddle of three, four, and five-year olds as potential dressage riding horses.

A. MATERIALE CLASSES - HORSE REGISTRATION AND MEMBERSHIP REQUIREMENTS (PROELITE/USDFBCS QUALIFYING OR SERIES FINAL CLASSES)

CHART 3: USDF REQUIREMENTS FOR MATERIALE DIVISIONS	
HORSE	<p>Either USDF Lifetime Horse Registration (LHR) or USDF Horse Identification Number (HID) is required for all horses entered and must be submitted. Horses registered with a breed organization should have a copy of their registration papers submitted directly to USDF.</p> <p>Horses participating in ProElite/USDFBCS qualifying or series final competitions are not required to be registered with any breed registry. For registered horses the name of the breed, sire, dam, damsire, and breeder must be given on the entry blank. Horses not registered with a breed registry should be listed as “unregistered” on entry blank. For unregistered horses competing in DSHB classes, the breeding information is strongly recommended.</p>
OWNER	Owner is not required to be a USDF member for qualifying or series final competitions. If the owner does not have a USDF Participating, Group or Business membership, then a USDF non-member fee will apply.
RIDER	Rider is required to have a current USDF Participating Membership at the time a horse’s qualifying score is earned and at the time of the ProElite/USDFBCS Materiale Championship class.
Elimination of a horse from its relevant class or series final class may occur should any USDF non-member, membership or horse registration/HID applications with related fees fail to be paid and/or collected by show management and submitted to USDF at the completion of a competition.	

B. REQUIREMENTS FOR PROELITE/USDFBCS MATERIALE QUALIFYING CLASSES

1. Classes must be offered and judged according to DR134 & DR204 and the directives on the scoresheet.
2. Dressage Competitions and DSHB Competitions may offer Materiale classes in the following categories:
 - a. Three-year old Fillies Materiale

- b. Three-year old Colts and Geldings Materiale
 - c. Four-year old Mares Materiale
 - d. Four-year old Stallions and Geldings Materiale
 - e. Five-year old Mares Materiale
 - f. Five-year old Stallions and Geldings Materiale
3. Qualifying competitions may combine age groups but not different sexes. Fillies and/or mares may not be combined in classes with colts, geldings and/or stallions except in championship materiale classes (DR204).
 4. Two numbers (min. 3" x 5") must be provided to and worn by Materiale class entries and they must be positioned on each side of the saddle pad.
 5. Scores must be awarded to all competitors competing in materiale classes.
 6. A horse may qualify to compete in a ProElite/USDFBCS Materiale Championship Final by receiving one score of 72.000% or higher in a materiale class held at any USEF-licensed/USDF-recognized DSHB or Dressage competition during the relative competition year.
 7. Scores earned at competitions licensed by USEF as Regular or Local competitions are not eligible to be used as qualifying scores for the ProElite/USDFBCS Materiale Championships.
 8. The ProElite/USDFBCS Materiale Championships will run on the same calendar year as the ProElite/USDFBCS (January 1-September 30). Qualifications to compete in a ProElite/USDFBCS Materiale Championship class must be earned in the calendar year that the championship occurs.
 9. Qualifying scores to compete in a championship class may be earned up until the championship class occurs. Materiale scores earned at dressage competitions held after all ProElite/USDFBCS Finals in a competition year, are not eligible as qualifying scores.
 10. A list of qualified horses is maintained on the USDF website.
 11. A horse may qualify with a different rider than the rider who competes the horse in the championship class.
 12. All qualified horses will be eligible to compete in ANY ProElite/USDFBCS Final, regardless of where qualification is earned, but may compete in only one series final competition per calendar year.

C. CONDUCT OF SERIES FINAL MATERIALE CHAMPIONSHIP CLASSES

1. At least two USEF DSHB judges must officiate in each ProElite/USDFBCS Materiale Championship class. Placings will be determined by the average of all judges' scores. At least one judge must be a USEF DSHB 'R' judge.
2. Series final events must hold materiale classes allowing for qualification opportunities prior to holding the ProElite/USDFBCS Materiale Championship classes.
3. **Two** numbers (min. 3" x 5") must be provided to and worn by Materiale class entries and they must be positioned on each side of the saddle pad.
4. Scores must be awarded to all competitors.
5. Ties in ProElite/USDFBCS Materiale Championship classes must remain unbroken.
6. Materiale Championships will be held at each ProElite/USDFBCS Final competition. All qualified horses regardless of sex will compete against one another in their respective age groups. Each ProElite/USDFBCS Final will hold the following divisions:
 - a. Three-year old Fillies, Colts and Geldings Materiale
 - b. Four-Year-Old Mares, Stallions and Geldings Materiale
 - c. Five-Year-Old Mares, Stallions and Geldings Materiale
7. Horses will be evaluated according to the criteria listed on the current "USDF Materiale Class" scoresheet, and classes must be conducted according to the current USDF "Procedures to Host USDF Materiale Classes".
8. A grand champion and reserve grand champion for each division will be named at each ProElite/USDFBCS final event and will receive awards and prizes provided by USDF. Third through sixth place horses will receive ribbons provided by USDF. After the last ProElite/USDFBCS Final held in a competition year, certificates will be available from USDF via the website.
9. USDF reserves the right to change, alter, or retract any placings and/or prizes for up to 60 days after the last day of the championship if an error or violation is discovered.
10. Owner must enter the qualified horse in the horse's appropriate ProElite/USDFBCS Materiale Championship class prior to commencement of the class. The horse is NOT automatically entered in the class because the horse qualified

earlier in the day or at another show. ProElite/USDFBCS Final events must agree to allow late entries in the ProElite/USDFBCS Materiale Championship classes for horses that qualified for the championship after the official closing date.

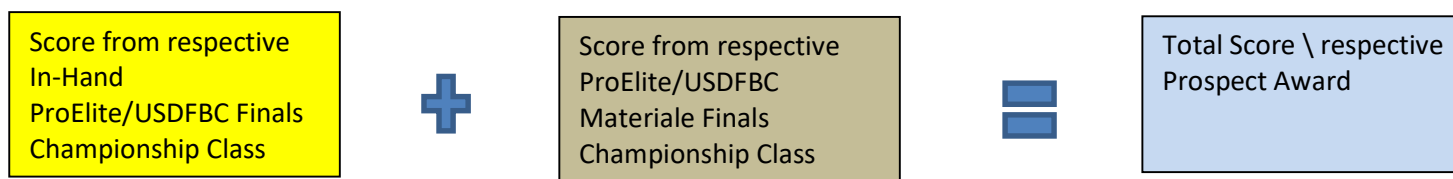
11. Management must collect all USDF non-member, membership and/or horse registration/HID applications and related fees prior to the start of a series final class for eligible entries to compete in the class. Should the required USDF non-member, membership or horse registration/HID applications and related fees fail to be submitted to USDF following the completion of a series final competition, elimination of a horse from its series final class may result.

Chart 4: USDF MATERIALE DIVISION CHAMPIONSHIP QUALIFYING PROGRESSION	
Class	Championship
Three-Year-Old Filly Materiale	ProElite/USDFBCS Final Three-Year-Old Materiale Championship any horse scoring 72% or higher in their respective class
Three-Year-Old Colt/ Gelding Materiale	
Four-Year-Old Mare Materiale	ProElite/USDFBCS Final Four-Year-Old Materiale Championship any horse scoring 72% or higher in their respective class
Four-Year-Old Stallion/Gelding Materiale	
Five-Year-Old Mare Materiale	ProElite/USDFBCS Final Five-Year-Old Materiale Championship any horse scoring 72% or higher in their respective class
Five-Year-Old Stallion/Gelding Materiale	
Current Materiale scoresheets must be used, and scores given to every entry. Qualifying competitions may combine age groups but not different sexes. Fillies and/or mares may not be combined in classes with colts, geldings and/or stallions except in championship materiale classes.	

III. PROELITE/USDFBCS FINALS PROSPECT AWARDS

At each ProElite/USDFBCS Final, a Three-Year-Old Prospect Award and a Four-Year-Old Prospect Award will be presented to the Three-Year-Old and Four-Year-Old horses earning the highest combined scores from their respective in-hand and materiale series final championship classes. USDF will provide each ProElite/USDFBCS Finals with the prizes for the Three-Year-Old Prospect and Four-Year-Old Prospect Awards that must be presented to the winners at each competition.

Prospect Award Calculation



USDF Horse Welfare Statement

As those engaged in equestrian sport, we are committed to ensuring our horses receive the best possible care to the best of our ability. We acknowledge that we are the caretakers of our horses and as such we are committed to always, without exception, treating our horses with dignity, fairness, kindness, and understanding.

We realize that horses, whether in a herd or as an individual, will communicate contentment, fear, pain and confusion in the only way they can, which often takes the form of physical reactions that can be misinterpreted and misunderstood.

Therefore, we believe it is our obligation to seek to understand our horses with the goal of providing care and training methods that are never the manifestation of anger, frustration or cruelty. We are committed to these principles at all times, whether on or off the show grounds.

We are committed to humane treatment and application of these principles on behalf of all animals including but not limited to horses, donkeys, mules, companion animals, and pets. Lack of humane treatment, whether the result of actions taken, or by care withheld, will not be tolerated.

United States Dressage Federation
4051 Iron Works Parkway, Lexington, KY 40511
Phone: 859-971-2277, Fax: 859-971-7722, usdressage@usdf.org, www.usdf.org

Revised 4/2025



UNITED STATES DRESSAGE FEDERATION™

Regional Adult Amateur Equitation Program

The USDF Regional Adult Amateur Equitation Program recognizes adult amateurs competing in equitation and promotes correct seat, position, and use of the aids in dressage. An Adult Amateur Equitation Regional Final class presented by Big Dee's Tack and Vet Supply will be held in conjunction with each of the nine USDF Regional Dressage Championship competitions, providing adult amateurs with additional opportunity for recognition. Ribbons awarded through 8th Place and gift certificates awarded to top four riders.

Adult amateurs wishing to qualify to compete in an Adult Amateur Equitation Regional Final may do so by meeting the following requirements.

Qualifying Requirements

To be eligible for the USDF Adult Amateur Equitation Regional Final class, rider must have

- a) Earned a score of 70% or higher in any dressage seat equitation class (except walk/trot) at a USEF-licensed/USDF-recognized Dressage competition within the qualifying period of the applicable regional championship.

or

- b) Qualified to compete in any regional dressage championship class (excluding freestyles).

Membership Requirements

- Rider must have a USDF Participating Membership at the time the qualifying score is earned, and at the time of the Regional Final class.
- Rider must be an adult amateur, in accordance with GR1306 of the USEF rules, and be designated with USEF as an adult amateur when the score is earned, and at the time of the Regional Final class.
- Owner must have a USDF Participating or Business Membership when the qualifying score is earned, and at the time of the Regional Final class.
- Horse must have a USDF Lifetime Horse Registration when the qualifying score is earned, and at the time of the Regional Final class.

The USDF Regional Adult Amateur Equitation Program rules and information can be found on the USDF [website](http://www.usdf.org).

Page 2 of 2

COURTYARD[®]

BY MARRIOTT



OUR
PASSION IS
TO HELP
YOU
FOLLOW
YOURS



Courtyard Chicago St. Charles
700 Courtyard Drive
St. Charles, IL 60174
630-377-6370

COURTYARD[®]
BY MARRIOTT





VACCINATION RECORD: EQUINE INFLUENZA AND EQUINE HERPES

UNITED STATES EQUESTRIAN FEDERATION

Owner Name: _____

Horse Name: _____

This form may be used to for documenting Equine Influenza and Equine Herpes Virus (Rhinopneumonitis) vaccinations as defined in USEF GR845.

Date (Day/Month/Year)	Place and Country	Vaccine			Name, Signature, and/or Stamp of Veterinarian
		Name	Batch	Route Mode	



WAIVER AND RELEASE OF LIABILITY, ASSUMPTION OF RISK AND INDEMNITY AGREEMENT

For and in consideration of United States Equestrian Federation, Inc. dba US Equestrian ("USEF") allowing me, the undersigned, to participate in any capacity (including as a rider, driver, handler, vaulter, longeur, lessee, owner, agent, coach, official, trainer or volunteer) in a USEF sanctioned, licensed or approved event or activity, including but not limited to equestrian clinics, practices, shows, competitions and related or incidental activities and ("USEF Event" or "USEF Events"); I, for myself, and on behalf of my spouse, children, heirs and next of kin, and any legal and personal representatives, executors, administrators, successors,, and assigns, hereby agree to and make the following contractual representations pursuant to this Agreement (the "**Agreement**"):

A. RULES AND REGULATIONS: I hereby agree that I have read, understand, and agree to be bound by all applicable Federation Bylaws, rules, and policies including the USEF Safe Sport Policy and Minor Athlete Abuse Prevention Policies (MAAPP) as published at www.usef.org, as amended from time to time.

B. ACKNOWLEDGMENT OF RISK: I knowingly, willingly, and voluntarily acknowledge the inherent risks associated with the sport of equestrian and know that horseback riding and related equestrian activities are inherently dangerous, and that participation in any USEF Event involves risks and dangers including, without limitation, the potential for serious bodily injury (including broken bones, head or neck injuries), sickness and disease (including communicable diseases), trauma, pain & suffering, permanent disability, paralysis and death; loss of or damage to personal property (including my mount & equipment) arising out of the unpredictable behavior of horses; exposure to extreme conditions and circumstances; accidents involving other participants, event staff, volunteers or spectators; contact or collision with other participants and horses, natural or manmade objects; adverse weather conditions; facilities issues and premises conditions; failure of protective equipment (including helmets); inadequate safety measures; participants of varying skill levels; situations beyond the immediate control of the USEF Event organizers and competition management; and other undefined, not readily foreseeable and presently unknown risks and dangers ("**Risks**").

EQUINE ACTIVITY LIABILITY ACT WARNING:

CAUTION: HORSEBACK RIDING AND EQUINE ACTIVITIES CAN BE DANGEROUS. RIDE AT YOUR OWN RISK.

Under the laws of most States, an equine activity sponsor or equine professional is not liable for any injury to, or the death of, a participant in equine activities resulting from the inherent risks of equine activities.

C. ASSUMPTION OF RISK: I understand that the aforementioned Risks may be caused in whole or in part or result directly or indirectly from the negligence of my own actions or inactions, the actions or inactions of others participating in the USEF Events, or the negligent acts or omissions of the Released Parties defined below, and I hereby voluntarily and knowingly assume all such Risks and responsibility for any damages, liabilities, losses, or expenses that I incur as a result of my participation in any USEF Events. I also agree to be responsible for any injury or damage caused by me, my horse, my employees or contractors under my direction and control at any USEF Event.

D. WAIVER AND RELEASE OF LIABILITY, HOLD HARMLESS AND INDEMNITY: In conjunction with my participation in any USEF Event, I hereby release, waive and covenant not to sue, and further agree to indemnify, defend and hold harmless the following parties: USEF, USEF Recognized Affiliate Associations, the United States Olympic & Paralympic Committee (USOPC), USEF clubs, members, Event participants (including athletes/riders, coaches, trainers, judges/officials, and other personnel), the Event owner, licensee, and competition managers; the promoters, sponsors, or advertisers of any USEF Event; any charity or other beneficiary which may benefit from the USEF Event; the owners, managers, or lessors of any facilities or premises where a USEF Event may be held; and all directors, officers, employees, agents, contractors, and volunteers of any of the aforementioned parties (**Individually and Collectively, the "Released Parties" or "Event Organizers"**), with respect to any liability, claim(s), demand(s), cause(s) of action, damage(s), loss, or expense (including court costs and reasonable attorney fees) of any kind or nature ("**Liability**") which may arise out of, result from, or relate in any way to my participation in the USEF Events, including claims for Liability caused in whole or in part by the negligent acts or omissions of the Released Parties.

E. COMPLETE AGREEMENT AND SEVERABILITY CLAUSE: This Agreement represents the complete understanding between the parties regarding these issues and no oral representations, statements or inducements have been made apart from this Agreement. If any provision of this Agreement is held to be unlawful, void, or for any reason unenforceable, then that provision shall be deemed severable from this Agreement and shall not affect the validity and enforceability of any remaining provisions.

I HAVE CAREFULLY READ THIS DOCUMENT IN ITS ENTIRETY, UNDERSTAND ALL OF ITS TERMS AND CONDITIONS, AND KNOW IT CONTAINS AN ASSUMPTION OF RISK, RELEASE AND WAIVER FROM LIABILITY, AS WELL AS A HOLD HARMLESS AND INDEMNIFICATION OBLIGATIONS.

By signing below, I (as the participant or as the Parent/Legal Guardian of the minor identified below) hereby accept and agree to the terms and conditions of this Agreement in connection with my (or the minor's) participation in any USEF Event. If, despite this Agreement, I, or anyone on my behalf or the minor's behalf, makes a claim for Liability against any of the Released Parties, I will indemnify, defend and hold harmless each of the Released Parties from any such Liabilities as the result of such claim.

The parties agree that this agreement may be electronically signed. The parties agree that the electronic signatures appearing on this agreement are the same as handwritten signatures for the purposes of validity, enforceability, and admissibility.

☐ RIDER/DRIVER/HANDLER/VAULTER/LONGEUR ☐ OWNER ☐ TRAINER ☐ OFFICIAL ☐ STAFF ☐ VOLUNTEER ☐ COACH (IF APPLICABLE)

Signature: _____ Date: _____ Print Name: _____

Parent/Guardian Signature: (Required if Rider/Driver/Handler/Vaulter/Longeur is a minor) _____ Date: _____

Print Parent//Guardian Name: _____ Emergency Contact Phone No. _____



FEDERATION ENTRY AGREEMENT

By entering a Federation-licensed Competition and signing this entry blank as the Owner, Lessee, Trainer, Manager, Agent, Coach, Driver, Rider, Handler, Vaulteur or Longeur and on behalf of myself and my principals, representatives, employees and agents, I agree that I am subject to the Bylaws and Rules of the United States Equestrian Federation, Inc. (the "Federation") and the local rules of _____ (Competition). I agree to be bound by the Bylaws and Rules of the Federation and of the competition. I will accept as final the decision of the Hearing Committee on any question arising under the Rules, and agree to release and hold harmless the competition, the Federation, their officials, directors and employees for any action taken under the Rules. I represent that I am eligible to enter and/or participate under the Rules, and every horse I am entering is eligible as entered. I also agree that as a condition of and in consideration of acceptance of entry, the Federation and/or the Competition may use or assign photographs, videos, audios, cable - casts, broadcasts, internet, film, new media or other likenesses of me and my horse taken during the course of the competition for the promotion, coverage or benefit of the competition, sport, or the Federation. Those likenesses shall not be used to advertise a product and they may not be used in such a way as to jeopardize amateur status. I hereby expressly and irrevocably waive and release any rights in connection with such use, including any claim to compensation, invasion of privacy, right of publicity, or to misappropriation. The construction and application of Federation rules are governed by the laws of the State of New York, and any action instituted against the Federation must be filed in New York State. See GR908.4.

If not currently a USEF Active Competing member or Subscriber, I acknowledge that I will be enrolled for no cost as a USEF Fan and my USEF Fan Account will continue to annually automatically renew in USEF's sole discretion. Additionally, I acknowledge that the benefits of a USEF Fan are subject to change without notice. USEF may in its sole discretion, at any time, terminate my USEF Fan status. I acknowledge that I may opt out at any time by going to My USEF Dashboard or calling (859) 810-8733.

BY SIGNING BELOW, I AGREE that I have read, understand, and agree to be bound by all applicable Federation Bylaws, rules, and policies including the USEF Safe Sport Policy and Minor Athlete Abuse Prevention Policies (MAAPP) as published at www.usef.org, as amended from time to time, as well as all terms and provisions of this Prize List. If I am signing and submitting this Agreement electronically, I acknowledge that my electronic signature shall have the same validity, force and effect as if I affixed my signature by my own hand.

RIDER/DRIVER/HANDLER/VAULTER/LONGEUR (mandatory)

Signature: _____

Print Name: _____

TRAINER (mandatory)

Signature: _____

Print Name: _____

OWNER/AGENT (mandatory)

Signature: _____

Print Name: _____

COACH (if applicable)

Signature: _____

Print Name: _____

Parent/Guardian Signature: (Required if Rider/Driver/Handler/Vaulteur/Longeur is a minor) _____

Print Parent//Guardian Name: _____ Emergency Contact Phone No. _____

Is Rider/Driver/Vaulteur a U.S. Citizen: ☐ Yes ☐ No

2025

Official Use Only
BRIDLE #

COMPETITION NAME _____ COMPETITION DATES _____

NAME OF HORSE		PREVIOUS NAME (IF ANY)		USEF#	USDF#	FOR SALE
BREED	SEX	HEIGHT	COLOR	COGGINS DATE (ENCLOSED COPY)	SIRE	DAM
DAM'S SIRE	COUNTRY OF BIRTH	YEAR OF BIRTH	BREEDER	FEI/PASSPORT #	MICROCHIP #	

RIDER/HANDLER _____

USEF# _____ USDF# _____ FEI/LOCAL# _____

ADDRESS _____

CITY/ST/ZIP _____

CELL PHONE _____ JR/YOUNG RIDER BIRTHDAY _____

EMAIL ADDRESS _____

RIDER CITIZENSHIP (IF NOT USA) _____

RIDER STATUS (CIRCLE ONE): JR/YG ☐ AA ☐ OPEN ☐

OWNER _____

USEF# _____ USDF# _____ LOCAL# _____

ADDRESS _____

CITY/ST/ZIP _____

CELL PHONE _____

EMAIL ADDRESS _____

OWNER CITIZENSHIP (IF NOT USA) _____

TRAINER _____

USEF# _____ USDF# _____ LOCAL# _____

ADDRESS _____

CITY/ST/ZIP _____

CELL PHONE _____

EMAIL ADDRESS _____

COACH _____

USEF# _____ USDF# _____ LOCAL# _____

ADDRESS _____

CITY/ST/ZIP _____

Please complete all three pages. Reverse MUST be SIGNED.

CLASS NO.	DIVISION	CLASS DESCRIPTION	QUAL Y/N	FEES

SUBTOTAL CLASS FEES AND QUALIFYING FEES	0
USDF NON MEMBER FEE \$55 PER NON-MEMBER	
OFFICE FEE AND/OR BRIDLE # FEE	
USEF HORSE FEES \$8 USEF FEE + \$15 DRUG FEE = \$23.00	
CDI HORSE FEES \$8 USEF FEE + \$25 DRUG FEE = \$33.00	
IHP DISCIPLINE FEE (\$35 IF REQUIRED)	
STABLING FEES 0 STALL @ \$0 /STALL	
TACK STALLS 0 STALL @ \$0 /STALL	0
BEDDING 0 BALES @ \$0 /BALE	0
NON COMPETING HORSE FEE	0
SPONSORSHIP	
GROUND'S FEE OR OTHER FEES	
OTHER	
LATE/CHANGE/BANK CHARGES FOR CC	
TOTAL FEES	0

Stabling Information & Special Requests: Please list only ONE name (either individual or barn) for entire group (so we can get everyone together)

Group/Self	Tue	Wed	Thu	Fri	Sat	Sun	Mon
Stalls							
Tack Stalls							

Stable Group: _____ Contact: _____



United States Dressage Federation TM

OPPORTUNITIES FOR 3-6 YEAR OLD HORSES **COMPETING IN MATERIALE AND/OR** **USEF/FEI YOUNG HORSE TESTS**

	3 YEAR OLD	4 YEAR OLD	5 YEAR OLD	6 YEAR OLD
ADEQUAN®/YEAR-END AWARDS*				
Materiale Horse of the Year Award (min. 3 scores required)	X	X	X	
USEF Four-Year-Old Award (min. 4 scores required)^		X		
FEI Five-Year-Old Award (min. 4 scores required)^			X	
FEI Six-Year-Old Award (min. 4 scores required)^				X
ProElite/BREEDERS CHAMPIONSHIP SERIES**				
Materiale Championships (min. 1 score required of 72% or higher)				
Three-Year-Old Championship	X			
Four-Year-Old Championship		X		
Five-Year-Old Championship			X	

For Adequan®/USDF Year-End Awards - at the time scores are earned

- * Horse must have a USDF Lifetime Horse Registration Number (LHR)
- * Owner must have a USDF Participating (PM) or Business Membership (BM)
- * Rider must have a USDF PM
- * Competition year starts October 1 and ends September 30

For ProElite/USDF Breeders Championship Series - to compete in the championships

- ** Horse must have a USDF Horse Identification Number or LHR
- ** Owner must have a USDF Group Membership, PM, BM or pay a non-member fee per competition
- ** Rider must have a USDF PM
- ** Competition year starts January 1 and ends September 30

^Scores earned in the USEF Four- and FEI Five- & Six-Year-Old tests are also eligible to be used towards a USDF Horse Performance Certificate

^^ Horses competing in the ProElite/USDF Breeders Championship Series Final Three-or Four-Year-Old Materiale Championships may also be eligible for the Prospect awards

Complete Award/Championship Requirements Listed in the current *USDF Member Guide*

Revised 02/12/24

ATTENTION COMPETITORS

Each competitor is responsible for supplying management with correct applicable numbers (USDF and USEF) for horse, owner, rider, and trainer, before the day(s) of the competition.

The scores of competitors who fail to supply correct numbers may not be counted toward national awards.

YOU ARE NOT ALONE

A white silhouette of a person riding a horse is positioned in front of the word 'YOU' in the title 'YOU ARE NOT ALONE'.

US Equestrian wants you to know: if you are a victim or survivor of sexual abuse or suspect abuse of any kind, there are resources and people to help.

REPORT

833-5US-SAFE or uscenterforsafesport.org/report-a-concern

24/7 HELPLINE

866-200-0796 or visit safesporthepline.org

TRAINING & RESOURCES

Free to US Equestrian members at usef.org/safesport.

#youarenotalone





2026 Great American Insurance Group/USDF Regional Dressage Championships

A single Regional Dressage Championship program organized by the United States Dressage Federation (USDF), and recognized by the United States Equestrian Federation, Inc. (USEF), will be held in each of the nine USDF regions. In addition, Alaska and Hawaii may each hold state championships if an official request from a Group Member Organization (GMO) is received by April 1 of the prior year. The Regional Championship Program Rules can be found on the USDF website at www.usdf.org. Please refer to the 2026 USDF Member Guide for the comprehensive list of rules and requirements for this program.

Membership/Registration Requirements for Qualifying and Championships

All memberships and registrations/recordings must be correct and current at the time qualifying scores are earned and at the time of the championships.

Rider:

- Must have a USDF Participating* Membership (PM).
- Must have a USEF membership (Active or Life).

Horse:

- Must have a USDF Lifetime Horse Registration (LHR).
- Must have a USEF (Annual or Lifetime) Horse Recording.
- USDF horse registration and USEF horse recording must be in the name(s) of the current owner(s) or lessee(s).
A horse is not required to have breed registry papers.
- Horses must be entered in qualifying and championship classes under their official recorded names and ownership as specified in USEF GR1102.3, and transfers of ownership or lease registrations must be completed in compliance with USEF rules GR1105 and GR1108 prior to the competition in order for the horse to compete under the name of the new owner or lessee. (USEF DR127.2)

Owner:

- Must have a USDF Participating or Business Membership and a USEF membership (Active or Life Membership or Annual Recorded Farm/Business (with Senior Active Competing Farm Owner in good standing)). If the horse has more than one owner, at least one owner must have both active USEF membership and active USDF Participating or Business Membership and must be the owner of record with USEF and USDF. For a business or farm to be the valid owner under this requirement, it must be listed as an owner of the horse with both USEF and USDF.

* PMs are USDF members who join USDF directly. USDF Group Members (GM) are ineligible.

Minimum Qualifying Scores: One set of nationally-standardized qualifying scores has been established for all USEF/USDF Regional Championships, for Training Level through Grand Prix, in three divisions: open, adult amateur and junior/young rider.

The minimum percentages are as follows:

	OPEN	AA	JR/YR
Training Level (Test 3)	68%	63%	63%
First Level (Test 3)	66%	62%	62%
Second Level (Test 3)	64%	61%	61%
Third Level (Test 3)	62%	60%	60%
Fourth Level (Test 3)	62%	60%	60%
Prix St. Georges	62%	60%	60%
Intermediate I	62%	60%	60%
Intermediate II	62%	60%	60%
Grand Prix	60%	60%	60%
FREESTYLE	OPEN/Jr/YR	AA	
First Level	65%	65%	
Second Level	65%	65%	
Third Level	65%	65%	
Fourth Level	65%	65%	
Intermediate I	65%	65%	
Grand Prix	65%	65%	

USDF Membership Benefits: USDF is dedicated to education, the recognition of achievement, and promotion of dressage. For details on member benefits, including educational programs, awards, and other opportunities, refer to the *USDF Member Guide* or the USDF website at www.usdf.org.

**This
competition
is recognized
by USDF
for 2025**

Membership Requirements for USEF-licensed/USDF-recognized Competitions: Owners and riders, including foreign riders and owners who are not residents of the US, wishing to participate in a USEF-licensed/USDF-recognized competition as a rider or owner/lessee, must have either a USDF Group Membership (GM), Participating Membership (PM), or have a USDF Non-Member (NM) identification number and pay the USDF Non-Member (NM) fee. (Note: USDF Business Members can own horses but cannot compete as riders with their USDF Business Membership.)

Horses competing at USEF-licensed/USDF-recognized competitions must have either a USDF Horse Identification (HID) number or a USDF Lifetime Horse Registration (LHR). Proper credentials or verification certificates must be presented to the competition secretary.

Riders and owners wishing to participate in a USEF-licensed/USDF-recognized competition, and not able to present the competition secretary with verification of a USDF membership or NM identification, and USDF LHR or USDF HID, must complete a USDF Competition Affidavit Form and pay the \$5 affidavit filing fee. A copy of a completed affidavit form from another competition may also be used for verification purposes for up to 60 days. (Exception: Affidavits cannot be used at Great American Insurance Group/USDF Regional Dressage Championships.)

Exceptions:

- Horses competing only in Individual Breed Classes (IBCs) at DSHB competitions, sires and dams of horses in DSHB group classes, where those sires or dams are not actually competing in the same competition, horses competing only in breed restricted dressage or DSHB classes at Regular Competitions (e.g. all Arabian, all Friesian, or all Morgan classes), or in USDF Introductory Level tests, pas de deux or quadrille, are exempt from this requirement. Also exempt are horses ridden in leadline, exhibitions, games and races, classes for 4-H members, walk-trot, academy, and opportunity classes.
- Riders and owners/lessees competing only in classes which are exempt from the USDF HID requirements are also exempt from the USDF NM identification number and NM fee requirements. Also exempt are handlers of horses competing in DSHB In-Hand or Group classes.

Memberships Defined

Participating Membership (PM): A membership issued to an individual directly by USDF. The membership year is December 1 through November 30. PMs are available for 1-year (\$100), 5-years (\$400), or life (\$2,000). A USDF Youth Participating Membership (YPM) is available for individuals who have not reached their 21st birthday by December 1 of the current membership year (\$80). A PM allows the member to compete at USEF-licensed/USDF-recognized competitions and to participate as a rider and/or owner/lessee for all Adequan®/USDF Year-End Awards and the Great American Insurance Group/USDF Regional Dressage Championship program.

Group Membership (GM): A membership issued to an individual by USDF when the member name and dues are submitted to USDF through an affiliate Group Member Organization (GMO). The GM year begins December 1 and ends November 30. A GM allows the member to compete at USEF-licensed/USDF-recognized competitions and participate in the USDF Rider Awards Program.

Business Membership (BM): A membership that runs December 1 through November 30 and is issued to a business or organization directly by USDF. The USDF BM (\$280) offers a wider variety of advertising benefits. BMs satisfy requirements of horse ownership only.

Non-Member (NM) Identification Number: For each USDF NM owner/lessee and USDF NM rider there will be a USDF NM fee of \$55 per competition that must be collected by the show secretary and submitted to USDF, along with the USDF Report of Fees document and the \$5 affidavit fee and Competition Affidavit Form if the person cannot provide a copy of their USDF NM card. Owners/lessees or riders exempt from the NM number requirements are also exempt from paying the USDF NM fee. If there are multiple owners of a horse and all are NMs, only one of the owners must pay the NM fee. If the horse has at least one owner who is a current USDF PM, GM, or BM there is no NM fee assessed. Competition management will be invoiced for all applicable USDF NM fees not received with the USDF post-competition paperwork, along with a report listing all USDF NMs. Competition management is then required to submit the NM fees within 30 days to the USDF. An individual with a USDF NM identification number is not eligible for any USDF membership benefits. Once a USDF NM number has been assigned, a USDF NM card can be obtained from the USDF website.

Horse Identification (HID) Number: A one-time tracking number for horses (\$45). Scores earned by a horse with an HID number will be recorded but will NOT be counted towards Adequan®/USDF Year-End Awards. A horse with an HID number is not eligible to compete in Great American Insurance Group/USDF Regional qualifying or championship classes. An HID number can be upgraded to a Lifetime Horse Registration (LHR) for a fee of \$95. If a horse has a USDF LHR it does not need an HID number. An HID number is a one-time fee that does not need to be renewed.

Lifetime Horse Registration (LHR): A horse with an LHR (\$140) is eligible for Adequan®/USDF Year-End Awards, and eligible to compete in Great American Insurance Group/USDF Regional qualifying and championship classes, assuming requirements for the owner and rider are met. If a horse has an LHR it does not need an HID number. An LHR does not need to be renewed.

How to Join USDF

Applications for USDF Participating Membership (PM), Business Membership (BM), Horse Identification (HID) number, and Lifetime Horse Registration (LHR) may be found in the following locations:

- On the USDF website: www.usdf.org. You can submit the application online or download the form.
- In the show office at USEF-licensed/USDF-recognized competitions classified by USEF as Dressage Competitions, and Regular Competitions which are open to all breeds.
- By calling or writing the USDF office at (859) 971-2277, 4051 Iron Works Parkway, Lexington, KY 40511

The effective date of membership is the date the form and correct fees are received in the USDF office or, if applying at a competition, the date accepted by the competition secretary, provided the application is signed and dated by the competition secretary, member, and/or horse owner on that same day.



HITS

ENJOY THE PREMIER HITS EXPERIENCE FROM COAST TO COAST, with six iconic venues, elite competition opportunities, generous prize money offerings, and unique hospitality. From the dazzling hunters and incredible jumpers to the captivating dressage movements, HITS hosts more than 130 weeks of hunter/jumper and dressage competitions throughout the year.



THE ACTION-PACKED HUNTER/JUMPER HORSE SHOW SCHEDULE IN 2025 across HITS Chicago, HITS Culpeper, HITS Del Mar, HITS Hudson Valley, HITS Ocala, and HITS Vermont includes seven weeks of International FEI show jumping competition, as well as five weeks with a World Champion Hunter Rider (WCHR) designation.

Plus, exhibitor-favorite classes exclusive to HITS, such as the STX Open Speed Series, Horseflight Jumper Classic Series, Arion Sellier Equitation Championships, and the ClipMyHorse.tv qualifiers toward the 2025 \$200,000 ClipMyHorse.tv Hunter Classic Final, make HITS the place to be all year long.

HITS OCALA
POST TIME FARM

December to March

HITS CULPEPER
COMMONWEALTH PARK

April to September

HITS CHICAGO
LAMPLIGHT
EQUESTRIAN CENTER
May to September

HITS SAUGERTIES
HITS-ON-THE-HUDSON

May to October

HITS VERMONT
HAROLD BEEBE FARM

July to August

HITS DEL MAR
DEL MAR HORSE PARK

April to August

THIS IS MORE THAN A HORSE SHOW, **THIS IS HITS!**

THE
LEAGUE presented by
**MARSHALL
+ STERLING**



MAAPP

MINOR ATHLETE ABUSE PREVENTION

LEARN ABOUT MAAP POLICIES



Safe Sport Training



Local Travel



One-On-One Interactions



Social Media & Electronic Communications



Read about these & more at usef.org/MAAPP

REPORT MAAP POLICY VIOLATIONS



usef.org/safe-sport/reporting

859-225-6915 or Text Anonymously 855-682-8733



HITS

DRESSAGE RIDERS CAN STRUT DOWN CENTERLINE WITH EXCITING COMPETITION

at HITS Chicago, HITS Del Mar, HITS Hudson Valley, and new in 2025, HITS Culpeper. Highlighted by three CDI weeks at HITS Del Mar, the U.S. Dressage Festival of Champions at HITS Chicago, and the Great American Insurance Group/United States Dressage Federation Region 8 Dressage Championship at HITS Hudson Valley, these popular series offer classes for horses and riders of all levels.



HITS CULPEPER
COMMONWEALTH PARK

June 20-22

HITS CHICAGO
LAMPLIGHT EQUESTRIAN CENTER

May to August

HITS SAUGERTIES
HITS-ON-THE-HUDSON

May to September

HITS DEL MAR
DEL MAR HORSE PARK

February to October