



# HITS CHICAGO

## DRESSAGE AT LAMPLIGHT AUGUST



**HITS**

HITS, LLC. | 151 Stockade Dr., Kingston, NY 12401  
845.246.8833 | [info@HITSShows.com](mailto:info@HITSShows.com) | [HITSShows.com](http://HITSShows.com)

# YOUR CONNECTION TO DRESSAGE

EDUCATION • COMPETITION • ACHIEVEMENT

© John Borys Photography



[www.usdf.org](http://www.usdf.org)



United States  
**Dressage**  
Federation™



# HITS

CHICAGO, IL

Official Prize List for

**Lamplight August Dressage I** – August 21-23, 2025

**Lamplight August Dressage II** – August 24, 2025

Licensed by the United States Equestrian Federation

USEF/USDF Recognition Numbers: 130 / 316826 Level Three Competitions

Lamplight Equestrian Center, Wayne, IL

**Opening Date:** Thursday, July 24, 2025

**Received By/Closing Date:** Friday, August 8, 2025



**Official Qualifying Competitions**

- 2026 FEI North American Youth Championship
- 2026 USEF Children Dressage National Championship
- 2026 USEF Pony Rider Dressage National Championship
- 2026 USEF Junior Dressage National Championship
- 2026 USEF Young Rider Dressage National Championship
- 2026 USEF Brentina Cup Dressage National Championship
- 2026 USEF Intermediaire I Dressage National Championship
- 2026 USEF Para Dressage National Championships
- 2026 Great American/USDF Regional Championships

---

## JUDGES

Beverly Rogers, AZ (S), others TBD

---

## TECHNICAL DELEGATE

Dianne Stanley, FL (R)

---

## STAFF

<b>SHOW MANAGER</b>	Monica Fitzgerald	
<b>SECRETARY:</b>	Debbie Landon	507.208.6022 DebbieLandon3@aol.com
<b>CO-SHOW SECRETARY</b>	Kathy Mucha	Kathy@HITSShows.com
<b>VETERINARIAN</b>	Dr. Marshall Stevens, Stevens Equine <i>on grounds during show hours</i>	616.560.2518
<b>FARRIER</b>	Archie Linn <i>on grounds during show hours</i>	815.378.2766
<b>SHOW PHOTOGRAPHER</b>	Andrew Ryback Photography	224.318.5455 info@AndrewRyback.com
<b>EMT</b>	<i>on grounds during show hours</i>	

---

## OFFICIAL PRIZE LIST POSTED HITSSHOWS.COM

---

<b>ONLINE ENTRIES</b>	Available on Equestrian-hub.com on opening date <b>(NOTE This is a new online entry system this year)</b>
<b>MAILED ENTRIES</b>	Draw checks in US Funds only payable to HITS. Check or charge card (charge card ran at show) must accompany mailed entry. No entries accepted without payment.
<b>MAIL TO</b>	<b>Lamplight Dressage</b> c/o Debbie Landon - Show Secretary 4420 57th ST NW, Rochester, MN 55901
<b>REMINDER</b>	This is two shows, so you must submit TWO entry forms if entering both shows. Payment required with entry.
<b>ENTRY INFORMATION REQUIREMENT</b>	Competitors are responsible to include all USDF and USEF memberships for horse, owner, rider, trainer, and coach listed on entry or pay non-member fees. Freestyle classes must include a copy of qualifying test with entry.





**dever**<sup>®</sup>  
INC.  
GOLF CAR SALES & RENTALS



PROUDLY SERVING THE EQUINE INDUSTRY FOR OVER  
30 YEARS, **dever** GOLF CARS CAN FULFILL ALL OF  
YOUR **SALES, SERVICE, AND RENTAL** NEEDS!

FOR ALL YOUR SALES AND  
RENTAL NEEDS, VISIT

**WWW.DEVERINC.COM**

OR TO RESERVE YOUR  
RENTAL BY PHONE, CALL

**859-455-9586**

(OPTION 4 FOR RESERVATIONS)

**RESERVE EARLY  
TO GUARANTEE  
AVAILABILITY!**



---

## ENTRY FEES

---

OFFICE FEE	\$55 per horse/rider combination per show.
CLASS FEE	See class list on page 9.
VILLAGE OF WAYNE TAX	\$12.50 tax per competing horse – payable only once per weekend.
LATE ENTRY FEE	\$50 per show if postmarked and received after the Received By/Closing Date of Friday, August 8th.
INCOMPLETE ENTRY FEE	\$20 per entry.
POST ENTRIES AT SHOW	Will be taken as scheduling permits, class fee plus \$10.00 (must request by 3 PM the day prior).
EMAILED ENTRIES	\$10 per entry.
CHARGE CARD FEE	A fee of 3% will be charged on all credit card transactions.
RIDER/HORSE CHANGE FEE	\$25 for either rider or horse change after entries submitted.
NON-COMPETE HORSE FEE	\$100 for the weekend. Must fill out entry form for bridle number and pay office fee.

---

## STABLING FEES

---

STABLING/TACK STALL FEE	Permanent and Temporary stalls are 10' x 10' with doors.
WEEKEND STABLING	12 PM Wednesday to 7 PM Sunday) - \$300/stall
DAILY STABLING	(12 PM to 7 PM the following day) - \$100/stall
ADDITIONAL NIGHTS STABLING	\$50/stall - per night (other than show dates)
BEDDING	\$12/bag. Order on entry form or at show office. No initial bedding will be supplied. minimum of 4 bags required. Competitors not ordering 4 shavings will be charged a disposal fee per stall.
OR PAY DISPOSAL FEE	\$45/stall. Competitors not ordering 4 shavings will be charged a disposal fee per stall.
RV HOOKUP	\$350/weekend or \$100/night (includes water and electrical hookup). Indicate on entry either 30 or 50 amps. Septic pump-outs can be arranged in the show office for an additional charge.

---

## RULES & REGULATIONS

---

**USEF Equine Vaccination Rule & Health Requirements for entry to show grounds in 2025:** All horses entering the showgrounds of a USEF licensed competition MUST be accompanied by documentation showing vaccinations for Equine Influenza Virus (Flu) and Equine Herpes Virus (Rhinopneumonitis) within 6 months of the show dates. This is mandatory for every horse entry. See USEF rule GR844. Horses must also have a current negative EIA/Coggins test within 12 months of the show dates. A health certificate (30-day) is needed on all out of state horses. Horses not entered in the show may not be brought onto the show grounds without prior arrangement with show management.

**Entry Cancellation/Refunds:** Cancellations accepted only in writing by mail or e-mail prior to or on the closing date. Entire entry refunded minus the office fee. No refunds of any kind for any reason, including Act of God, will be given after the closing date or throughout the competition. All fees collected on behalf of USEF and USDF to be submitted to the Federation provided all outstanding fees are paid in full; else it will be applied to those fees. All entries are accepted with this understanding.

**Great American Insurance Group (GAIG)/USDF Qualifying Classes:** Indicate that the class is to count for qualifying by placing a Q after the class number on your entry. Qualifying does not require a separate ride. An exhibitor riding in the Open, AA, or JR/YR classes must pay an additional \$20 USDF qualifying fee to have this score entered in the GAIG/USDF qualifying division at that level.

**Confirmation/Ride Times:** Confirmation of entry will be emailed. All email addresses must be clearly printed. Ride times and show updates will be posted on [Equestrian-hub.com](http://Equestrian-hub.com). Entries taken on a first come, first served basis. Entries may close early if time limits for judges are filled. Remaining entries received before the received by date will be placed on a wait list.

**Address:** Lamplight Equestrian Center, 6N940 Dunham Road, Wayne IL, 60184

**Directions: From E, NE, and NW:** I-90: Exit Hwy 59. From Hwy 59: Stearns Road west. Turn south on Dunham Road and right on Lamplight Trail (show entrance).

**Directions: From SE and SW:** I-88, exit Fairview N which turns into Dunham Rd, Lamplight Trail (show entrance) on the left.

**Hotels:** The following hotels are the official lodging partners of Lamplight Equestrian Center: Holiday Inn Express 630-587-6564, Hilton Garden Inn 630 584-0700, and Fairfield Inn 630-845-5500.

**Awards for USEF Classes:** Divisions (JR/YR, AA, Open) may be run concurrently as one class. Divisions will be pinned separately. Riders must clearly specify division choice. When no designation is made, riders will automatically be entered as Open. Riders may enter only one division per class. Ribbons to sixth place for each class, prize for first place if three or more in division. No awards for Qualifying classes. Ribbons can be picked up in the show office at the conclusion of each class.

**Pony Riders/ Pony Measurements:** If you do not have a measurement card done on your pony, you must notify management in advance of the show start of any ponies needing a measurement so a time can be arranged for this service. Management will arrange a measurement time with the veterinarian and technical delegate. It will be the pony owner's responsibility for the fee charged by the veterinarian. This must be done prior to your first pony test ride.

**Arenas:** Outdoor arenas have all-weather GGT mix sand/fiber footing. Warm-up arenas are of same footing. All tests in standard arena, unless entries warrant, then some tests may be held in a short arena. Lunging in separate designated area only.

**Concessions:** Food and concessions will be available on the show grounds during competition hours.

**Warning:** Under the Equine Activity Liability Act, each participant who participates in an equine activity expressly assumes the risks of engaging in and legal responsibility for injury, loss, or damage to person or property resulting from the risk of equine activities.

**Weather/Acts of God/Accidents or Emergency Policy:** Management reserves the right to cancel any classes due to hazardous weather, acts of God, accidents, or emergencies. Every effort will be made to reschedule with priority given to the USEF program classes. No refunds for cancellations due to hazardous weather, acts of God, accidents, or emergencies. See USEF rule GR311.

**Golf Cars/Mopeds/other Motorized Vehicles:** Minors who do not have a valid driver's license which allows them to operate a motorized vehicle in the state in which they reside will not be permitted to operate a motorized vehicle of any kind, including, but not limited to, golf carts, motorcycles, scooters, or farm utility vehicles, on the competition grounds of licensed competitions. Minors who have a valid temporary license may operate the above described motorized vehicles as long as they are accompanied by an adult with a valid driver's license. The parent/legal guardian or individual who signs the entry blank as a parent or guardian of a minor operating a motorized vehicle in violation of this rule are solely responsible for any damages, claims, losses or actions resulting from that operation. Violations of this rule will be cause for penalties against those responsible for the child committing the offense. Wheelchairs and other mobility assistance devices for individuals with disabilities are exempt from this rule.

The unsafe use of personal electronic transport devices, as determined by the competition officials and management in their sole discretion, that do not require a driver's license to operate, including but not limited to segways, hover boards, and single wheeled scooters is prohibited on competition grounds. Operating such devices in areas where people gather may be deemed "unsafe use" if there is a risk of harm to others. If the operator of the device is a minor, the parent/legal guardian or individual who signs the entry blank as a parent or guardian of a minor operating the device in violation of this rule is accountable and may be subject to penalties.

Wheelchairs and other mobility assistance devices for individuals with disabilities are exempt from this rule. **See USEF rule GR 1301.7.**

**Amateur (AA) Classes:** Individuals possessing current amateur certification are only eligible as Adult Amateurs (AA) from the beginning of the calendar year in which they reach age 22. Only active United States Equestrian Federation (USEF) members may obtain amateur status. (Exception: Equine Canada members in possession of current EC membership may sign for USEF Amateur status on a show by show basis at no cost). Participants must possess current USEF Amateur status and qualify under the USEF Amateur rules. If opportunity classes at Dressage Competitions are restricted to AA, riders are required to have an amateur status with USEF.

**Junior/Young Rider Classes (JR/YR):** Riders are eligible to compete in these classes until the end of the calendar year in which they reach the age of 21.

**Pony Division:** For this competition, classes are offered from USEF Training Level through USEF Third level with classes designated for JR/YR, Adult Amateur (AA), and Open riders.

- The pony division is open to all breeds that meets the following measurement requirements. In the Dressage Division, a pony is an animal that does not exceed 148 cm (14.23 hh) without shoes, and 149 cm (14.27 hh) with shoes. The pony can be of any sex (mare, stallion, or gelding).
- Ponies under the age of eight and in possession of a valid temporary card from another division or discipline should submit a copy with their entry.
- Measurement will be required for these pony specific classes if they do not currently have a valid measurement card.
- Measurement will be yearly beginning from the age of three (36 months) until the pony has reached the age of eight years. Animals three through seven years old will be issued an annual Temporary Certificate of Measurement and must be re measured annually until the age of eight years. Animals eight years and older will be issued Standard Certificates of Measurement which will not need to be renewed. Measurement must be done on USEF Combined Driving and Dressage Pony Measurement form.
- Individual responsible for presenting the pony for measurement must be 18 years old. Animals submitted for measurement or re measurement must show no evidence of lameness, and must be jogged for soundness prior to the measurement. Animals showing evidence of lameness are not eligible for measurement or re measurement.
- The pony must be entered to compete at the competition for a measurement to take place.
- When the competition veterinarian is on call and an alternative measurement time is necessary, management must receive a written request for measurement from the owner or agent at least five days prior to the start of competition to set up a time.

**Classes per Day:** Horses are limited to a maximum of three Dressage rides per day at Fourth Level and below (including Rider Tests) or two Dressage rides per day above Fourth Level. Horses competing at both Fourth Level and Prix St. Georges, or their equivalents, are limited to two Dressage rides per day. Dressage Seat Equitation, Quadrille, Pas de Deux and Materiale classes are excluded from the maximum limit of rides per day and horses in these classes may compete at any level for which they are otherwise eligible during the same competition.

**Consecutive Levels:** Horses may enter no more than two consecutive levels, Freestyle levels included, at any one competition.

**See the "General Regulations and Entry Specification Section" for additional policies this show subscribes to and follows.**



# Thank You!

## SPONSORS

### DIAMOND SPONSORS



### GOLD SPONSORS



### SILVER SPONSORS

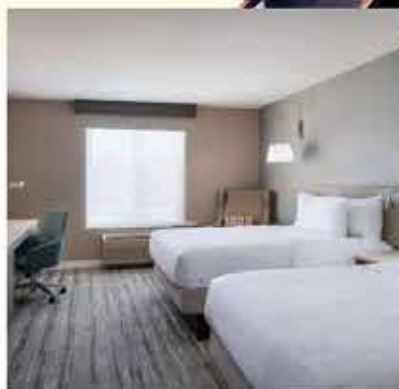


Premier





# 2025 Official Lodging Partner



**Special Rate for 2025 Events - \$134.00 + tax**

 **Hilton  
Garden Inn™**

**Hilton**  
HONORS™

Only 10 Minutes From Lamplight Equestrian Center  
King or Double Queen Rooms  
Garden Grille Restaurant -Breakfast/Dinner/Bar  
Guest Laundry  
Indoor Pool and Fitness Center  
Complimentary Wi-Fi

**For Reservations Please Call (630) 584-0700  
and Mention Lamplight Equestrian Center Code 3249091**

4070 E Main Street - St Charles - IL - 60174  
[www.hilton.com/en/hotels/chiscgi-hilton-garden-inn-st-charles](http://www.hilton.com/en/hotels/chiscgi-hilton-garden-inn-st-charles)



## 2025 August Dressage at Lamplight I & II Class List

Thu #	Fri #	Sat #	Sun #	Class Name * indicates a GAIG/USDF Regional Qualifying class	Divisions Offered	Class Fee	With Q Fee
1	101	201	301	USDF Intro A	JR-YR / AA / Open	\$50	
2	102	202	302	USDF Intro B	JR-YR / AA / Open	\$50	
3	103	203	303	USDF Intro C	JR-YR / AA / Open	\$50	
4	104	204	304	USEF Training Level Test One	JR-YR / AA / Open	\$50	
5	105	205	305	USEF Training Level Test Two	JR-YR / AA / Open	\$50	
6	106	206	306	USEF Training Level Test Three *	JR-YR / AA / Open	\$50	\$70
7	107	207	307	USEF First Level Test One	JR-YR / AA / Open	\$50	
8	108	208	308	USEF First Level Test Two	JR-YR / AA / Open	\$50	
9	109	209	309	USEF First Level Test Three *	JR-YR / AA / Open	\$50	\$70
10	110	210	310	USEF Second Level Test One	JR-YR / AA / Open	\$50	
11	111	211	311	USEF Second Level Test Two	JR-YR / AA / Open	\$50	
12	112	212	312	USEF Second Level Test Three *	JR-YR / AA / Open	\$50	\$70
13	113	213	313	USEF Third Level Test One	JR-YR / AA / Open	\$50	
14	114	214	314	USEF Third Level Test Two	JR-YR / AA / Open	\$50	
15	115	215	315	USEF Third Level Test Three *	JR-YR / AA / Open	\$50	\$70
16	116	216	316	USEF Fourth Level Test One	JR-YR / AA / Open	\$50	
17	117	217	317	USEF Fourth Level Test Two	JR-YR / AA / Open	\$50	
18	118	218	318	USEF Fourth Level Test Three *	JR-YR / AA / Open	\$50	\$70
19	119	219	319	FEI Prix St Georges *	JR-YR / AA / Open	\$50	\$70
20	120	220	320	FEI Intermediare I *	JR-YR / AA / Open	\$50	\$70
21	121	221	321	FEI Intermediare II *	JR-YR / AA / Open	\$50	\$70
22	122	222	322	FEI Grand Prix *	JR-YR / AA / Open	\$50	\$70
23	123	223	323	FEI Grand Prix Special	JR-YR / AA / Open	\$50	
24	124	224	324	USDF Freestyle TOC * (specify test, USDF TR to 4th) Training is not eligible for qualifying.	JR-YR / AA / Open	\$50	\$70
25	125	225	325	FEI Freestyle TOC * (specify test, Intermediare or GP)	JR-YR / AA / Open	\$50	\$70
26	126	226	326	FEI TOC * (state test, no Freestyles, Young Horse, or Para)	JR-YR / AA / Open	\$50	\$70
27	127	227	327	USEF TOC * (state test– no Freestyles, Young Horse, or Para)	JR-YR / AA / Open	\$50	\$70
28	128	228	328	Equitation – Dressage Seat		\$50	
				<b>Materiale Classes</b>			
38	138	238	338	Three Year Old Fillies		\$50	
39	139	239	339	Three Year Old Colts/Geldings		\$50	
40	140	240	340	Four/Five Year Old Mares		\$50	
41	141	241	341	Four/Five Year Old Stallions/Geldings		\$50	

Note: Classes may not necessarily run in the order listed here.

# Fairfield<sup>®</sup>

## BY MARRIOTT



Fairfield Inn & Suites by Marriott has joined as a Lodging Partner for the 2023 HITS Chicago Series at Lamplight Equestrian Center, offering a special rate to HITS Chicago Exhibitors for the remainder of the season. Book your room for the HITS Chicago Series at Fairfield Inn & Suites.



The Fairfield Inn is located less than 8 miles from the show grounds and offers daily complimentary breakfast, indoor pool and whirlpool, fitness center and complimentary Wi-Fi as well as onsite laundry and valet dry cleaning. Countless restaurants, shopping, and activities are all within 2 miles of the hotel. Be sure to mention that you will be showing at Lamplight!

## 2025 August Dressage at Lamplight I & II Class List

Sat #	Sun #	Class Name * indicates a GAIG/USDF Regional Qualifying class	Class Fee	With Q Fee
		<b>2026 NAYC / USEF Qualifying Classes</b>		
260EF		FEI Pony Team (USEF Qualifying)	\$70	
	360EF	FEI Pony Individual (USEF Qualifying)	\$70	
261EF		FEI Junior Team (NAYC / USEF Qualifying) *	\$70	\$90
	361EF	FEI Junior Individual (NAYC / USEF Qualifying)	\$70	
262EF		FEI Young Rider Team (NAYC / USEF Qualifying) *	\$70	\$90
	362EF	FEI Young Rider Individual (NAYC / USEF Qualifying)	\$70	
263EF		FEI Children Team (NAYC / USEF Qualifying)	\$70	
	363EF	FEI Children Individual (NAYC / USEF Qualifying)	\$70	
264EF		FEI Intermediate II (NAYC / USEF Qualifying) *	\$70	\$90
	364EF	FEI Grand Prix 16–25 (NAYC / USEF Qualifying)	\$70	
265EF		FEI Prix St. Georges (USEF Qualifying) *	\$70	\$90
	365EF	FEI Intermediate I (USEF Qualifying) *	\$70	\$90
266EF		FEI Para Dressage Intermediate Test A TOC (USEF Qualifying)	\$70	
	366EF	FEI Para Dressage Intermediate Test B TOC (USEF Qualifying)	\$70	
267EF		FEI Para Dressage Intermediate Freestyle TOC (USEF	\$70	
268EF		FEI Para Dressage Grand Prix Test A TOC (USEF Qualifying)	\$70	
	367EF	FEI Para Dressage Grand Prix Test B TOC (USEF Qualifying)	\$70	
269EF		FEI Para Dressage Grand Prix Freestyle TOC (USEF Qualifying)	\$70	

Note: Classes may not necessarily run in the order listed here.



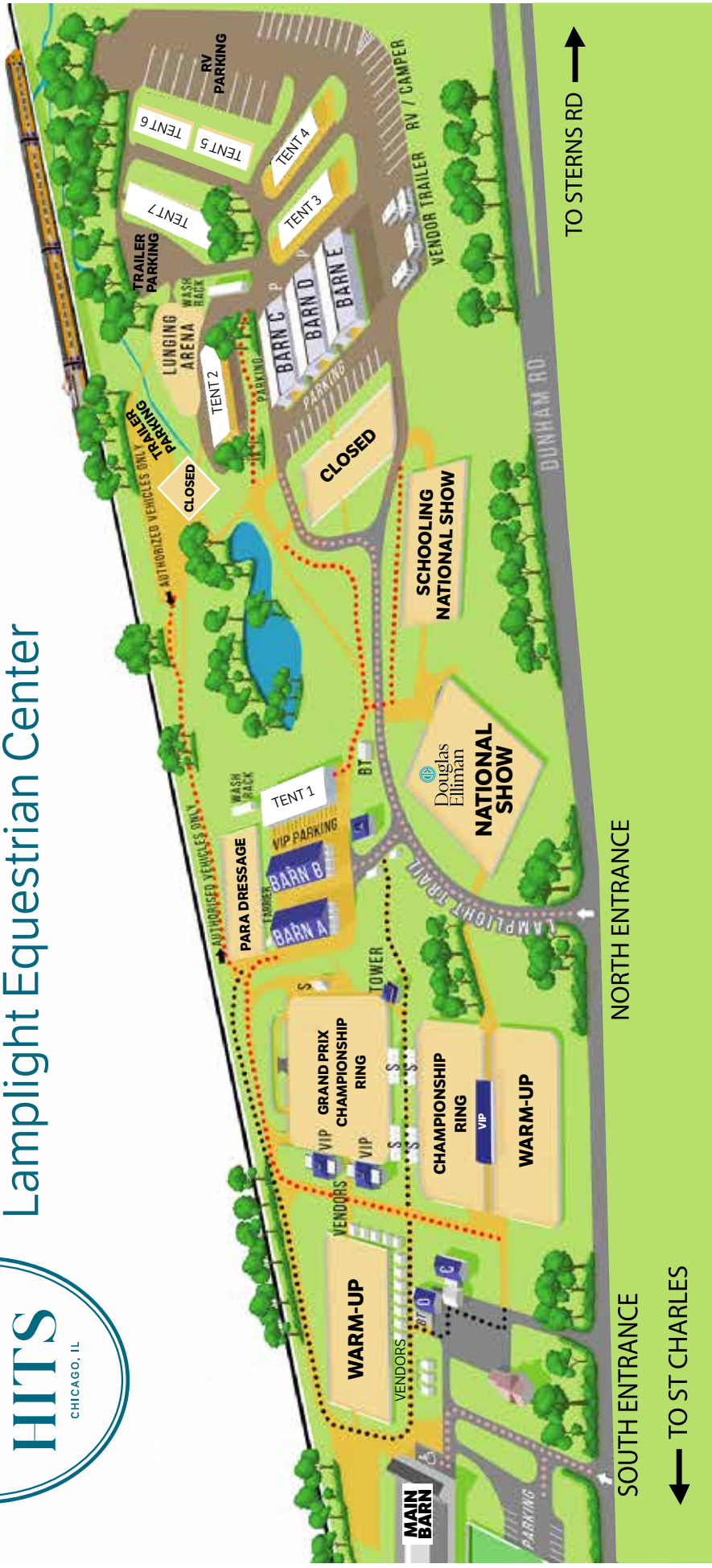
# HITS





# Chicago Dressage Series

## Lamplight Equestrian Center



# USDF Horse Welfare Statement

As those engaged in equestrian sport, we are committed to ensuring our horses receive the best possible care to the best of our ability. We acknowledge that we are the caretakers of our horses and as such we are committed to always, without exception, treating our horses with dignity, fairness, kindness, and understanding.

We realize that horses, whether in a herd or as an individual, will communicate contentment, fear, pain and confusion in the only way they can, which often takes the form of physical reactions that can be misinterpreted and misunderstood.

Therefore, we believe it is our obligation to seek to understand our horses with the goal of providing care and training methods that are never the manifestation of anger, frustration or cruelty. We are committed to these principles at all times, whether on or off the show grounds.

We are committed to humane treatment and application of these principles on behalf of all animals including but not limited to horses, donkeys, mules, companion animals, and pets. Lack of humane treatment, whether the result of actions taken, or by care withheld, will not be tolerated.

United States Dressage Federation  
4051 Iron Works Parkway, Lexington, KY 40511  
Phone: 859-971-2277, Fax: 859-971-7722, [usdressage@usdf.org](mailto:usdressage@usdf.org), [www.usdf.org](http://www.usdf.org)

Revised 4/2025



## UNITED STATES DRESSAGE FEDERATION™

### Regional Adult Amateur Equitation Program

The USDF Regional Adult Amateur Equitation Program recognizes adult amateurs competing in equitation and promotes correct seat, position, and use of the aids in dressage. An Adult Amateur Equitation Regional Final class presented by Big Dee's Tack and Vet Supply will be held in conjunction with each of the nine USDF Regional Dressage Championship competitions, providing adult amateurs with additional opportunity for recognition. Ribbons awarded through 8<sup>th</sup> Place and gift certificates awarded to top four riders.

Adult amateurs wishing to qualify to compete in an Adult Amateur Equitation Regional Final may do so by meeting the following requirements.

#### Qualifying Requirements

To be eligible for the USDF Adult Amateur Equitation Regional Final class, rider must have

- Earned a score of 70% or higher in any dressage seat equitation class (except walk/trot) at a USEF-licensed/USDF-recognized Dressage competition within the qualifying period of the applicable regional championship.

or

- Qualified to compete in any regional dressage championship class (excluding freestyles).

#### Membership Requirements

- Rider must have a USDF Participating Membership at the time the qualifying score is earned, and at the time of the Regional Final class.
- Rider must be an adult amateur, in accordance with GR1306 of the USEF rules, and be designated with USEF as an adult amateur when the score is earned, and at the time of the Regional Final class.
- Owner must have a USDF Participating or Business Membership when the qualifying score is earned, and at the time of the Regional Final class.
- Horse must have a USDF Lifetime Horse Registration when the qualifying score is earned, and at the time of the Regional Final class.

The USDF Regional Adult Amateur Equitation Program rules and information can be found on the USDF [website](http://www.usdf.org).

Page 2 of 2



# COURTYARD<sup>®</sup>

BY MARRIOTT



OUR  
PASSION IS  
TO HELP  
YOU  
FOLLOW  
YOURS



Courtyard Chicago St. Charles  
700 Courtyard Drive  
St. Charles, IL 60174  
630-377-6370

COURTYARD<sup>®</sup>  
BY MARRIOTT





2025

Official Use Only  
BRIDLE #

COMPETITION NAME \_\_\_\_\_ COMPETITION DATES \_\_\_\_\_

NAME OF HORSE		PREVIOUS NAME (IF ANY)		USEF#	USDF#	FOR SALE
BREED	SEX	HEIGHT	COLOR	COGGINS DATE (ENCLOSED COPY)	SIRE	DAM
DAM'S SIRE	COUNTRY OF BIRTH	YEAR OF BIRTH	BREEDER	FEI/PASSPORT #	MICROCHIP #	

RIDER/HANDLER \_\_\_\_\_

USEF# \_\_\_\_\_ USDF# \_\_\_\_\_ FEI/LOCAL# \_\_\_\_\_

ADDRESS \_\_\_\_\_

CITY/ST/ZIP \_\_\_\_\_

CELL PHONE \_\_\_\_\_ JR/YOUNG RIDER BIRTHDAY \_\_\_\_\_

EMAIL ADDRESS \_\_\_\_\_

RIDER CITIZENSHIP (IF NOT USA) \_\_\_\_\_

RIDER STATUS (CIRCLE ONE): JR/YG ☐ AA ☐ OPEN ☐

OWNER \_\_\_\_\_

USEF# \_\_\_\_\_ USDF# \_\_\_\_\_ LOCAL# \_\_\_\_\_

ADDRESS \_\_\_\_\_

CITY/ST/ZIP \_\_\_\_\_

CELL PHONE \_\_\_\_\_

EMAIL ADDRESS \_\_\_\_\_

OWNER CITIZENSHIP (IF NOT USA) \_\_\_\_\_

TRAINER \_\_\_\_\_

USEF# \_\_\_\_\_ USDF# \_\_\_\_\_ LOCAL# \_\_\_\_\_

ADDRESS \_\_\_\_\_

CITY/ST/ZIP \_\_\_\_\_

CELL PHONE \_\_\_\_\_

EMAIL ADDRESS \_\_\_\_\_

COACH \_\_\_\_\_

USEF# \_\_\_\_\_ USDF# \_\_\_\_\_ LOCAL# \_\_\_\_\_

ADDRESS \_\_\_\_\_

CITY/ST/ZIP \_\_\_\_\_

Please complete all three pages. Reverse MUST be SIGNED.

CLASS NO.	DIVISION	CLASS DESCRIPTION	QUAL Y/N	FEES

SUBTOTAL CLASS FEES AND QUALIFYING FEES	0
USDF NON MEMBER FEE \$55 PER NON-MEMBER	
OFFICE FEE AND/OR BRIDLE # FEE	
USEF HORSE FEES \$8 USEF FEE + \$15 DRUG FEE = \$23.00	
CDI HORSE FEES \$8 USEF FEE + \$25 DRUG FEE = \$33.00	
IHP DISCIPLINE FEE (\$35 IF REQUIRED)	
STABLING FEES 0 STALL @ \$0 /STALL	
TACK STALLS 0 STALL @ \$0 /STALL	0
BEDDING 0 BALES @ \$0 /BALE	0
NON COMPETING HORSE FEE	0
SPONSORSHIP	
GROUND'S FEE OR OTHER FEES	
OTHER	
LATE/CHANGE/BANK CHARGES FOR CC	
<b>TOTAL FEES</b>	<b>0</b>

Stabling Information &amp; Special Requests: Please list only ONE name (either individual or barn) for entire group (so we can get everyone together)

Group/Self	Tue	Wed	Thu	Fri	Sat	Sun	Mon
Stalls							
Tack Stalls							

Stable Group: \_\_\_\_\_ Contact: \_\_\_\_\_



# FEDERATION ENTRY AGREEMENT

By entering a Federation-licensed Competition and signing this entry blank as the Owner, Lessee, Trainer, Manager, Agent, Coach, Driver, Rider, Handler, Vaulteur or Longeur and on behalf of myself and my principals, representatives, employees and agents, I agree that I am subject to the Bylaws and Rules of the United States Equestrian Federation, Inc. (the "Federation") and the local rules of \_\_\_\_\_ (Competition). I agree to be bound by the Bylaws and Rules of the Federation and of the competition. I will accept as final the decision of the Hearing Committee on any question arising under the Rules, and agree to release and hold harmless the competition, the Federation, their officials, directors and employees for any action taken under the Rules. I represent that I am eligible to enter and/or participate under the Rules, and every horse I am entering is eligible as entered. I also agree that as a condition of and in consideration of acceptance of entry, the Federation and/or the Competition may use or assign photographs, videos, audios, cable - casts, broadcasts, internet, film, new media or other likenesses of me and my horse taken during the course of the competition for the promotion, coverage or benefit of the competition, sport, or the Federation. Those likenesses shall not be used to advertise a product and they may not be used in such a way as to jeopardize amateur status. I hereby expressly and irrevocably waive and release any rights in connection with such use, including any claim to compensation, invasion of privacy, right of publicity, or to misappropriation. The construction and application of Federation rules are governed by the laws of the State of New York, and any action instituted against the Federation must be filed in New York State. See GR908.4.

If not currently a USEF Active Competing member or Subscriber, I acknowledge that I will be enrolled for no cost as a USEF Fan and my USEF Fan Account will continue to annually automatically renew in USEF's sole discretion. Additionally, I acknowledge that the benefits of a USEF Fan are subject to change without notice. USEF may in its sole discretion, at any time, terminate my USEF Fan status. I acknowledge that I may opt out at any time by going to My USEF Dashboard or calling (859) 810-8733.

**BY SIGNING BELOW, I AGREE** that I have read, understand, and agree to be bound by all applicable Federation Bylaws, rules, and policies including the USEF Safe Sport Policy and Minor Athlete Abuse Prevention Policies (MAAPP) as published at [www.usef.org](http://www.usef.org), as amended from time to time, as well as all terms and provisions of this Prize List. If I am signing and submitting this Agreement electronically, I acknowledge that my electronic signature shall have the same validity, force and effect as if I affixed my signature by my own hand.

**RIDER/DRIVER/HANDLER/VAULTER/LONGEUR** (mandatory)

Signature: \_\_\_\_\_

Print Name: \_\_\_\_\_

**TRAINER** (mandatory)

Signature: \_\_\_\_\_

Print Name: \_\_\_\_\_

**OWNER/AGENT** (mandatory)

Signature: \_\_\_\_\_

Print Name: \_\_\_\_\_

**COACH** (if applicable)

Signature: \_\_\_\_\_

Print Name: \_\_\_\_\_

Parent/Guardian Signature: (Required if Rider/Driver/Handler/Vaulteur/Longeur is a minor) \_\_\_\_\_

Print Parent//Guardian Name: \_\_\_\_\_ Emergency Contact Phone No. \_\_\_\_\_

Is Rider/Driver/Vaulteur a U.S. Citizen: ☐ Yes ☐ No



## WAIVER AND RELEASE OF LIABILITY, ASSUMPTION OF RISK AND INDEMNITY AGREEMENT

For and in consideration of United States Equestrian Federation, Inc. dba US Equestrian ("USEF") allowing me, the undersigned, to participate in any capacity (including as a rider, driver, handler, vaulter, longeur, lessee, owner, agent, coach, official, trainer or volunteer) in a USEF sanctioned, licensed or approved event or activity, including but not limited to equestrian clinics, practices, shows, competitions and related or incidental activities and ("USEF Event" or "USEF Events"); I, for myself, and on behalf of my spouse, children, heirs and next of kin, and any legal and personal representatives, executors, administrators, successors,, and assigns, hereby agree to and make the following contractual representations pursuant to this Agreement (the "**Agreement**"):

A. RULES AND REGULATIONS: I hereby agree that I have read, understand, and agree to be bound by all applicable Federation Bylaws, rules, and policies including the USEF Safe Sport Policy and Minor Athlete Abuse Prevention Policies (MAAPP) as published at [www.usef.org](http://www.usef.org), as amended from time to time.

B. ACKNOWLEDGMENT OF RISK: I knowingly, willingly, and voluntarily acknowledge the inherent risks associated with the sport of equestrian and know that horseback riding and related equestrian activities are inherently dangerous, and that participation in any USEF Event involves risks and dangers including, without limitation, the potential for serious bodily injury (including broken bones, head or neck injuries), sickness and disease (including communicable diseases), trauma, pain & suffering, permanent disability, paralysis and death; loss of or damage to personal property (including my mount & equipment) arising out of the unpredictable behavior of horses; exposure to extreme conditions and circumstances; accidents involving other participants, event staff, volunteers or spectators; contact or collision with other participants and horses, natural or manmade objects; adverse weather conditions; facilities issues and premises conditions; failure of protective equipment (including helmets); inadequate safety measures; participants of varying skill levels; situations beyond the immediate control of the USEF Event organizers and competition management; and other undefined, not readily foreseeable and presently unknown risks and dangers ("**Risks**").

### EQUINE ACTIVITY LIABILITY ACT WARNING:

CAUTION: HORSEBACK RIDING AND EQUINE ACTIVITIES CAN BE DANGEROUS. RIDE AT YOUR OWN RISK.

**Under the laws of most States, an equine activity sponsor or equine professional is not liable for any injury to, or the death of, a participant in equine activities resulting from the inherent risks of equine activities.**

C. ASSUMPTION OF RISK: I understand that the aforementioned Risks may be caused in whole or in part or result directly or indirectly from the negligence of my own actions or inactions, the actions or inactions of others participating in the USEF Events, or the negligent acts or omissions of the Released Parties defined below, and I hereby voluntarily and knowingly assume all such Risks and responsibility for any damages, liabilities, losses, or expenses that I incur as a result of my participation in any USEF Events. I also agree to be responsible for any injury or damage caused by me, my horse, my employees or contractors under my direction and control at any USEF Event.

D. WAIVER AND RELEASE OF LIABILITY, HOLD HARMLESS AND INDEMNITY: In conjunction with my participation in any USEF Event, I hereby release, waive and covenant not to sue, and further agree to indemnify, defend and hold harmless the following parties: USEF, USEF Recognized Affiliate Associations, the United States Olympic & Paralympic Committee (USOPC), USEF clubs, members, Event participants (including athletes/riders, coaches, trainers, judges/officials, and other personnel), the Event owner, licensee, and competition managers; the promoters, sponsors, or advertisers of any USEF Event; any charity or other beneficiary which may benefit from the USEF Event; the owners, managers, or lessors of any facilities or premises where a USEF Event may be held; and all directors, officers, employees, agents, contractors, and volunteers of any of the aforementioned parties (**Individually and Collectively, the "Released Parties" or "Event Organizers"**), with respect to any liability, claim(s), demand(s), cause(s) of action, damage(s), loss, or expense (including court costs and reasonable attorney fees) of any kind or nature ("**Liability**") which may arise out of, result from, or relate in any way to my participation in the USEF Events, including claims for Liability caused in whole or in part by the negligent acts or omissions of the Released Parties.

E. COMPLETE AGREEMENT AND SEVERABILITY CLAUSE: This Agreement represents the complete understanding between the parties regarding these issues and no oral representations, statements or inducements have been made apart from this Agreement. If any provision of this Agreement is held to be unlawful, void, or for any reason unenforceable, then that provision shall be deemed severable from this Agreement and shall not affect the validity and enforceability of any remaining provisions.

**I HAVE CAREFULLY READ THIS DOCUMENT IN ITS ENTIRETY, UNDERSTAND ALL OF ITS TERMS AND CONDITIONS, AND KNOW IT CONTAINS AN ASSUMPTION OF RISK, RELEASE AND WAIVER FROM LIABILITY, AS WELL AS A HOLD HARMLESS AND INDEMNIFICATION OBLIGATIONS.**

By signing below, I (as the participant or as the Parent/Legal Guardian of the minor identified below) hereby accept and agree to the terms and conditions of this Agreement in connection with my (or the minor's) participation in any USEF Event. If, despite this Agreement, I, or anyone on my behalf or the minor's behalf, makes a claim for Liability against any of the Released Parties, I will indemnify, defend and hold harmless each of the Released Parties from any such Liabilities as the result of such claim.

**The parties agree that this agreement may be electronically signed. The parties agree that the electronic signatures appearing on this agreement are the same as handwritten signatures for the purposes of validity, enforceability, and admissibility.**

☐ RIDER/DRIVER/HANDLER/VAULTER/LONGEUR ☐ OWNER ☐ TRAINER ☐ OFFICIAL ☐ STAFF ☐ VOLUNTEER ☐ COACH (IF APPLICABLE)

Signature: \_\_\_\_\_ Date: \_\_\_\_\_ Print Name: \_\_\_\_\_

Parent/Guardian Signature: (Required if Rider/Driver/Handler/Vaulter/Longeur is a minor) \_\_\_\_\_ Date: \_\_\_\_\_

Print Parent//Guardian Name: \_\_\_\_\_ Emergency Contact Phone No. \_\_\_\_\_





**VACCINATION RECORD: EQUINE INFLUENZA AND EQUINE HERPES**  
UNITED STATES EQUESTRIAN FEDERATION

Owner Name: \_\_\_\_\_

Horse Name: \_\_\_\_\_

This form may be used to for documenting Equine Influenza and Equine Herpes Virus (Rhinopneumonitis) vaccinations as defined in USEF GR845.

Date (Day/Month/Year)	Place and Country	Vaccine			Name, Signature, and/or Stamp of Veterinarian
		Name	Batch	Route Mode	



# United States Dressage Federation <sup>TM</sup>

## **OPPORTUNITIES FOR 3-6 YEAR OLD HORSES** **COMPETING IN MATERIALE AND/OR** **USEF/FEI YOUNG HORSE TESTS**

	3 YEAR OLD	4 YEAR OLD	5 YEAR OLD	6 YEAR OLD
<b>ADEQUAN®/YEAR-END AWARDS*</b>				
<b>Materiale Horse of the Year Award</b> (min. 3 scores required)	X	X	X	
<b>USEF Four-Year-Old Award</b> (min. 4 scores required)^		X		
<b>FEI Five-Year-Old Award</b> (min. 4 scores required)^			X	
<b>FEI Six-Year-Old Award</b> (min. 4 scores required)^				X
<b>ProElite/BREEDERS CHAMPIONSHIP SERIES**</b>				
<b>Materiale Championships</b> (min. 1 score required of 72% or higher)				
Three-Year-Old Championship	X			
Four-Year-Old Championship		X		
Five-Year-Old Championship			X	

### **For Adequan®/USDF Year-End Awards - at the time scores are earned**

- \* Horse must have a USDF Lifetime Horse Registration Number (LHR)
- \* Owner must have a USDF Participating (PM) or Business Membership (BM)
- \* Rider must have a USDF PM
- \* Competition year starts October 1 and ends September 30

### **For ProElite/USDF Breeders Championship Series - to compete in the championships**

- \*\* Horse must have a USDF Horse Identification Number or LHR
- \*\* Owner must have a USDF Group Membership, PM, BM or pay a non-member fee per competition
- \*\* Rider must have a USDF PM
- \*\* Competition year starts January 1 and ends September 30

^Scores earned in the USEF Four- and FEI Five- & Six-Year-Old tests are also eligible to be used towards a USDF Horse Performance Certificate

^^ Horses competing in the ProElite/USDF Breeders Championship Series Final Three-or Four-Year-Old Materiale Championships may also be eligible for the Prospect awards

Complete Award/Championship Requirements Listed in the current *USDF Member Guide*

Revised 02/12/24

## **ATTENTION COMPETITORS**

Each competitor is responsible for supplying management with correct applicable numbers (USDF and USEF) for horse, owner, rider, and trainer, before the day(s) of the competition.

The scores of competitors who fail to supply correct numbers may not be counted toward national awards.

# YOU ARE NOT ALONE

A white silhouette of a person wearing a riding helmet and sitting on a horse, positioned in front of the large text 'YOU ARE NOT ALONE'.

US Equestrian wants you to know: if you are a victim or survivor of sexual abuse or suspect abuse of any kind, there are resources and people to help.

## REPORT

833-5US-SAFE or [uscenterforsafesport.org/report-a-concern](https://uscenterforsafesport.org/report-a-concern)

## 24/7 HELPLINE

866-200-0796 or visit [safesporthepline.org](https://safesporthepline.org)

## TRAINING & RESOURCES

Free to US Equestrian members at [usef.org/safesport](https://usef.org/safesport).

#youarenotalone







## 2026 Great American Insurance Group/USDF Regional Dressage Championships

A single Regional Dressage Championship program organized by the United States Dressage Federation (USDF), and recognized by the United States Equestrian Federation, Inc. (USEF), will be held in each of the nine USDF regions. In addition, Alaska and Hawaii may each hold state championships if an official request from a Group Member Organization (GMO) is received by April 1 of the prior year. The Regional Championship Program Rules can be found on the USDF website at [www.usdf.org](http://www.usdf.org). Please refer to the 2026 USDF Member Guide for the comprehensive list of rules and requirements for this program.

### Membership/Registration Requirements for Qualifying and Championships

*All memberships and registrations/recordings must be correct and current at the time qualifying scores are earned and at the time of the championships.*

Rider:

- Must have a USDF Participating\* Membership (PM).
- Must have a USEF membership (Active or Life).

Horse:

- Must have a USDF Lifetime Horse Registration (LHR).
- Must have a USEF (Annual or Lifetime) Horse Recording.
- USDF horse registration and USEF horse recording must be in the name(s) of the current owner(s) or lessee(s).  
A horse is not required to have breed registry papers.
- Horses must be entered in qualifying and championship classes under their official recorded names and ownership as specified in USEF GR1102.3, and transfers of ownership or lease registrations must be completed in compliance with USEF rules GR1105 and GR1108 prior to the competition in order for the horse to compete under the name of the new owner or lessee. (USEF DR127.2)

Owner:

- Must have a USDF Participating or Business Membership and a USEF membership (Active or Life Membership or Annual or Life Recorded Farm/Business). If the horse has more than one owner, at least one owner must have both active USEF membership and active USDF Participating or Business Membership and must be the owner of record with USEF and USDF. For a business or farm to be the valid owner under this requirement, it must be listed as an owner of the horse with both USEF and USDF.

\* PMs are USDF members who join USDF directly. USDF Group Members (GM) are ineligible.

**Minimum Qualifying Scores:** One set of nationally-standardized qualifying scores has been established for all USEF/USDF Regional Championships, for Training Level through Grand Prix, in three divisions: open, adult amateur and junior/young rider.

The minimum percentages are as follows:

	OPEN	AA	JR/YR
Training Level (Test 3)	68%	63%	63%
First Level (Test 3)	66%	62%	62%
Second Level (Test 3)	64%	61%	61%
Third Level (Test 3)	62%	60%	60%
Fourth Level (Test 3)	62%	60%	60%
Prix St. Georges	62%	60%	60%
Intermediate I	62%	60%	60%
Intermediate II	62%	60%	60%
Grand Prix	60%	60%	60%
<b>FREESTYLE</b>	<b>OPEN/Jr/YR</b>	<b>AA</b>	
First Level	65%	65%	
Second Level	65%	65%	
Third Level	65%	65%	
Fourth Level	65%	65%	
Intermediate I	65%	65%	
Grand Prix	65%	65%	

**USDF Membership Benefits:** USDF is dedicated to education, the recognition of achievement, and promotion of dressage. For details on member benefits, including educational programs, awards, and other opportunities, refer to the *USDF Member Guide* or the USDF website at [www.usdf.org](http://www.usdf.org).

**This  
competition  
is recognized  
by USDF  
for 2025**

**Membership Requirements for USEF-licensed/USDF-recognized Competitions:** Owners and riders, including foreign riders and owners who are not residents of the US, wishing to participate in a USEF-licensed/USDF-recognized competition as a rider or owner/lessee, must have either a USDF Group Membership (GM), Participating Membership (PM), or have a USDF Non-Member (NM) identification number and pay the USDF Non-Member (NM) fee. (Note: USDF Business Members can own horses but cannot compete as riders with their USDF Business Membership.)

Horses competing at USEF-licensed/USDF-recognized competitions must have either a USDF Horse Identification (HID) number or a USDF Lifetime Horse Registration (LHR). Proper credentials or verification certificates must be presented to the competition secretary.

Riders and owners wishing to participate in a USEF-licensed/USDF-recognized competition, and not able to present the competition secretary with verification of a USDF membership or NM identification, and USDF LHR or USDF HID, must complete a USDF Competition Affidavit Form and pay the \$5 affidavit filing fee. A copy of a completed affidavit form from another competition may also be used for verification purposes for up to 60 days. (Exception: Affidavits cannot be used at Great American Insurance Group/USDF Regional Dressage Championships.)

**Exceptions:**

- Horses competing only in Individual Breed Classes (IBCs) at DSHB competitions, sires and dams of horses in DSHB group classes, where those sires or dams are not actually competing in the same competition, horses competing only in breed restricted dressage or DSHB classes at Regular Competitions (e.g. all Arabian, all Friesian, or all Morgan classes), or in USDF Introductory Level tests, pas de deux or quadrille, are exempt from this requirement. Also exempt are horses ridden in leadline, exhibitions, games and races, classes for 4-H members, walk-trot, academy, and opportunity classes.
- Riders and owners/lessees competing only in classes which are exempt from the USDF HID requirements are also exempt from the USDF NM identification number and NM fee requirements. Also exempt are handlers of horses competing in DSHB In-Hand or Group classes.

**Memberships Defined**

**Participating Membership (PM):** A membership issued to an individual directly by USDF. The membership year is December 1 through November 30. PMs are available for 1-year (\$100), 5-years (\$400), or life (\$2,000). A USDF Youth Participating Membership (YPM) is available for individuals who have not reached their 21<sup>st</sup> birthday by December 1 of the current membership year (\$80). A PM allows the member to compete at USEF-licensed/USDF-recognized competitions and to participate as a rider and/or owner/lessee for all Adequan®/USDF Year-End Awards and the Great American Insurance Group/USDF Regional Dressage Championship program.

**Group Membership (GM):** A membership issued to an individual by USDF when the member name and dues are submitted to USDF through an affiliate Group Member Organization (GMO). The GM year begins December 1 and ends November 30. A GM allows the member to compete at USEF-licensed/USDF-recognized competitions and participate in the USDF Rider Awards Program.

**Business Membership (BM):** A membership that runs December 1 through November 30 and is issued to a business or organization directly by USDF. The USDF BM (\$280) offers a wider variety of advertising benefits. BMs satisfy requirements of horse ownership only.

**Non-Member (NM) Identification Number:** For each USDF NM owner/lessee and USDF NM rider there will be a USDF NM fee of \$55 per competition that must be collected by the show secretary and submitted to USDF, along with the USDF Report of Fees document and the \$5 affidavit fee and Competition Affidavit Form if the person cannot provide a copy of their USDF NM card. Owners/lessees or riders exempt from the NM number requirements are also exempt from paying the USDF NM fee. If there are multiple owners of a horse and all are NMs, only one of the owners must pay the NM fee. If the horse has at least one owner who is a current USDF PM, GM, or BM there is no NM fee assessed. Competition management will be invoiced for all applicable USDF NM fees not received with the USDF post-competition paperwork, along with a report listing all USDF NMs. Competition management is then required to submit the NM fees within 30 days to the USDF. An individual with a USDF NM identification number is not eligible for any USDF membership benefits. Once a USDF NM number has been assigned, a USDF NM card can be obtained from the USDF website.

**Horse Identification (HID) Number:** A one-time tracking number for horses (\$45). Scores earned by a horse with an HID number will be recorded but will NOT be counted towards Adequan®/USDF Year-End Awards. A horse with an HID number is not eligible to compete in Great American Insurance Group/USDF Regional qualifying or championship classes. An HID number can be upgraded to a Lifetime Horse Registration (LHR) for a fee of \$95. If a horse has a USDF LHR it does not need an HID number. An HID number is a one-time fee that does not need to be renewed.

**Lifetime Horse Registration (LHR):** A horse with an LHR (\$140) is eligible for Adequan®/USDF Year-End Awards, and eligible to compete in Great American Insurance Group/USDF Regional qualifying and championship classes, assuming requirements for the owner and rider are met. If a horse has an LHR it does not need an HID number. An LHR does not need to be renewed.

**How to Join USDF**

Applications for USDF Participating Membership (PM), Business Membership (BM), Horse Identification (HID) number, and Lifetime Horse Registration (LHR) may be found in the following locations:

- On the USDF website: [www.usdf.org](http://www.usdf.org). You can submit the application online or download the form.
- In the show office at USEF-licensed/USDF-recognized competitions classified by USEF as Dressage Competitions, and Regular Competitions which are open to all breeds.
- By calling or writing the USDF office at (859) 971-2277, 4051 Iron Works Parkway, Lexington, KY 40511

The effective date of membership is the date the form and correct fees are received in the USDF office or, if applying at a competition, the date accepted by the competition secretary, provided the application is signed and dated by the competition secretary, member, and/or horse owner on that same day.



# HITS

**ENJOY THE PREMIER HITS EXPERIENCE FROM COAST TO COAST,** with six iconic venues, elite competition opportunities, generous prize money offerings, and unique hospitality. From the dazzling hunters and incredible jumpers to the captivating dressage movements, HITS hosts more than 130 weeks of hunter/jumper and dressage competitions throughout the year.



**THE ACTION-PACKED HUNTER/JUMPER HORSE SHOW SCHEDULE IN 2025** across HITS Chicago, HITS Culpeper, HITS Del Mar, HITS Hudson Valley, HITS Ocala, and HITS Vermont includes seven weeks of International FEI show jumping competition, as well as five weeks with a World Champion Hunter Rider (WCHR) designation.

Plus, exhibitor-favorite classes exclusive to HITS, such as the STX Open Speed Series, Horseflight Jumper Classic Series, Arion Sellier Equitation Championships, and the ClipMyHorse.tv qualifiers toward the 2025 \$200,000 ClipMyHorse.tv Hunter Classic Final, make HITS the place to be all year long.



**HITS OCALA**  
POST TIME FARM

December to March

**HITS CULPEPER**  
COMMONWEALTH PARK

April to September

**HITS CHICAGO**  
LAMPLIGHT  
EQUESTRIAN CENTER  
May to September

**HITS SAUGERTIES**  
HITS-ON-THE-HUDSON

May to October

**HITS VERMONT**  
HAROLD BEEBE FARM

July to August

**HITS DEL MAR**  
DEL MAR HORSEPARK

April to August

THIS IS MORE THAN A HORSE SHOW, **THIS IS HITS!**

THE  
**LEAGUE** | presented by  
**MARSHALL  
+ STERLING**





# MAAPP

## MINOR ATHLETE ABUSE PREVENTION

### LEARN ABOUT MAAP POLICIES



Safe Sport Training



Local Travel



One-On-One Interactions



Social Media & Electronic Communications



Read about these & more at [usef.org/MAAPP](https://usef.org/MAAPP)

### REPORT MAAP POLICY VIOLATIONS



[usef.org/safe-sport/reporting](https://usef.org/safe-sport/reporting)

859-225-6915 or Text Anonymously 855-682-8733



# HITS

## DRESSAGE RIDERS CAN STRUT DOWN CENTERLINE WITH EXCITING COMPETITION

at HITS Chicago, HITS Del Mar, HITS Hudson Valley, and new in 2025, HITS Culpeper. Highlighted by three CDI weeks at HITS Del Mar, the U.S. Dressage Festival of Champions at HITS Chicago, and the Great American Insurance Group/United States Dressage Federation Region 8 Dressage Championship at HITS Hudson Valley, these popular series offer classes for horses and riders of all levels.



**HITS CULPEPER**  
COMMONWEALTH PARK

June 20-22

**HITS CHICAGO**  
LAMPLIGHT EQUESTRIAN CENTER

May to August

**HITS SAUGERTIES**  
HITS-ON-THE-HUDSON

May to September

**HITS DEL MAR**  
DEL MAR HORSE PARK

February to October