



# DEL MAR NATIONAL

## *Horse Show*



Del Mar Horsepark

APRIL 29 – MAY 4, 2025

USEF PREMIER | JUMPER 6



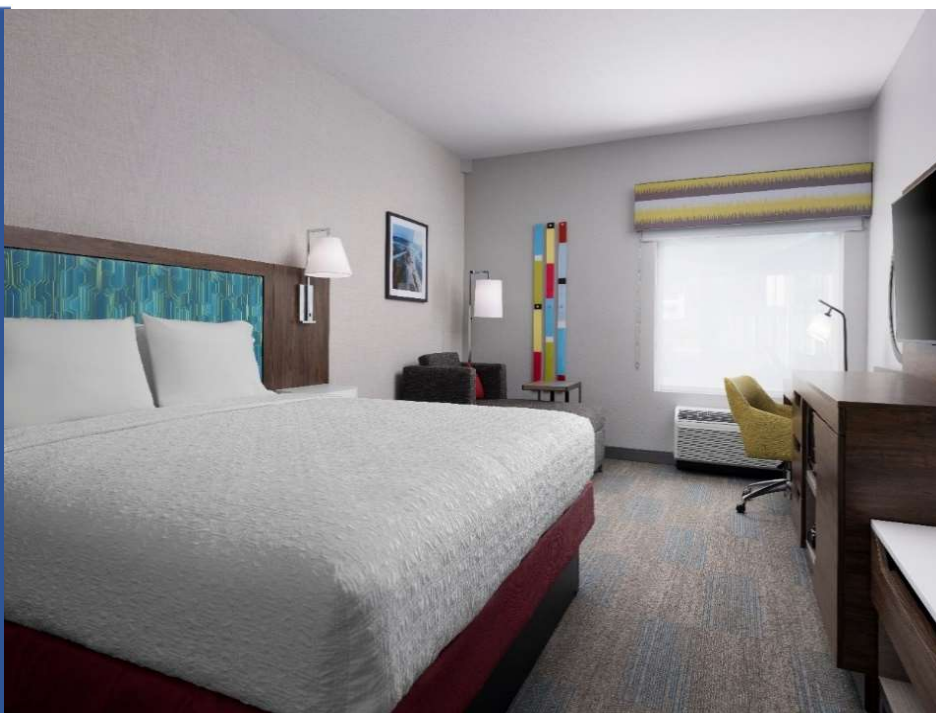
HITS

HITS, LLC. | 151 Stockade Dr., Kingston, NY 12401  
845.246.8833 | [info@HITSShows.com](mailto:info@HITSShows.com) | [HITSShows.com](http://HITSShows.com)

US EQUESTRIAN FEDERATION  
**HERITAGE**  
COMPETITION



- 129 newly renovated Guest Rooms  
(all non-smoking)  
(1 king or 2 queen beds)
- Located 4 miles from HITS Del Mar Horse Shows and 2 miles from Del Mar beaches
- Daily Complimentary Breakfast Buffet with a variety of hot and cold items
- Complimentary shuttle service Monday-Friday at set times (*within 5-mile radius*)
- Complimentary Wi-Fi in guest rooms and all public areas
- Complimentary access to new, larger fitness room and equipment
- Heated outdoor swimming pool
- Guest self service laundry
- (4) EV Charging Stations
- Located 17 miles from the San Diego International Airport (SAN) and 18 miles from McClellan Palomar Airport (CRQ)
- In room amenities include 50" SMART TV's, mini refrigerators, microwaves, coffee makers and safes in every guest room



## Welcome to our newly renovated hotel!

As a member of the Hilton family of hotels, the Hampton by Hilton San Diego/Del Mar offers both business and leisure travelers 129 newly renovated guest rooms with all the conveniences of home, an extraordinary level of service, and unprecedented value. Conveniently located in the seaside Del Mar area, you can easily access miles of beaches, HITS Del Mar Horse Park, Del Mar Fairgrounds and Racetrack and many shops and restaurants.

We look forward to welcoming you as our guests!

Call hotel directly for special horse show room rates at (858) 792-5557.



# HITS DEL MAR NATIONAL HORSE SHOW



**DEL MAR NATIONAL**  
*Horse Show*



April 29 - May 4

**Entries Due:** Wednesday, April 9, 2025

**Entries Open:** Monday, February 10, 2025

## HUNTER PRIZE MONEY

**Offered in 2024:** \$76,150

**Paid in 2024:** \$75,000

**Offered in 2025:** \$78,600

**Guaranteed:** \$75,000

## SHOW APPROVALS

USEF PREMIER | USEF JUMPER 6 | CPHA | THE LEAGUE | NAL | NHS | PCHA | TAKE2 | USHJA | WIHS

## HITS DEL MAR NATIONAL STAFF & OFFICIALS

Mrs. Alexandra Zulia	Show Manager	Mount Pleasant, SC
Ms. Brett Waters	Director of Horse Show Administration	Ocala, FL
Ms. Retha Sternberg	Horse Show Secretary	Yorba Linda, CA
Ms. Ashley Baker	Marketing & Sponsorship	Wellington, FL
Mrs. Leslie Phillips	Art Director	Kingston, NY
Mrs. Leigh Tricker	The League presented by M+S Insurance Representative	South Dartmouth, MA
Mr. Mark McGowan	Grand Prix Course Designer	Nantwich, United Kingdom
Ms. Meghan Rawlins	Course Designer	Victoria, BC, Canada
Mrs. Lynn Mullins	Course Designer	Reno, NV
Ms. Susan Ashe	Hunter & Equitation Judge	Wellington, FL
Mr. Troy Hendricks	Hunter & Equitation Judge	Glenmoore, PA
Mr. Ronnie Beard	Hunter & Equitation Judge	West Palm Beach, FL
Mr. James Waldman	Hunter & Equitation Judge	Vista, CA
Mr. Robert McNeel	Hunter & Equitation Judge	Wellington, FL
Mr. Jack Robson	Jumper Judge	Coronado, CA
Mr. Max Von Zimmerman	Jumper Judge	Snohomish, WA
Ms. Katie Frank	Jumper Judge	Carlsbad, CA
Mr. Davin Malmqvist	Jumper Judge	Littleton, CO
Mrs. Penny Carpenter	Steward	Palm Desert, CA
Ms. Debbie Sands	Steward	Encinitas, CA
Ms. Sharon Stewart-Wells	Steward	Carlsbad, CA
Mrs. Diana Gatchalian	Steward	Temecula, CA
San Diego Equine Group	Horse Show Veterinarian, 760.591.9952	San Marcos, CA
Miguel Gonzales	Horse Show Farrier, 760.505.8175	Carlsbad, CA



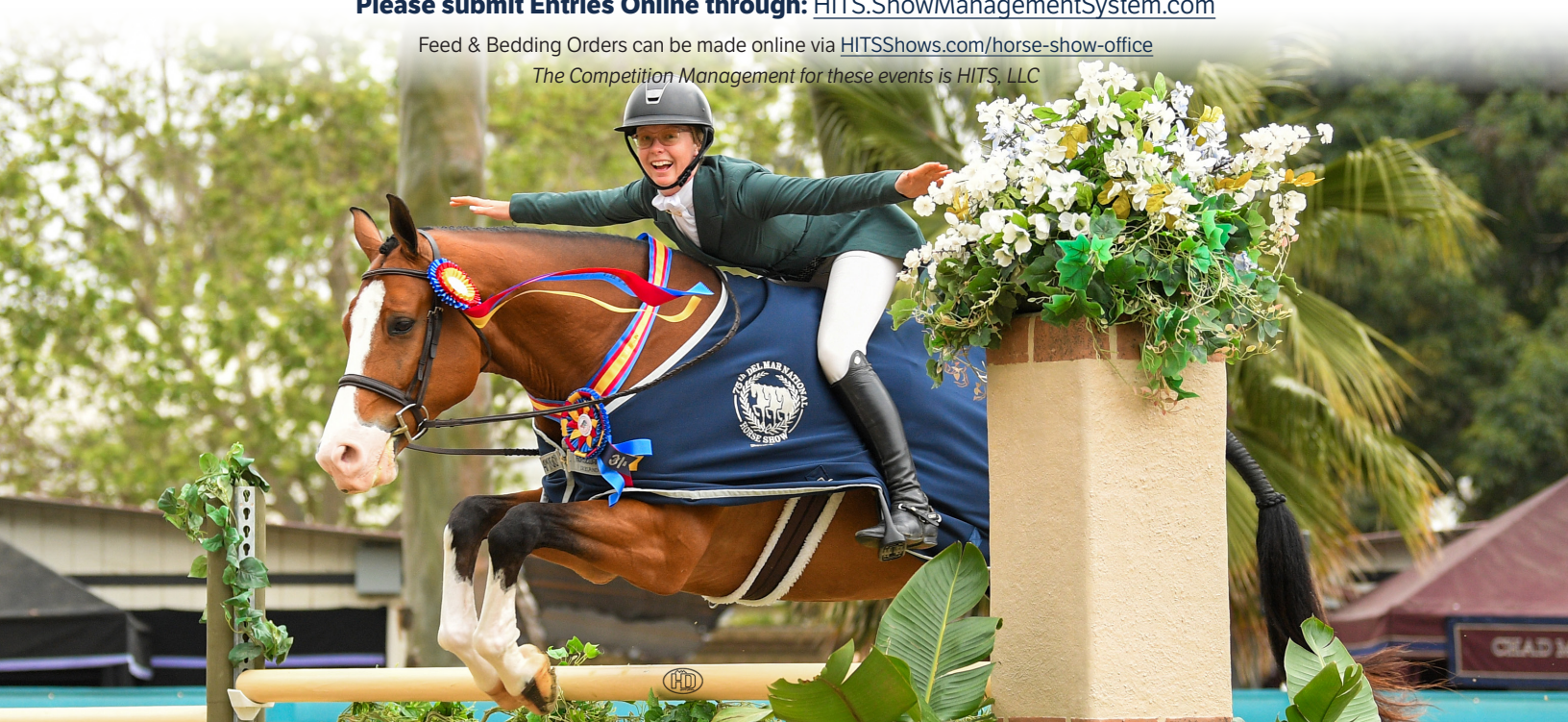
Please visit [Ryegate.com/USET.php](https://Ryegate.com/USET.php)  
Upcoming Classes to determine  
which classes will be included in the Rolex Computer Ranking List.



**Please submit Entries Online through:** [HITS.ShowManagementSystem.com](https://HITS.ShowManagementSystem.com)

Feed & Bedding Orders can be made online via [HITSShows.com/horse-show-office](https://HITSShows.com/horse-show-office)

The Competition Management for these events is HITS, LLC





For goal-oriented riders  
at all levels of experience.

## Join now to take advantage of exciting opportunities for Junior & Amateur Riders!

- Compete in more than 20 Feature Events including Hunter Derbies, Equitation Medal classes, and Jumper Classics.
- Earn points toward prestigious Year-end Championships and High Point Awards.
- Participate at more than 800 host shows Nationwide.

To become a host show, complete the show application [here](#).  
To become a member, click [here](#).

**MIDWEST FINALS DURING HITS CHICAGO**  
**NATIONAL FINALS DURING HITS HUDSON VALLEY**  
SEPTEMBER 10-14, 2025





# HITS DEL MAR NATIONAL HORSE SHOW CLASS LISTING

## HUNTERS

NOMINATION FEES		FEE			
<b>Nomination 1</b> (Hunters & Equitation)		\$75			
<b>Nomination 2</b> (Jumpers 1.15m & below)		\$100			
<b>Nomination 3</b> (Jumpers 1.20m & above)		\$200			

DIVISION/CLASS	FENCE HEIGHT	CLASS NUMBERS	DIVISION FEE	CLASS FEE	PRIZE \$ / O/F
<b>UNRATED OPEN HUNTER SECTIONS</b>		<i>The last class # is Under Saddle.</i>			
<b>Baby Green Hunter</b> A horse of any age in its 1st year of showing.	2'6"	25,26,27,28,29	\$250	\$60	-
<b>HITS Hunter 2'</b>	2'	700,701,702	\$175	\$60	-
<b>HITS Hunter 2'3"</b>	2'3"	706,707,708	\$175	\$60	-
<b>HITS Hunter 2'6"</b>	2'6"	711,712,713,714,715	\$250	\$60	-
<b>HITS Hunter 2'9"</b>	2'9"	716,717,718	\$175	\$60	-
<b>HITS Hunter 3'</b>	3'	720,721,722,723,724	\$250	\$60	-
<b>HITS Hunter 3'3"</b>	3'3"	725,726,727	\$175	\$60	-
<b>HITS Hunter 3'6"</b>	3'6"	755,756,757	\$175	\$60	-
<b>The League 2'6" Hunter Schooling</b>	2'6"	735,736 (No U/S)	-	\$60	-
<b>The League 2'9" Hunter Schooling</b>	2'9"	737,738 (No U/S)	-	\$60	-
<b>The League 3' Hunter Schooling</b>	3'	740,741,742,743 (No U/S)	-	\$60	-
<b>The League 3'3" Hunter Schooling</b>	3'3"	745,746 (No U/S)	-	\$60	-
<b>Derby Schooling</b> (IF TIME PERMITS)	3' - 3-9"	747 (No U/S)	-	\$60	-
<b>RATED OPEN HUNTER SECTIONS</b>		<i>Underlined class is Handy Hunter. The last class # is Under Saddle.</i>			
<b>USHJA 2' Hunter</b>	2'	15,16,17,18,19	\$275	\$60	-
<b>USHJA 2'3" Hunter</b>	2'3"	20,21,22,23,24	\$275	\$60	-
<b>USHJA 2'6" Hunter</b>	2'6"	515,516,517,518,519	\$275	\$60	-
<b>USHJA 2'9" Hunter</b>	2'9"	615,616,617,618,619	\$275	\$60	-
<b>USHJA 3' Hunter</b>	3'	5,6,7,8,9	\$275	\$60	-
USHJA Hunter (USEF-Rated) Open to a horse or pony of any age and is not restricted by prior showing in any division. Distances will NOT be adjusted for ponies.					
<b>Take 2 Thoroughbred Hunter</b>	3'	525,526,527,528,529	\$275	\$60	-
Open to horses of any age that are registered in any Stud Book recognized by the Jockey Club. USEF-Rated.					
<b>Young Hunter 5 &amp; Under</b>	2'9"	530,531,532,533,534	\$100	Div Fee Only	-
<b>Young Hunter 6 &amp; Under</b>	3'	535,536,537,538,539	\$100	Div Fee Only	-
<b>Young Hunter 7 &amp; Under</b>	3'3"	540,541,542,543,544	\$100	Div Fee Only	-
<b>Green Hunter 3'</b>	3'	35,36,37,38,39	\$325	Div Fee Only	\$250
<b>Green Hunter 3'3"</b>	3'3"	40,41,42,43,44	\$325	Div Fee Only	\$250
<b>Green Hunter 3'6"</b>	3'6"	45,46,47,48,49	\$325	Div Fee Only	\$300
<b>Green Hunter 3'9"</b>	3'9"	50,51,52,53,54	\$325	Div Fee Only	\$300
<b>High Performance Hunter</b>	4'	55,56,57,58,59	\$375	\$90	\$350
<b>Green Conformation Hunter Model</b>		60	-	\$30	-
<b>Green Conformation Hunter</b>	3'6"	61,62,63,64,65	\$325	Div Fee Only	\$300
<b>High Performance Conformation Hunter Model</b>		66	-	\$30	-
<b>High Performance Conformation Hunter</b>	3'9"	67,68,69,70,71	\$325	Div Fee Only	\$300
<b>Performance Hunter 3'3"</b>	3'3"	75,76,77,78,79	\$325	\$75	\$250
<b>Performance Hunter 3'6"</b>	3'6"	80,81,82,83,84	\$325	\$75	\$250
<b>RATED JUNIOR &amp; AMATEUR HUNTER SECTIONS</b>		<i>Underlined class is Handy Hunter. The last class # is Under Saddle.</i>			
<b>Amateur-Owner 3'6" Hunter 18-35</b>	3'6"	85,86,87,88,89	\$325	Div Fee Only	\$300
<b>Amateur-Owner 3'6" Hunter 36 &amp; Over</b>	3'6"	90,91,92,93,94	\$325	Div Fee Only	\$300
<b>Amateur-Owner 3'3" Hunter 18-35</b>	3'3"	95,96,97,98,99	\$325	Div Fee Only	\$250
<b>Amateur-Owner 3'3" Hunter 36 &amp; Over</b>	3'3"	100,101,102,103,104	\$325	Div Fee Only	\$250
<b>Small Junior 3'6" Hunter 15 &amp; Under</b>	3'6"	120,121,122,123,124	\$325	Div Fee Only	\$300
<b>Small Junior 3'6" Hunter 16-17</b>	3'6"	125,126,127,128,129	\$325	Div Fee Only	\$300
<b>Large Junior 3'6" Hunter 15 &amp; Under</b>	3'6"	130,131,132,133,134	\$325	Div Fee Only	\$300
<b>Large Junior 3'6" Hunter 16-17</b>	3'6"	135,136,137,138,139	\$325	Div Fee Only	\$300
<b>Small Junior 3'3" Hunter</b>	3'3"	140,141,142,143,144	\$325	Div Fee Only	\$250
<b>Large Junior 3'3" Hunter</b>	3'3"	145,146,147,148,149	\$325	Div Fee Only	\$250
<b>RATED CHILD &amp; ADULT HUNTER SECTIONS</b>		<i>The last class # is Under Saddle.</i>			
<b>Adult Hunter 18-35</b>	3'	105,106,107,108,109	\$300	\$60	\$100
<b>Adult Hunter 36-49</b>	3'	110,111,112,113,114	\$300	\$60	\$100
<b>Adult Hunter 50 &amp; Over</b>	3'	115,116,117,118,119	\$300	\$60	\$100
<b>Low Adult Hunter</b>	2'6"	605,606,607,608,609	\$275	\$60	-
<b>Children's Hunter 13 &amp; Under</b>	3'	160,161,162,163,164	\$300	\$60	\$100
<b>Children's Hunter 14-17</b>	3'	165,166,167,168,169	\$300	\$60	\$100
<b>Low Children's Hunter</b>	2'6"	660,661,662,663,664	\$275	\$60	-
<b>Children's Pony Hunter - Small/Medium</b>	2'	150,151,152,153,154	\$275	\$60	-
<b>Children's Pony Hunter - Large</b>	2'6"	155,156,157,158,159	\$275	\$60	-
Children's Hunter Pony Divisions will be set on a 12' stride.					
<b>USHJA 2'9" Junior Hunter</b>	2'9"	565,566,567,568,569	\$275	\$60	-
<b>USHJA 2'9" Adult Amateur Hunter</b>	2'9"	570,571,572,573,574	\$275	\$60	-

# HITS DEL MAR NATIONAL HORSE SHOW CLASS LISTING

## HUNTERS

DIVISION/CLASS	FENCE HEIGHT	CLASS NUMBERS	DIVISION FEE	CLASS FEE	PRIZE \$ / O/F
<b>RATED PONY HUNTER</b>	<i>Underlined class is Handy Hunter, Last class # is Under Saddle.</i>				
<b>Green Pony Schooling</b> (Unrated)	2'3",2'6",2'9"	579	-	\$60	-
<b>Small/Medium Green Pony Hunter</b>	2'3",2'6"	171,172,173,174,175	\$275	Div Fee Only	\$100
<b>Large Green Pony Hunter</b>	2'9"	177,178,179,180,181	\$275	Div Fee Only	\$100
<b>Small Pony Hunter</b>	2'3"	183,184,185, <u>186</u> ,187	\$295	Div Fee Only	\$200
<b>Medium Pony Hunter</b>	2'6"	189,190,191, <u>192</u> ,193	\$295	Div Fee Only	\$200
<b>Large Pony Hunter</b>	2'9"	195,196,197, <u>198</u> ,199	\$295	Div Fee Only	\$200
<b>UNRATED NON-PRO HUNTER SECTIONS</b>	<i>Last class # is Under Saddle.</i>				
<b>Opportunity Crossrail Hunter</b> Open to Junior & Amateur riders.	18"	764,765,766	\$175	\$60	-
<b>Short Stirrup Hunter</b> Open to riders age 12 & under. No oxers.	2'	595,596,597	\$175	\$60	-
<b>Long Stirrup Hunter</b> Open to riders 13 & over. No oxers.	2'	795,796,797	\$175	\$60	-
<b>Pre- Child/Adult Hunter</b> Rider may not cross enter into any USEF rated Hunter Divisions. Exception: Low Child/Adult Hunter and USHJA Hunter up to 2'6". Courses will have oxers.	2'	545,546,547,548	\$200	\$60	-
<b>Modified Junior/Amateur Hunter</b>	3'3"	575,576,577	\$175	\$60	-
<b>Schooling Pony Hunter</b> Open to Junior and Adult Amateur riders on ponies. May only compete once. Courses to be set using regular pony strides.	2',2'3",2'6",2'9"	585,586,587,588	\$200	\$60	-

## EQUITATION

<b>EQUITATION SECTIONS</b>	<i>First class# is the flat class.</i>				
<b>Equitation 11 &amp; Under</b>	2'6"	300,301,302	-	\$60	-
<b>Equitation 12-14</b>	3'	304,305,306	-	\$60	-
<b>Equitation 15-17</b>	3'3"	312,313,314	-	\$60	-
<b>Pony Equitation</b>	2'3",2'6",2'9"	316,317,318	-	\$60	-
<b>Adult Equitation 18+</b>	3'	320,321,322	-	\$60	-
<b>2'9" Junior/Adult Equitation</b> No cross entry into any class with fences 3'6" or higher.	2'9"	344,345,346	-	\$60	-
<b>Low Children's Equitation</b>	2'6"	336,337,338	-	\$60	-
<b>Low Adult Equitation</b> No cross entry into any class with fences 3'3" or higher.	2'6"	352,353,354	-	\$60	-
<b>Short Stirrup Equitation</b> Open to riders age 12 & under. No oxers.	2'	360,361,362	-	\$60	-
<b>Long Stirrup Equitation</b> Open to riders 13 & over. No oxers.	2'	365,366,367	-	\$60	-
<b>Opportunity Crossrail Equitation</b> Open to Junior & Amateur riders.	18"	767,768,769	-	\$60	-
<b>Opportunity Leadline</b> No membership required. Riders may not show in any other class at the show. Horses to be ridden must already be entered in the show.	-	625	-	\$25	-

## JUMPERS

DIVISION/CLASS	FENCE HEIGHT	CLASS NUMBERS	CLASS FEE	PRIZE \$/CLASS
<b>JUMPER SECTIONS</b>	<i>Jumper Nomination .70m-1.15m = \$100, Jumper Nomination 1.20m &amp; above = \$200</i>			
<b>.70m Jumper</b>	.70m	200,201,202	\$60	-
<b>.80m Jumper</b>	.80m	204,205,206	\$60	-
<b>.90m Jumper</b>	.90m	208,209,210	\$60	-
<b>1.0m Jumper</b>	1.0m	212,213,214,215	\$60	-
<b>1.0m Blue Ribbon Jumper</b>	1.0m	751,752	\$60	-
<b>1.10m Jumper</b>	1.10m	216,217,218	\$60	-
<b>1.15m Jumper</b>	1.15m	220,221	\$60	-
<b>Amateur 1.10m Jumper</b>	1.10m	224,225,226	\$60	-
<b>Amateur 1.0m Jumper</b>	1.0m	236,237,238	\$60	-
<b>Junior 1.10m Jumper</b>	1.10m	247,248,249	\$60	-
<b>Junior 1.0m Jumper</b>	1.0m	256,257,258	\$60	-
<b>Junior/Amateur .90m Jumper</b> Rider MAY NOT cross enter into any class with fences 1.10m or higher.	.90m	260,261,262	\$60	-
<b>Junior/Amateur .80m Jumper</b>	.80m	264,265,266	\$60	-
<b>Itty Bitty Jr/Am .70m Jumper</b>	.70m	244,245,246	\$60	-
<b>The League - Pony Jumper</b> Small - .70m, Medium - .80m, Large - .90m.	.70m, .80m, .90m	240,241,242	\$60	-
<b>Take 2 Thoroughbred Jumper</b>	1.0m	268,269,270	\$60	-
<b>5-Year-Old Jumper</b>	1.0m-1.05m	291,292,293	\$60	-
<b>6-Year-Old Jumper</b>	1.20m	294,295,296	\$60	\$200
<b>7-Year-Old Jumper</b>	1.30m	297,298,299	\$60	\$200
<b>1.20m Jumper</b>	1.20m	271,272,273	\$60	\$250
<b>1.30m Jumper</b>	1.30m	275,276,277	\$75	\$500
<b>1.40m Jumper</b>	1.40m	278,279	\$100	\$1,000
<b>Junior/Amateur 1.20m Jumper</b>	1.20m	281,282,283	\$60	\$250
<b>Junior/Amateur 1.30m Jumper</b>	1.30m	284,285,286	\$75	\$500
<b>Junior/Amateur 1.40m Jumper</b>	1.40m	287,288,289	\$75	\$500



# HITS DEL MAR NATIONAL HORSE SHOW CLASS LISTING

## MEDALS

MEDAL CLASSES	HEIGHT	CLASS NUMBER	CLASS FEE
<i>Medal Class specifications will be available in the Horse Show Office.</i>			
<b>Dover Saddlery/USEF Hunter Seat Medal</b>	3'6"	370	\$65
<b>ASPCA Maclay</b>	3'6"	371	\$65
<b>Platinum Performance USEF Talent Search 2*</b>	3'6"-3'9"	372	\$65
<b>WIHS Junior Medal</b> - Hunter Phase	3'6"	373	\$65
<b>WIHS Jumper Phase</b> - Jumper Phase	3'6"	473	\$65
<b>USEF Adult Medal</b>	3'3"	374	\$65
<b>WIHS Pony Medal</b>	2'3", 2'6", 2'9"	375	\$65
<b>Marshall+Sterling US Pony Medal</b>	2'3", 2'6", 2'9"	376	\$65
<b>NHS Hamel Foundation Medal</b>	3'3"	377	\$65
<b>IHSA/USHJA 3'3" Hunter Seat Medal</b>	3'3"	778	\$65
<b>EMO/USHJA Junior Jumping Seat Medal</b>	3'3"	378	\$65
<b>USHJA Adult Jumping Seat Medal</b>	3'3"	478	\$65
<b>USEF/NCEA Junior Hunter Seat Medal</b>	3'3"	379	\$65
<b>CPHA Junior Medal</b>	3'6"	474	\$65
<b>CPHA Senior Medal</b>	3'6"	475	\$65
<b>CPHA Foundation</b>	3'3"	476	\$65
<b>WCE Medal</b>	1.10m	477	\$65
<b>CPHA Style of Riding Medal</b>	1.0m	479	\$65
<b>The League Pre-Child/Adult 2' Medal</b>	2'	380	\$65
<b>The League/Pyranha Children's Medal</b>	3'	381	\$65
<b>The League Low Child/Adult Medal</b>	2'6"	382	\$65
<b>The League Children's Pony Medal</b>	2', 2'6"	383	\$65
<b>CPHA Child/Adult Horsemanship Medal</b>	2'6"	384	\$65
<b>PCHA Junior/Amateur Horsemanship</b>	2'9"	385	\$65
<b>Onondarka Medal</b>	3'	386	\$65
<b>CPHA Child/Adult Medal</b>	3'	390	\$65
<b>THIS National Children's Medal</b>	3'	391	\$65
<b>Ariat National Adult Medal</b>	3'	392	\$65
<b>THIS National Adult Medal</b>	3'	393	\$65
<b>PCHA Foxfield Medal - 18 &amp; Over</b>	3'3"	395	\$65
<b>PCHA Adult Medal 18-34</b>	3'3"	396	\$65
<b>PCHA Adult Medal 35 &amp; Over</b>	3'3"	397	\$65
<b>PCHA Horsemanship 14 &amp; Under</b>	3'3"	398	\$65



# DEL MAR NATIONAL

## Horse Show

# HITS DEL MAR NATIONAL HORSE SHOW **SPECIAL CLASSES - HUNTERS**

## HUNTER SPECIALS

CLASS	ENTRY FEE	POST ENTRY	SCRATCH FEE
<b>401. \$2,000 JUNIOR HUNTER CLASSIC 3'3" &amp; 3'6"</b> Designated first-round classic. Horse must have entered, shown and completed the course in two Junior Hunter classes over fences at the same show. Once the horse has competed in the first round class, the Classic may not be scratched.	\$175	\$10	\$10
<b>402. \$2,000 A-O HUNTER CLASSIC 3'3" &amp; 3'6"</b> Designated first-round classic. Horse must have entered, shown and completed the course in two A-O Hunter classes over fences at the same show. Once the horse has competed in the first round class, the Classic may not be scratched.	\$175	\$10	\$10
<b>403. \$500 PONY HUNTER CLASSIC</b> Designated first-round classic. Ponies must have entered, shown and completed the course in two Pony Hunter classes over fences at the same show. Once the horse has competed in the first round class, the Classic may not be scratched.	\$50	\$10	\$10
<b>404. \$1,000 THE LEAGUE/NAL/WIHS CHILD HUNTER CLASSIC - Horse</b>	\$100	\$10	\$10
<b>504. \$500 THE LEAGUE CHILD HUNTER CLASSIC - Pony</b> Designated first-round classic. Horse or pony must have entered and shown in two Children's Hunter classes over fences at the same show. Once the horse/pony has competed in the first round class, the Classic may not be scratched.	\$50	\$10	\$10
<b>405. \$1,000 THE LEAGUE/NAL/WIHS ADULT HUNTER CLASSIC</b> Designated first-round classic. Horse or pony must have entered and shown in two Adult Hunter classes over fences at the same show. Once the horse has competed in the first round class, the Classic may not be scratched.	\$100	\$10	\$10
<b>406. THE LEAGUE PRE-CHILD/ADULT 2' HUNTER CLASSIC</b> Designated first-round classic. Fences 2'. Riders must be juniors or amateurs. Horse or pony must have entered, shown and completed the course in two Pre-Child/Adult Hunter classes over fences at the same show. No cross entry of rider into any rated hunters. Exception: Low Child or Adult Hunter, USHJA Hunter up to 2'6".	\$50	\$10	\$10
<b>407. \$500 THE LEAGUE LOW CHILD/ADULT HUNTER CLASSIC</b> Designated first-round classic. Fences 2'6". Riders must be juniors or amateurs. Horse or pony must have entered, shown and completed the course in two Low Child or Adult Hunter classes over fences at the same show. No cross entry of rider into any rated hunters. Exception: Low Child or Adult Hunter, USHJA Hunter up to 2'6".	\$50	\$10	\$10
<b>HUNTER CLASSICS:</b> Exhibitors must enter the classic prior to the start of the first round class. Scratches are not permitted after the first round class has begun. See the time Schedule for the designated first round class. Horses must have entered, shown, and completed the course in at least two of the respective hunter division classes over fences at this show. To be judged on performance and soundness, suitability and manners to count. To be scored under the open numerical judging system. To be shown over a course of approximately 10 jumps of height designated by the qualifying division. The twelve horses with the highest scores from the first round will return to jump a second round over a different course. In the event of equality in the first round, all equal scores will return for the second round. Scores will be combined from the first round with the second round to determine overall winners.			
<b>627. \$1,000 SURFSIDE 2'9" HUNTER DERBY</b> Hunt & Go format. Fences 2'9". No Cross entry of Horse/Rider Combination into Class 628. Open to Professionals, Junior and Amateur riders on Horses and Ponies. Horse/pony must have entered in two classes over fences at the same show. No cross entry of rider into any class with fences 3'3" or higher. If entries warrant, management may elect to split Pro / Non-Pro.	\$100	\$10	\$10
<b>628. \$500 THE LEAGUE TINY BIT O' HUNTER DERBY 2'</b> Hunt & Go format. Fences 2' with options to 2'4". No Cross entry of Horse/Rider Combination into Class 627 or 629. Open to Junior and Amateur riders on Horses and Ponies. Horse/pony must have entered in two classes over fences at the same show. No cross entry of rider into any class with fences 3' or higher.	\$75	\$10	\$10
<b>629. \$750 THE LEAGUE BIT O' STRAW HUNTER DERBY 2'6"</b> Hunt & Go format. Fences 2'6" with options to 2'10". No Cross entry of Horse/Rider Combination into Class 628. Open to Junior and Amateur riders on Horses and Ponies. Horse/pony must have entered in two classes over fences at the same show. No cross entry of rider into any class with fences 3' or higher.	\$100	\$10	\$10
<b>600. \$20,000 USHJA INTERNATIONAL HUNTER DERBY</b> <i>presented by Great American Insurance Group</i> Hunt & Go format. Fences 3'6"-3'9", with 4' to 4'6" option. Riders limited to four (4) horses in this class. Horses are not required to show in any other class at the show. A Mandatory Riders meeting will be held prior to the class. See detailed specs on the following pages or visit USHJA.org. Horses may only compete in one USHJA Derby.	\$450+\$50 USHJA	\$25	\$50
<b>603. \$1,500 USHJA PONY HUNTER DERBY</b> Hunt & Go format. Fences 2'3" for small, 2'6" for Medium and 2'9"-3' for Large Ponies. See details on the following page.	\$175+\$35 USHJA	\$25	\$50
<b>630. \$10,000 USHJA NATIONAL HUNTER DERBY</b> <i>presented by The Inn at Rancho Santa Fe</i> Two-Round derby. Fences 3' with 3'5" options. Open to horses ridden by Professionals, Juniors or Amateurs. Riders are not limited to the number of horses they may ride. See detailed specs on the following pages or visit USHJA.org. Horses may only compete in one USHJA Derby.	\$350+\$35 USHJA	\$25	\$50
<b>631. \$10,000 USHJA JUNIOR/AMATEUR NATIONAL HUNTER DERBY</b> Two-Round derby. Fences 3' with 3'5" options. Open to horses ridden by Juniors or Amateurs. Riders are not limited to the number of horses they may ride. See detailed specs on the following pages or visit USHJA.org. Horses may only compete in one USHJA Derby.	\$350+\$35 USHJA	\$25	\$50
<b>632. \$1,000 USHJA GREEN HUNTER INCENTIVE 3' &amp; 3'3"</b>	\$80+\$20 USHJA	\$10	\$10
<b>732. \$1,000 USHJA GREEN HUNTER INCENTIVE 3'6" &amp; 3'9"</b> To be held as an overlay with specified classes of the Green Hunter 3', 3'3", 3'6" and 3'9" and Conformation sections. See Class schedule for overlay classes.	\$80+\$20 USHJA	\$10	\$10
<b>633. \$500 CPHA GREEN HUNTER INCENTIVE 3' &amp; 3'3"</b>	\$50	\$10	\$10
<b>733. \$500 CPHA GREEN HUNTER INCENTIVE 3'6" &amp; 3'9"</b> To be held as an overlay with specified classes of the Green Hunter 3', 3'3", 3'6" and 3'9" and Conformation sections. See Class schedule for overlay classes. Horses must be enrolled, please visit cpha.org for more information.	\$50	\$10	\$10
<b>634. \$1,000 YOUNG HUNTER CLASSIC</b> Designated first-round classic. Fences 2'9", 3', 3'3". Horse must compete in the Young Hunter 5, 6, or 7 Year Old Hunters to be eligible.	\$100	\$10	\$10

**GROOMS AWARD:** A bonus check of \$250 will be awarded to the groom of the winning horse in the USHJA International Hunter Derby and the USHJA National Hunter Derby (open section). The winner will be presented a certificate and must redeem it in the show office by the conclusion of the show.

**THE SAKS STYLE OF RIDING AWARD:** To be presented to one competitor from the Amateur-Owner Hunter or Adult Hunter divisions. Selected by HITS judges, the Award recognizes the rider who best exemplifies excellence, horsemanship, and passion for the sport.



# HITS DEL MAR NATIONAL HORSE SHOW **SPECIAL CLASSES - JUMPERS**

## JUMPER SPECIALS

CLASS	ENTRY FEE	POST ENTRY	SCRATCH FEE
<b>508. \$500 THE LEAGUE ITTY BITTY JR/AM .70m JUMPER CLASSIC</b> Table II.2.b., .70m. Horse/Rider combination must have entered in at least one other Jr/Am .70m class at the same show and MAY NOT show in any class with fences .90m or higher at the same show. Horse/Rider Combination may Compete in one in one Classic.	\$75	\$25	\$50
<b>408. \$1,000 THE LEAGUE JR/AM .80m JUMPER CLASSIC</b> Table II.2.b., .80m. The horse must have entered in at least one other Jr/Am .80m class at the same show. Rider MAY NOT show in any other class with fences 1.0m or higher at the same show. Horse/Rider Combination may Compete in one Classic.	\$100	\$25	\$50
<b>409. \$1,000 THE LEAGUE JR/AM .90m JUMPER CLASSIC</b> Table II.2.b., .90m. The horse must have entered in at least one other Jr/Am .90m class at the same show. Rider MAY NOT show in any other class with fences 1.10m or higher at the same show. Does not count for Zone Points. Horse/Rider Combination may Compete in one Classic.	\$100	\$25	\$50
<b>410. \$1,000 THE LEAGUE JR/AM 1.05m JUMPER CLASSIC</b> Table II.2.b., 1.0-1.05m. The horse must have entered in at least one other Jr/Am .90m-1.0m Jumper class at the same show. Horse/Rider Combination may only compete in one Classic at the same show. See Zone Specs.	\$100	\$25	\$50
<b>411. \$4,000 MARY'S TACK &amp; FEED/THE LEAGUE/NAL/WIHS JR/AM 1.15m JUMPER CLASSIC</b> Table II.2.b., 1.10m-1.15m. The horse must have entered in at least one other Jr/Am 1.0m-1.10m Jumper class at the same show. Horse/Rider Combination may only compete in one Classic at the same show. See Zone Specs.	\$250	\$25	\$50
<b>412. \$2,500 PYRANHA/NAL JR/AM 1.25m JUMPER CLASSIC</b> Table II.2.b. 1.20m-1.25m. The horse must have entered in at least one other Junior or Amateur 1.20m or 1.30m Jumper class at the same show. The horse/rider combination may only compete in one Classic at the same show.	\$200	\$25	\$50
<b>413. \$3,500 NAL JR/AM 1.35m JUMPER CLASSIC</b> Table II.2.a. 1.30m-1.35m. The horse must have entered in at least one other Junior or Amateur, 1.20m-1.40m Jumper class at the same show. The horse/rider combination may only compete in one Classic at the same show.	\$225	\$25	\$50
<b>414. \$3,500 CWD JR/AM 1.45m JUMPER CLASSIC</b> Table II.2.a. 1.40m-1.45m. The horse must have entered at least one other Junior/Amateur 1.20m-1.40m Jumper class at the same show. The horse/rider combination may only compete in one Classic at the same show.	\$225	\$25	\$50
<b>750. \$5,000 DEL MAR NATIONAL POWER &amp; SPEED - 1.35m-1.40m</b> Table II.2.d. 1.35m-1.40m. Two Phase, Power & Speed.	\$325	\$25	\$50
<b>415. \$30,000 ALLIANT PRIVATE CLIENT CUP</b> Table II.2.a. American Standard. Time first Jump-off. 24-Hour Rule in effect.	\$550	\$25	\$50
<b>425. \$1,000 U25 JUMPER CLASSIC</b> To be held concurrently with the class 415; Open to riders from the beginning of the calendar year in which they reach the age of 16 until the end of the calendar year in which they reach the age of 25, Amateur classification is not a factor for entry. Riders must be entered in class 415 to be eligible. USEF JP 119 for further information. Prize money paid to 6th.	\$100	\$25	\$50
<b>416. \$20,000 HITS OPEN WELCOME - 1.40m</b> Table II.2.b. 1.40m. Open to Nominated Jumpers.	\$425	\$25	\$50
<b>417. \$15,000 STX OPEN SPEED - 1.35m</b> Table III. 1.35m. Open to Nominated Jumpers.	\$400	\$25	\$50
<b>418. \$24,500 HORSEFLIGHT JUMPER CLASSIC - 1.35m</b> Table II.2.a. 1.35m. Time First Jump Off.	\$500	\$25	\$50
<b>419. \$5,000 1.20m JUMPER CLASSIC</b> Table II.2.b. 1.20m. Time First Jump Off.	\$325	\$25	\$50
<b>420. \$80,000 GRAND PRIX OF DEL MAR</b> <i>presented by Core Specialty Insurance</i> Table II.2.a. National Standard. Time first Jump-off. 24-Hour Rule in effect. Please visit Ryegate.com/USEF.php Upcoming Classes to determine which classes will be included in the Rolex Computer Ranking List.	\$1200	\$50	\$100

**GROOM'S AWARD:** A bonus check of \$500 will be awarded to the groom of the winning horse in the Grand Prix of Del Mar. The winner will be presented a certificate and must redeem it in the show office by the conclusion of the show.

**STX NATIONAL LEADING RIDER:** New in 2025, STX is offering a National Leading Rider Award. Based on cumulative points collected in the STX Open Speed during the 2025 season at any HITS show between December 1, 2024 & August 31, 2025. To be awarded at Hudson Valley VIII. Points will be awarded weekly to the top six placings in the STX Open Speed. Standard Championship Points will be used - 10-6-4-2-1- .5. Riders placing on multiple horses will receive points from all results. Should any tie occur overall, the award will be given to the rider with the most firsts & seconds.

**The 2025 STX Del Mar Circuit Champion will be awarded an STX Tack Trunk!**



# HITS

Whether you are competing at **HITS Chicago**, **HITS Culpeper**, **HITS Del Mar**, **HITS Hudson Valley**, **HITS Ocala**, or **HITS Vermont**, HITS offers premier opportunities for horses and riders of all levels.



## STX OPEN SPEED SERIES

For the second year, the STX Open Speed Series, is a faults-converted speed class open to juniors, amateurs, and professionals, which takes place weekly during every HITS circuit.

Each circuit champion receives an STX Tack Box, while the 2025 STX National Leading Rider will be awarded a six-month lease on an STX 2-Horse.

## CLIPMYHORSE.TV HUNTER CLASSIC SERIES

The one-of-a-kind \$250,000 ClipMyHorse.tv Hunter Classic Final, which takes place at HITS Hudson Valley during HITS Championship week in September, draws some of the country's top hunter competitors to tackle a single classic hunter trip overseen by three judging panels, one of which bases their marks on the ClipMyHorse.tv Livestream.

New this year, the series now includes six \$5,000 ClipMyHorse.tv Hunter Classic Qualifiers, with three classes at HITS Ocala, as well as one chance at HITS Del Mar, and two more at HITS Hudson Valley.

In addition to the many unique initiatives, HITS is proud to host several elite offerings, including:

- 8 weeks WCHR Competition
- 10 USHJA International Hunter Derbies, *presented by Great American Insurance Group*
- USEF Junior Hunter National Championships – West & the Gladstone Cup Equitation Classic
- 6 weeks FEI Show Jumping
- 3 weeks CDI Dressage
- U.S. Dressage Festival of Champions



## HITS DEL MAR NATIONAL HORSE SHOW **PERPETUAL TROPHIES**

TROPHY	DESCRIPTION	2024 RECIPIENTS: HORSE / OWNER / RIDER
Ain't Misbehavin Perpetual Trophy	Champion Junior Hunter Classic	Cayman / Violet Tatum / Bridgeport Farms LLC
Budweiser Perpetual Trophy	Champion Pony Hunter Classic	Smallwood Mystic / Kathryn Padilla / Highland Farm LLC
Calgary Challenge Trophy	Champion High Point Junior Hunter- 17/U	Cayman / Violet Tatum / Bridgeport Farms LLC
Cherum Farm "Tinker Toy" Perpetual Trophy	Overall Grand Champion Pony Hunter	Heavenly Patch of Blue / Kathryn Padilla / Highland Farm LLC
Couldn't Resist Perpetual Trophy	Grand Champion Green Working Hunter 3'6" or 3'9"	Saint / Tara Metzner / Davlyn Farms
CTBA Perpetual Trophy	Conformation Hunter Model	N/A
Cunningham Perpetual Trophy	Show Champion Conformation Hunter	N/A
Darlene Van Ort Perpetual Trophy	Overall High Point Junior Hunt Seat Rider 15/U	Brooke O'Malley
DMNHS Perpetual Trophy	Open Equitation Championship	N/A
Emmett Kelly Challenge Trophy	High Performance Handy Hunter	N/A
Eric Atterbury Perpetual Trophy	Overall High Point Junior Hunt Seat Rider 15-17	Nicole Buie
Ewart Goodwin Perpetual Trophy	Show Champion Junior Jumper	Elicole / Nicole Buie / Fairbanks Valley Farms, LLC
Fred Simms Perpetual Trophy	Open Jumper	Daido Van 'T Ruytershof Z / James Chawke
Governor's Cup Perpetual Trophy	Grand Prix of Del Mar	Nacara Van Berkenbroeck Z / James Chawke / Alison Locke
Grand Prix Style of Riding Perpetual Trophy	Grand Prix of Del Mar	Cassio Rivetti
Hai Karate Perpetual Trophy	Grand Prix of Del Mar	Nacara Van Berkenbroeck Z / James Chawke / Alison Locke
Harry Forbes Sportsmanship Award Trophy	Sportsmanship Award	Lori De Rosa
John Quirk Memorial Trophy	Show Champion Open Jumper	Ilan / Kaitlin Campbell / SWS Training & Sales
Luc Perpetual Trophy	Show Champion Green Conformation Hunter	East End / Mitch Endicott / Kristyn Hill
Marion Light Perpetual Trophy	Show Champion Junior Hunter-Riders 12/U	N/A
No Commotion Perpetual Trophy	High Performance Handy Hunter	N/A
Old Oak Challenge Trophy	Overall High Point Junior Hunt Seat Rider 17/U	Nicole Buie
Overseas Perpetual Trophy	Amateur Owner Classic	Coconut Grove / Irene Neuwirth
Peppertree Farms Style of Riding Trophy	Junior /Amateur 1.40m Jumper	Escapado S / Ian MacFarlane
Pep Talk Perpetual Trophy	Grand Champion Amateur/Owner Hunter	Celebration / Chelsea Wilkinson Mains
Petrus Perpetual Trophy	Overall High Point Small Junior Hunter 17/U	Sincerely / Presley Wade / Wade Equestrian Farms, LLC
Santa Anita Perpetual Trophy	Leading Open Jumper Rider	Savannah Jade Jenkins
Showdown Perpetual Trophy	High Performance Conf. Handy Hunter	N/A
SO. CA. Expo-R.Victor Venberg Co. Trophy	English Pleasure/Jr Hunter Under Saddle	Dauphin / Lakshmi Jeyanandarajan / AE Farm
Stash The Cash Perpetual Trophy	Show Champion Junior Hunter-Riders 13-15	Violet Tatum
War Bride Challenge Trophy	Highest Placing Jr/Am 1.40m Jumper 17/U	Nicole Buie
Whitney Todd Perpetual Trophy	Show Champion-High Performance Hunter	N/A
William R "Doc" Nissen Perpetual Trophy	Champion Jr/Am Grand Prix at Del Mar	N/A
Zellerbach Perpetual Trophy	Highest Placing Jr/Am Jumper 17/U	Nicole Buie

## SPECIAL CLASS PRIZE MONEY **BREAKDOWN**

	1	2	3	4	5	6	7	8	9	10	11	12	
<b>\$250</b>	\$75	\$60	\$40	\$30	\$25	\$20							
<b>\$500</b>	\$150	\$110	\$75	\$60	\$55	\$50							
<b>\$750</b>	\$200	\$150	\$100	\$70	\$65	\$60	\$55	\$50					Hunter Derby
<b>\$1,000</b>	\$300	\$220	\$150	\$100	\$80	\$60	\$50	\$40					Hunter
<b>\$1,000</b>	\$300	\$200	\$160	\$130	\$110	\$100							Jumper
<b>\$1,000</b>	\$300	\$220	\$130	\$80	\$60	\$50	\$40	\$30	\$30	\$20	\$20	\$20	Green Incentive
<b>\$1,500</b>	\$450	\$330	\$195	\$120	\$90	\$75	\$60	\$45	\$45	\$30	\$30	\$30	USHJA Derby
<b>\$2,000</b>	\$460	\$330	\$260	\$220	\$200	\$180	\$175	\$175					
<b>\$2,500</b>	\$700	\$400	\$300	\$250	\$225	\$225	\$200	\$200					
<b>\$3,500</b>	\$1,050	\$650	\$450	\$350	\$275	\$275	\$225	\$225					
<b>\$4,000</b>	\$1,200	\$800	\$520	\$360	\$320	\$280	\$260	\$260					
<b>\$5,000</b>	\$1,500	\$1,000	\$650	\$450	\$400	\$350	\$325	\$325					Jumper
<b>\$5,000</b>	\$1,500	\$1,100	\$650	\$400	\$300	\$250	\$200	\$150	\$150	\$100	\$100	\$100	USHJA Derby
<b>\$10,000</b>	\$2,800	\$1,800	\$1,250	\$900	\$800	\$700	\$550	\$450	\$375	\$375			
<b>\$10,000</b>	\$3,000	\$2,200	\$1,300	\$800	\$600	\$500	\$400	\$300	\$300	\$200	\$200	\$200	USHJA Derby
<b>\$15,000</b>	\$4,350	\$3,150	\$2,100	\$1,400	\$1,100	\$800	\$650	\$550	\$450	\$450			
<b>\$20,000</b>	\$5,600	\$3,600	\$2,500	\$1,800	\$1,600	\$1,400	\$1,200	\$900	\$700	\$700			
<b>\$20,000</b>	\$6,000	\$4,400	\$2,600	\$1,600	\$1,200	\$1,000	\$800	\$600	\$600	\$400	\$400	\$400	USHJA Derby
<b>\$24,500</b>	\$7,350	\$5,390	\$3,185	\$1,960	\$1,470	\$1,225	\$970	\$725	\$725	\$500	\$500	\$500	
<b>\$25,000</b>	\$7,500	\$5,500	\$3,250	\$2,000	\$1,500	\$1,250	\$1,000	\$750	\$750	\$500	\$500	\$500	
<b>\$30,000</b>	\$9,000	\$6,600	\$3,900	\$2,400	\$1,800	\$1,500	\$1,200	\$900	\$800	\$800	\$550	\$550	
<b>\$80,000</b>	\$24,000	\$17,600	\$10,400	\$6,400	\$4,800	\$4,000	\$3,200	\$2,400	\$2,400	\$1,600	\$1,600	\$1,600	



# WAIVER AND RELEASE OF LIABILITY, ASSUMPTION OF RISK AND INDEMNITY AGREEMENT

For and in consideration of United States Equestrian Federation, Inc. dba US Equestrian ("USEF") allowing me, the undersigned, to participate in any capacity (including as a rider, driver, handler, vaulter, longeur, lessee, owner, agent, coach, official, trainer or volunteer) in a USEF sanctioned, licensed or approved event or activity, including but not limited to equestrian clinics, practices, shows, competitions and related or incidental activities and  
HITS DEL MAR ("USEF Event" or "USEF Events"); I, for myself, and on behalf of my spouse, children, heirs and next of kin, and any legal and personal representatives, executors, administrators, successors,, and assigns, hereby agree to and make the following contractual representations pursuant to this Agreement (the "Agreement"):

A. RULES AND REGULATIONS: I hereby agree that I have read, understand, and agree to be bound by all applicable Federation Bylaws, rules, and policies including the USEF Safe Sport Policy and Minor Athlete Abuse Prevention Policies (MAAPP) as published at [www.usef.org](http://www.usef.org), as amended from time to time.

B. ACKNOWLEDGMENT OF RISK: I knowingly, willingly, and voluntarily acknowledge the inherent risks associated with the sport of equestrian and know that horseback riding and related equestrian activities are inherently dangerous, and that participation in any USEF Event involves risks and dangers including, without limitation, the potential for serious bodily injury (including broken bones, head or neck injuries), sickness and disease (including communicable diseases), trauma, pain & suffering, permanent disability, paralysis and death; loss of or damage to personal property (including my mount & equipment) arising out of the unpredictable behavior of horses; exposure to extreme conditions and circumstances; accidents involving other participants, event staff, volunteers or spectators; contact or collision with other participants and horses, natural or manmade objects; adverse weather conditions; facilities issues and premises conditions; failure of protective equipment (including helmets); inadequate safety measures; participants of varying skill levels; situations beyond the immediate control of the USEF Event organizers and competition management; and other undefined, not readily foreseeable and presently unknown risks and dangers ("Risks").

## EQUINE ACTIVITY LIABILITY ACT WARNING:

CAUTION: HORSEBACK RIDING AND EQUINE ACTIVITIES CAN BE DANGEROUS. RIDE AT YOUR OWN RISK.

**Under the laws of most States, an equine activity sponsor or equine professional is not liable for any injury to, or the death of, a participant in equine activities resulting from the inherent risks of equine activities.**

C. ASSUMPTION OF RISK: I understand that the aforementioned Risks may be caused in whole or in part or result directly or indirectly from the negligence of my own actions or inactions, the actions or inactions of others participating in the USEF Events, or the negligent acts or omissions of the Released Parties defined below, and I hereby voluntarily and knowingly assume all such Risks and responsibility for any damages, liabilities, losses, or expenses that I incur as a result of my participation in any USEF Events. I also agree to be responsible for any injury or damage caused by me, my horse, my employees or contractors under my direction and control at any USEF Event.

D. WAIVER AND RELEASE OF LIABILITY, HOLD HARMLESS AND INDEMNITY: In conjunction with my participation in any USEF Event, I hereby release, waive and covenant not to sue, and further agree to indemnify, defend and hold harmless the following parties: USEF, USEF Recognized Affiliate Associations, the United States Olympic & Paralympic Committee (USOPC), USEF clubs, members, Event participants (including athletes/riders, coaches, trainers, judges/officials, and other personnel), the Event owner, licensee, and competition managers; the promoters, sponsors, or advertisers of any USEF Event; any charity or other beneficiary which may benefit from the USEF Event; the owners, managers, or lessors of any facilities or premises where a USEF Event may be held; and all directors, officers, employees, agents, contractors, and volunteers of any of the aforementioned parties (**Individually and Collectively, the "Released Parties" or "Event Organizers"**), with respect to any liability, claim(s), demand(s), cause(s) of action, damage(s), loss, or expense (including court costs and reasonable attorney fees) of any kind or nature ("**Liability**") which may arise out of, result from, or relate in any way to my participation in the USEF Events, including claims for Liability caused in whole or in part by the negligent acts or omissions of the Released Parties.

E. COMPLETE AGREEMENT AND SEVERABILITY CLAUSE: This Agreement represents the complete understanding between the parties regarding these issues and no oral representations, statements or inducements have been made apart from this Agreement. If any provision of this Agreement is held to be unlawful, void, or for any reason unenforceable, then that provision shall be deemed severable from this Agreement and shall not affect the validity and enforceability of any remaining provisions.

**I HAVE CAREFULLY READ THIS DOCUMENT IN ITS ENTIRETY, UNDERSTAND ALL OF ITS TERMS AND CONDITIONS, AND KNOW IT CONTAINS AN ASSUMPTION OF RISK, RELEASE AND WAIVER FROM LIABILITY, AS WELL AS A HOLD HARMLESS AND INDEMNIFICATION OBLIGATIONS.**

By signing below, I (as the participant or as the Parent/Legal Guardian of the minor identified below) hereby accept and agree to the terms and conditions of this Agreement in connection with my (or the minor's) participation in any USEF Event. If, despite this Agreement, I, or anyone on my behalf or the minor's behalf, makes a claim for Liability against any of the Released Parties, I will indemnify, defend and hold harmless each of the Released Parties from any such Liabilities as the result of such claim.

**The parties agree that this agreement may be electronically signed. The parties agree that the electronic signatures appearing on this agreement are the same as handwritten signatures for the purposes of validity, enforceability, and admissibility.**

☐ RIDER/DRIVER/HANDLER/VAULTER/LONGEUR ☐ OWNER ☐ TRAINER ☐ OFFICIAL ☐ STAFF ☐ VOLUNTEER ☐ COACH (IF APPLICABLE)

Signature: \_\_\_\_\_ Date: \_\_\_\_\_ Print Name: \_\_\_\_\_

Parent/Guardian Signature: (Required if Rider/Driver/Handler/Vaulter/Longeur is a minor) \_\_\_\_\_ Date: \_\_\_\_\_

Print Parent//Guardian Name: \_\_\_\_\_ Emergency Contact Phone No. \_\_\_\_\_

## USHJA HUNTER PROGRAM SPECIFICATIONS

**USHJA NATIONAL HUNTER DERBY** - Hunt & Go Format. Open to horses and ponies ridden by Professional, Junior or Amateur riders. There is no limit to the number of horses a rider may ride. Fences 3'-3'3" in Height, with four "option" fences in round set at 3'5". The Classic Hunter Round, consisting of five to seven (5-7) fences with two (2) high options, shall be judged on quality, movement, jumping style, manners and way of going. The Handy Hunter Round, consisting of five to seven (5-7) with two (2) high options, shall be judged on quality, movement, jumping style, manners and way of going. Pace, brilliance, and a shorter track are to be rewarded. One Bonus Point will be added to base score for each higher "option" fence jumped. Each judge will be designated either the Classic Hunter Phase or the Handy Hunter Phase. The scores from each judge will be added together to determine the total score and placement. Trophy, Ribbons and Prize Money 1-12. The horse cannot cross enter into any other USHJA Hunter Derby.

**USHJA JUNIOR/AMATEUR NATIONAL HUNTER DERBY** - Hunt & Go Format. Open to horses and ponies ridden by Junior or Amateur riders. There is no limit to the number of horses a rider may ride. Horse/Rider combination may not cross enter into the USHJA Open Derby. Fences 3'-3'3" in Height, with four "option" fences in round set at 3'5". The Classic Hunter Round, consisting of five to seven (5-7) fences with two (2) high options, shall be judged on quality, movement, jumping style, manners and way of going. The Handy Hunter Round, consisting of five to seven (5-7) with two (2) high options, shall be judged on quality, movement, jumping style, manners and way of going. Pace, brilliance, and a shorter track are to be rewarded. One Bonus Point will be added to base score for each higher "option" fence jumped. Each judge will be designated either the Classic Hunter Phase or the Handy Hunter Phase. The scores from each judge will be added together to determine the total score and placement. Trophy, Ribbons and Prize Money 1-12. The horse cannot cross enter into any other USHJA Hunter Derby.

**USHJA PONY HUNTER DERBY** - Hunt & Go Format. Open to ponies ridden by Junior riders, see HJ101.8 for current Federation policy. Riders may compete on a total of four ponies, but no more than two ponies of any one size. Classic Hunter Style Round and Handy Hunter Round. Fences 2'3" for small, 2'6" for Medium and 2'9"-3' for Large Ponies. The Classic Hunter Round, consisting of five to seven (5-7) fences with two (2) high options, shall be judged on quality, movement, jumping style, manners and way of going. The Handy Hunter Round, consisting of five to seven (5-7) with two (2) high options, shall be judged on quality, movement, jumping style, manners and way of going. Pace, brilliance, and a shorter track are to be rewarded. One Bonus Point will be added to base score for each higher "option" fence jumped. Each judge will be designated either the Classic Hunter Phase or the Handy Hunter Phase. The scores from each judge will be added together to determine the total score and placement. Trophy, Ribbons and Prize Money 1-12.

**USHJA INTERNATIONAL HUNTER DERBY** - Open to all. Riders are limited to four (4) horses in this class. Horses are not required to show in any other class at the competition, but may compete in any class for which they are otherwise eligible. Owners, Riders and Trainers must be current Active Competing Members of USEF and USHJA. Horses must have USEF Recording and USHJA Registration. All horses must be enrolled or pay a non-enrolled horse fee of \$150 to participate in any USHJA IHD class. There is no limit to the number of non-enrollment fees. Any non-enrolled horse fees paid will not be credited towards an enrollment fee for the current competition year. The horse cannot cross enter into any other USHJA Hunter Derby.

**CONDITIONS & SPECIFICATIONS** - Fences 3'6"-4', with at least four (4) option fences 4'3" or higher per round. To be judged under the Open Numerical scoring system by two panels of one judge each. One Panel will be designated the tie-breaking panel for Round 1; this panel will also be the tie-breaking panel for the jump-off, if any. The other Panel will be the tie-breaking panel for Round 2. To be scored on quality, movement, jumping style, manners and way of going. Pace and brilliance are to be rewarded. Jumping decorations to utilize a shorter track is not permissible in any round.

**HUNT & GO FORMAT** - Consists of two phases, one Classic Hunter Round and one Handy Hunter Round jumped consecutively. All participants will complete both the Classic and the Handy portions even if penalties (rails, re-fusals, etc.) are incurred. Major penalties (falls, 3 refusals total across both phases, off-course, etc.) will result in elimination.

1. The Classic Hunter Round, consisting of 7-8 fences with 2 high options, shall be judged on quality, movement, jumping style, manners and way of going.
2. After the completion of the classic round, horses will pass through a set of markers to begin their handy portion of the class. The Handy Hunter Round, consisting of 5-8 fences with 2 high options, shall be judged on jumping style and efficiency while maintaining style and form, way of going, and overall flow. A horse/rider may not jump decorations or other obstacles in order to create a shorter track.
3. Each panel (or each judge if two judges are used) will be designated either the Classic Hunter Phase or the Handy Hunter Phase. Each will provide a single score for their designated phase, in addition to the Bonus points of one point per high option jump that will be added to each judge's score. The scores from each judge will be added together to determine the total score and placement.
4. The Option Bonus Score of one additional point for each higher height option fence jumped must be awarded even if there is a refusal, rail down or loss of good jumping style at that higher height option fence, providing that the horse- and-rider combination does jump the higher height option fence.

**POINTS & AWARDS** - In order to earn USEF Horse of the Year points, exhibitors must declare in which section points are to count by submitting a completed USHJA Declaration Form to the Show Office by the end of the competition. Only Juniors and Amateurs may declare for the applicable Junior or Amateur-Owner section. In order to earn points toward IHD Awards and Finals, horses must be enrolled in the International Hunter Derby program.

**ORDER OF GO** - The Order of Go for the First Round will be drawn.

**ATTIRE** - Formal attire required. Buff breeches and shad belly, white breeches and dark or scarlet coat, hunt colors coat or official sponsor or team jacket permitted.

**RIBBONS & AWARDS** - Ribbons 1-12 for First Round, Second Round and Overall. Visit [USHJA.org](http://USHJA.org) for complete specifications.





DEL MAR NATIONAL HORSE SHOW - 2024





# YOU ARE NOT ALONE



US Equestrian wants you to know: if you are a victim or survivor of sexual abuse or suspect abuse of any kind, there are resources and people to help.

## REPORT

833-5US-SAFE or [uscenterforsafesport.org/report-a-concern](https://uscenterforsafesport.org/report-a-concern)

## 24/7 HELPLINE

866-200-0796 or visit [safesporthelpline.org](https://safesporthelpline.org)

## TRAINING & RESOURCES

Free to US Equestrian members at [usef.org/safesport](https://usef.org/safesport).

#youarenotalone



All USEF Life and Senior Active members, as well as participants who have regular contact with minor athletes, are required to comply with the U.S. Center for SafeSport training requirement to be eligible to participate in the competition. All participants must adhere to the U.S. Center for SafeSport Code, USEF Safe Sport Policy, and the Minor Athlete Abuse Prevention Policies. More information about these can be found at [USEF.org](https://USEF.org).



## DEL MAR NATIONAL HORSE SHOW - 2024





# CONDITIONS & SPECIFICATIONS

## GENERAL

**Poling:** Manual poling, or the use of offsets, is prohibited on competition grounds. Per USEF GR843.

**The League presented by Marshall+Sterling Insurance Group Membership:** League membership is required for points to count for Classics and Classes that are affiliated with the The League presented by Marshall+Sterling Insurance.

**Websites:** For additional Rules, Regulations and Specifications, visit these websites:

**HITS** [HITSShows.com](http://HITSShows.com)      **USEF** [USEF.org](http://USEF.org)      **The League** [HITSShows.com](http://HITSShows.com)      **USHJA** [USHJA.org](http://USHJA.org)      **CPHA** [CPHA.org](http://CPHA.org)

**Show Weeks May Close:** Exhibitors are advised that some show weeks may sell out. After the Closing Date of Entries, priority is given to exhibitors who enter two or more show weeks.

**Awards:** Ribbons will be awarded to eighth place in all Hunter and Jumper Classes unless otherwise noted. Prize Money is awarded to Sixth place in Hunter classes and to Sixth or Eighth place in Jumper classes. For Special Classes and Classics, see Prize Money Distribution on following pages.

**International Riders:** All classes held during the 2025 Del Mar National Horse Show will be run under National rules with regard to riders. If the capacity of International riders exceeds the National riders rule, riders will be accepted on a First come, First served basis. All International Riders must have an active, competing USEF Membership as well as having completed SafeSport Training for Riders 18 and Older.

**HJ106.2:** All horses regardless of show or non-showing are required to submit an entry with the Horse Show Office and wear or display the back number at all times. Any horse without a back number or with an incorrect back number will be asked to leave the area.

**Longeing:** Horses must be longed in the official longeing area only. All horses must wear, or be accompanied with a visible entry number. No chasing, whip cracking, or plastic bags on whips. Stirrups may not hang from the saddle while longeing. Dangerous horses will not be permitted, and will be asked to leave. No phones or radios.

## HUNTERS

**Jog:** Jogging will be conducted under HU118.3, Option A: Horses/ponies are required to trot a circle on a loose rein at the end of each over fences performance. Horses/ponies may be asked to return to the ring and trot another circle at the judge's discretion. The following sections will not jog: Children's, Adult, Low Children's, Low Adult, Schooling, Baby Green, Young, Thoroughbred Hunter, Modified Junior/Amateur, Pre-Children's/Adult, Short Stirrup, Long Stirrup, Schooling Pony, Green Schooling Pony & all other miscellaneous classes..

**Warm-Up:** Ticketed warm-up schedule will be posted in the Show Office. Tickets are \$50 each and will be billed to the back number worn at the ring.

**Schooling** is prohibited in the show rings.

**24-Hour Stabling Rule:** Any class of \$25,000 or more will be subject to the USEF 24-Hour Stabling Rule. Horses must purchase a stall directly from the show and reside in the stall on the official Showgrounds of HITS Del Mar Show Park for the 24-Hour period leading up to and during the class.

**2025 Zone 10 Specifications:** (Check USHJA.org for the most updated specs.)

- **Adult Amateur Hunter:** Riders may not cross enter into any Green Hunter 3'6", Green Hunter 3'9" or High Performance Hunter class at the same competition. Exception - under saddle classes. Adult Amateur Riders may not cross enter into any class at the same competition with fences exceeding 3'3" except Jumper Classes not exceeding 1.25m, Equitation and Medal Classes, and the USHJA National Hunter Derby. Riders may cross enter between the Adult Amateur Hunter and the Amateur Owner section if the rider owns the horse he or she is showing in the Adult Amateur section. Horses may not cross enter into any Amateur Owner hunter class (at the same show).
- **Adult Amateur Hunter Low:** Open to Adult Amateurs showing horses and/or ponies. Riders may not cross enter into any class or section at the same competition where fences exceed 3'0" .
- **Children's Hunter:** Riders may not cross enter into any Junior Hunter, Green Hunter 3'6", Green Hunter 3'9" or High Performance Hunter class at the same show. Exception - under saddle classes. Children's riders may not cross enter into any class at the same competition with fences exceeding 3'3" (exception: Jumper Classes not exceeding 1.25m, Equitation and Medal Classes, and the USHJA National Hunter Derby). A Children's Hunter rider may ride a Junior Hunter in the Junior Hunter Under Saddle class for a Junior Hunter rider that has more than one horse entered. No cross entry restrictions at one-day competitions. Horses may not cross enter into any 3'6" Junior Hunter Class at the same competition.
- **Children's Hunter Low:** Open to junior riders showing horses. Riders may not cross enter into any class or section at the same competition where fences exceed 3'0" .
- **Children's Hunter Pony:** Open to junior riders showing ponies. Rider age restrictions as found in "Regular Pony" sections do not apply. If showing in the Regular or Green Pony Hunter section, riders may ride only one pony at 2' or one pony at 2'6" at the same show. Riders may not cross enter into any class where fences exceed 3'3". Exception: Pony Jumpers. The Pony, with another rider, may cross enter into any class where otherwise eligible. Fences 2' small and medium, 2'6" large. No Combinations.
- **General (Hunters):** Horses/ponies are not required to be jogged for soundness. To be judged on performance, soundness and suitability to count.

## JUMPERS

**Nomination 2** - \$100 (1.15m and below)

**Jumper Sections:** .70m - 1.15m, Junior, Amateur, Thoroughbred, 5 Year Old Jumper and Pony Jumpers.

**Nomination 3** - \$200 (1.20m and above)

**Jumper Sections:** 1.20m - 1.40m, 6 & 7 year Old Jumper, Junior and Amateur Jumpers.

**Eligibility:** Any horse, regardless of winnings, is eligible to enter any .70m - 1.50m or Open Jumper Class.

**Declarations:** Nominated Jumpers must declare on the appropriate form in the Show Office the day before the class is to be held. Late declarations will be subject to the Post Entry Penalty and may require the horse to work first or last in the order at management discretion. Classes entered on the Entry Blank constitute a Declaration.

**Jumper Tables:** Refer to the Time Schedule. Management reserves the right to change tables based on weather, entries or other criteria.

**Time Allowed:** The Time Allowed will be based on a speed of 360 yards per minute for Pony Jumpers, and 382 yards per minute for all other sections unless otherwise noted, and may be adjusted accordingly.

**Martingales: 1.30m or below:** No martingale restrictions when used in a conventional manner. Draw Reins/German Martingales: allowed when schooling or in classes 1.20m or below that do not offer prize money. **Above 1.30m** (and all classes restricted to young horses): Only running martingales used in the conventional manner. **Note:** Ponies may not be ridden by a Junior in draw reins or German martingales at any time.

**Ties:** Ties involving first place will be jumped off. Ties not involving first place will be decided upon time unless otherwise stated.

**24-Hour Stabling Rule:** Any class of \$25,000 or more will be subject to the USEF 24-Hour Stabling Rule. Horses must purchase a stall directly from the show and reside in the stall on the official Showgrounds of HITS Del Mar Show Park for the 24-Hour period leading up to and during the class. Horses must be entered in the class and have purchased a stall.

**2025 Zone 10 Specifications:** (Check USHJA.org for the most updated specs.)

- **Jr/Am 1.10m/1.15m Jumper:** Any competitor that competes in any class set at over 1.25m is ineligible to compete in an Amateur Jumper class set below 1.20m at that competition.
- **Jr/Am 1.0m/1.05m Jumper:** Any competitor that competes in any class set at over 1.25m is ineligible to compete in an Amateur Jumper class set below 1.20m at that competition.

## SPECIAL CLASSES

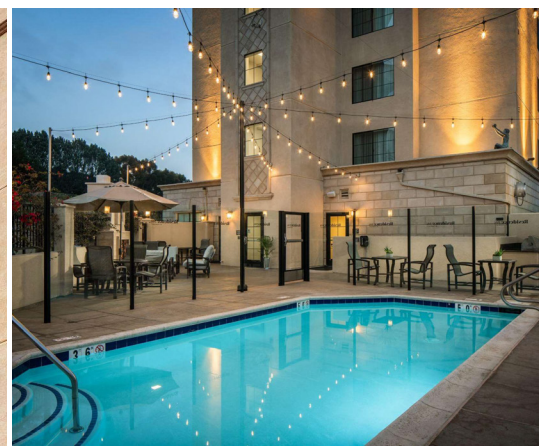
**Order of Go:** The Order of Go will be drawn. In the jump-off, if any, all horses will go in the original drawn order.

**Attire:** Formal attire required in Special Classes.

**Awards:** Winners to ride for presentation of awards in Special Classes

**Trophy & Ribbons:** 1-12 in Special Classes unless otherwise stated

**Show Champion:** Classics do not count towards division Championship awards.



# RESIDENCE INN WELCOMES HITS

At Residence Inn San Diego Del Mar, we value our partnership with HITS Horse Shows

**Amenities Include:**

- Complimentary Full American Breakfast
- All Suites have Full Kitchens
- Comfortable Guest Rooms & Lobby with complimentary Wi-Fi
- Computer Station & Printing Services in Lobby
- Complimentary outdoor Propane Grill & Fire Pit 24-hour
- Market for Snacks & Beverages

For questions contact,  
Morgan Bedard | Sales Executive | [Morgan.Bedard@marriott.com](mailto:Morgan.Bedard@marriott.com)



Residence Inn San Diego Del Mar

**Residence INN**  
BY MARRIOTT

Residence Inn by Marriott® San Diego Del Mar  
3525 Valley Centre Drive,  
San Diego, California, USA, 92130  
858-481-8800  
[Marriott.com/SANDL](http://Marriott.com/SANDL)

# GENERAL INFORMATION, RULES & REGULATIONS

## CONDITIONS OF COMPETITION

Every class offered herein that is covered by the rules and specifications of the current USEF Rule Book will be conducted and judged in accordance therewith. Life, senior active and junior active members shall be eligible to participate in all classes at Regular Competitions, Eventing Competitions at the Modified Level or above and Combined Driving Competitions at the Advanced Level, Dressage, Reining and Vaulting Competitions and Endurance Rides. A non-member may participate as a handler, rider, driver, owner, lessee, or agent at Regular Competitions, Eventing Competitions, Dressage Competitions, Reining Competitions and Combined Driving Competitions upon payment of a Show Pass fee. Participants in the following classes are exempted from the Requirements of this rule: 1) leadline; 2) exhibitions; 3) games and races; 4) classes for 4-H members; 5) walk trot and academy classes (academy classes are classes limited to horses used regularly in a lesson program); 6) USDF introductory level tests, pas de deux and quadrille classes; 7) assistant handlers in Dressage Sport Horse Breeding classes.

**REMINDER:** All USEF Life and Senior Active members, as well as participants who have regular contact with minor athletes, are required to comply with the U.S. Center for SafeSport training requirement to be eligible to participate in the competition. All participants must adhere to the U.S. Center for SafeSport Code, USEF Safe Sport Policy, and the Minor Athlete Abuse Prevention Policies. More information about these can be found at USEF.org.

## USEF ENTRY AGREEMENT

These competitions are governed and approved by the United States Equestrian Federation. Every class offered herein which is covered by the rules and specifications of the current USEF Rule Book will be conducted and judged in accordance therewith. To the extent there is a conflict between the prize list and the USEF rules, USEF rules will prevail.

**USEF WAIVER AND RELEASE OF LIABILITY, ASSUMPTION OF RISK & INDEMNITY AGREEMENT:** Effective immediately, all individuals on the property will be required to sign the USEF Waiver and Release of Liability, Assumption of Risk and Indemnity Agreement. The Agreement will be available on our website (HITSShows.com) and can be executed and signed electronically.

## FEDERATION ENTRY AGREEMENT

By entering a Federation-licensed Competition and signing this entry blank as the Owner, Lessee, Trainer, Manager, Agent, Coach, Driver, Rider, Handler, Vaultor or Longeur and on behalf of myself and my principals, representatives, employees and agents, I agree that I am subject to the Bylaws and Rules of the United States Equestrian Federation, Inc. (the "Federation") and the local rules of Competition. I agree to be bound by the Bylaws and Rules of the Federation and of the competition. I will accept as final the decision of the Hearing Committee on any question arising under the Rules, and agree to release and hold harmless the competition, the Federation, their officials, directors and employees for any action taken under the Rules. I represent that I am eligible to enter and/or participate under the Rules, and every horse I am entering is eligible as entered. I also agree that as a condition of and in consideration of acceptance of entry, the Federation and/or the Competition may use or assign photographs, videos, audios, cable - casts, broadcasts, internet, film, new media or other likenesses of me and my horse taken during the course of the competition for the promotion, coverage or benefit of the competition, sport, or the Federation. Those likenesses shall not be used to advertise a product and they may not be used in such a way as to jeopardize amateur status. I hereby expressly and irrevocably waive and release any rights in connection with such use, including any claim to compensation, invasion of privacy, right of publicity, or to misappropriation. The construction and application of Federation rules are governed by the laws of the State of New York, and any action instituted against the Federation must be filed in New York State. See GR908.4. If not currently a USEF Active Competing member or Subscriber, I acknowledge that I will be enrolled for no cost as a USEF Fan and my USEF Fan Account will continue to annually automatically renew in USEF's sole discretion. Additionally, I acknowledge that the benefits of a USEF Fan are subject to change without notice. USEF may in its sole discretion, at any time, terminate my USEF Fan status. I acknowledge that I may opt out at any time by going to My USEF Dashboard or calling (859) 810-8733.

**MANAGEMENT:** Horse Show Management reserves the right to interpret all questions and conditions in regard to or arising out of an incident to the show without claims for damages or recourse of any kind. All questions not covered in these Rules and Regulations shall be decided by Horse Show Management-their decision to be final. Horse Show Management reserves the right to refuse, accept conditionally or to cancel any entries, disqualify riders or exhibitors, prohibit exhibition of entries and cancel award prizes, without claim for damages; to change any course, to cancel or combine any unfilled classes, or to reschedule classes, after due notice to exhibitors; to change rings or rotate or change judges and officials; to change specifications in jumper classes in order to facilitate the time schedule. Management reserves the right to combine or cancel. Management reserves the right to limit entries in a class. Refused entries will be returned.

**ASSUMPTION OF RISK:** By signing the entry blank, the Owner, Lessee, Trainer, Manager, Agent, Coach, Driver, Rider, Handler, Vaultor or Loungeur acknowledges that horseback riding, particularly jumping, is a dangerous activity and involves inherent risks that may cause serious injury and in some cases death because of the unpredictable nature and irrational behavior of horses, regardless of their training and past performance and expressly assumes all such inherent risks whether identified herein, in the entry blank, or in the Federation Rules and Regulations. A horse, without warning or any apparent cause, can buck, stumble, fall, rear, bite, kick, run, make unpredictable movements, spook, jump obstacles, step on a person's foot or push a person-all of which may cause the rider or observer to fall or be jolted, resulting in serious injury or death. A horse may also become loose and cause injury to an observer or rider or to another horse-a loose horse can run at full gallop in a panic and run into objects or persons or other horses. The Show Ground Facilities are bordered by highways/roads and thus noise from traffic and other sources occurs that can and will cause a horse to unexpectedly spook or react quickly. The Show Ground Facilities contain roads or driveways that are traversed by cars, golf carts, tractors, trailers and heavy equipment all of which may spook a horse. The above warnings and risks are meant as an example of some of the risks that are inherent and may be encountered but it is agreed this is not an exhaustive list and there are numerous additional conditions and/or events that may result in injuries while participating in the Competition and/or being present on the Show Ground Facility.

**CONDITIONS OF ENTRY:** Every horse entered for competition will be under the control of the Horse Show Management, but Horse Show Management will, in no case, be responsible for any loss or damage that may occur, and it shall be a condition of entry that each exhibitor shall defend, indemnify and hold harmless the Horse Show and its officials, employees, directors, officers, HITS LLC and its Sponsors, etc for any loss or accident to his horse, horses, employees or equipment which may occur from sickness, fire or other cause.

**DAMAGE:** Owners and exhibitors shall be held responsible for damage caused by them, their agents or employees to stalls, buildings and other properties on the show grounds, and shall be billed accordingly.

**ADHERENCE TO THE RULES:** All individuals on the horse park property are required to adhere to the rules mentioned in the prize list or as directed by the employees at the horse park. Trainers are all responsible for employees adhering to the rules. Violations will result in expulsion from the horse park.

## HITS SOCIAL MEDIA POLICY:

- HITS encourages positivity in the use of social media platforms and urges persons posting information about HITS, its management, shows, exhibitors, officials, equine athletes, and others to exercise good judgement and think about the potential consequences of their posts and interactions on social media platforms. We urge those using social media to refrain from making derogatory, offensive, inflammatory, or false comments about other athletes, trainers, HITS and its management, our equine athletes, USEF, or any individuals associated with our HITS horse shows. HITS reserves the right to remove third-party content from its social media platforms that violates its social media policy and in extenuating circumstances may block a user from HITS social media sites for repeated offenses of its policy.

## ENTRY POLICY & PROCEDURE

- Entries must be submitted electronically through the Show Management System Online Entry platform, and must be filled out in its entirety.  
**FAXED, MAILED OR EMAILED ENTRIES WILL NOT BE ACCEPTED.**
- A \$500 deposit is due per horse at the time of entry and is non-refundable after the entry due date. This deposit will be applied to the individual horse account for that show. This deposit does not reserve the stall and is non-transferable between horses or accounts.
- A Signed Open Check or Credit Card Authorization must be lodged with the Show Secretary each week before Numbers are issued.
- Visa, MasterCard, Discover and American Express are accepted. Customers paying by credit card should reference the Retail pricing.



- A 3% credit card fee will be applied to all credit card transactions and is nonrefundable once the card has been processed.
- Entries received with payment after entries are due but before the Monday of each show will pay a \$75 late fee. All entries received at the show will pay a \$150 late fee.
- Accounts must be closed at the end of each show week. Management will close Exhibitor Accounts that have not been settled at the conclusion of each show. Back numbers will not be issued until previous week balances are closed.
- Exhibitors must close out their account in the show office or online through the Show Management System Online Entry platform. Exhibitors who do not close out no later than the Monday following each show automatically authorize HITS to close their account using the Credit Card on file. Billing questions or refunds will not be considered after two weeks following the conclusion of the show. Should you have any questions or concerns with your bill, please email the horse show office directly.
- The Horse Show policies herein stated regarding scratches and refunds will be followed regardless of weather and in place of GR 912.
- Substitution of horses are allowed with the same owner.
- **NON-SHOWING HORSES** are not allowed in the show areas. Companion animals are not allowed on the showgrounds.

**ADDS/SCRATCHES:** All adds must be made by 4 pm the day prior to each class. No entries will be accepted for a class scheduled on the same day. In the unusual case the time schedule allows a management approved add the day of a class, the entry fee will be double. Horses and riders who go in a class without entering will pay a fee of \$50. All scratches must be received in the show office before the start of the class in writing to be considered for a refund; scratches via phone call or at the gate will NOT be considered. In divisions that are entered by complete section, no refund will be considered if the horse shows in any class of the division. The only other refunds given will be for cancellation of a class by Management, overpayment of fees, or the rejection of entries because of ineligibility or lack of stall space.

#### TRAINER SPLITS

HITS, LLC allows trainers to split the show charges for miscellaneous items to their clients. Splits will be accepted until noon on the Friday of a show week. No exceptions will be made. Only items billed by the horse show directly can be split. Splits will revert back to the trainer for payment if uncollected.

#### BILLING POLICY

- All entry, stall, feed, and other charges are to be paid weekly and, without exception, must be paid in full by the end of any consecutive showing weeks.
- Prize money won will only be applied if the payee has been provided with a proper SS# or Fed Tax ID# and complete mailing address. Net Prize Money credits will be issued as a check within 30 days as required by USEF and mailed or hand-delivered during consecutive weeks of showing and will be valid for 60 days from issuance. Reissuance of checks must be requested within 90 days. At the end of every calendar year, tax-eligible prize money recipients will receive an IRS Form 1099-MISC reporting taxable prize money income for that year.
- **UNPAID CHARGES** - Any exhibitor leaving the show with an unpaid balance will be billed for these charges and a \$50 billing fee will be added to the total due. Until these charges are settled, all further entries of rider and owner will be returned.

#### REFUNDS

- Refund of pre-paid fees will be given for show scratches received prior to or on the Closing Date. Scratch must be made in writing, according to the procedure outlined above.
- Refund for Horse Deposits, Stalls, and RV Sites will not be given for entries scratched after the Closing Date. Exhibitors are responsible for any such outstanding fees.
- If eligible for refund, a check for refund due less an office fee of \$25 will be mailed within 30 days after the completion of the final Show of the Circuit.
- Billing questions or requests for refunds will not be considered after the Show in question.

**RETURNED CHECKS/CHARGEBACKS:** Checks returned by the bank or Credit card chargebacks for any reason are regarded as a most serious offense and will be handled according to the following procedure: A \$50 penalty or will be assessed for each returned check or chargeback OR 10% of the face value of the check or chargeback, whichever is greater. Accounts will be given ten (10) days to be paid in full with cash or cash equivalent or they will be reported to the U.S. Equestrian Federation, Inc., PCHA and other appropriate association(s) for further disciplinary action. Checks will not be deposited a second time. In the case that the debt is not cleared within 30 days of the conclusion of the show, all prize money will be forfeited. A monthly service fee equal to 18% per annum will begin accruing after 30 days. Note: First time returned checks will automatically be redeposited.

#### PRIZE MONEY

- **Prize Money will be applied to entries.** The Payee will default to the Owner, if the Prize Money Recipient is not provided on the submitted entry each week. A W-9 or W-8BEN, valid Social Security or Federal ID number, and complete mailing address must be provided. If the SSN/EIN has not been provided to the show office within 90 days of the competition, it will be forfeited. Net Prize Money credits will be issued as a check and will be mailed or hand-delivered within 30 days after the Show, thereby ending the show's responsibility.
- **Exhibitors:** Please verify the correct payee and mailing address is recorded in the Show Office. **HITS is not responsible for checks lost or issued to incorrect payees.**
- If the SSN/EIN is not provided, Prize Money will be withheld until SSN / EIN is provided.
- If the IRS has notified us of a discrepancy in Payee name or SSN / EIN prize money will be withheld until the discrepancy is resolved.
- If an outstanding balance exists on an account, prize money may be withheld.
- If the SSN/EIN has not been provided to the show office within 90 days of the competition, it will be forfeited. Prize Money will not be reissued after 90 days.
- **Prize Money Won by Foreign Exhibitors** is subject to the U.S. Internal Revenue Service regulation requiring sporting events to withhold 30% of prize money. Foreign exhibitors should apply for a Social Security number and will be asked to complete Form W-8BEN prior to receiving prize money.
- **Prize Money** is awarded through 6th place in hunter classes and through 6th or 8th place in jumper classes. A class that pays based on a number of entries will pay based on the number of on-time entries and post entries will not be included in the number used to determine the payout. Special Class Prize Money distribution is published in this book.
- A class with fewer than three entries will not award prize money.

**ALL HORSES:** All horses on the property must be registered with each show when on property and have a number assigned. All horses must pay the manure removal and environment, fees as well as a nomination fee regardless of whether the horse enters a class during the competition.

**MANURE REMOVAL:** All horses entered in the competition must pay a mandatory manure removal fee of \$50.

**ENVIRONMENT FEE:** All horses entered in the competition must pay a mandatory environment fee of \$75.

#### ARRIVAL & DEPARTURE:

- Stalls will be available by 10 am, Sunday, April 27. All stalls must be vacated by 8 am, Monday May 5, 2025.

**STABLING:** Permanent stalls and tack rooms will be available for \$600, 10' x 12' with top and bottom doors and dirt flooring. Temporary stalls and tack rooms will be available for \$550, 10' x 12' with top and bottom doors and matted floors. Only shavings will be permitted for bedding of stalls. Exhibitors may be assessed a disposal fee for anything other than shavings. However, we cannot guarantee stabling for post entries, and we recommend that your entries be received before the closing date. The show office handles all stall transactions and charges. Private transactions involving stalls are not permitted. Management reserves the right to limit tack stalls. Hauling in is not permitted. All horses entered must purchase a show stall.

**Permanent Stall** \$600

**Tent Stall** \$550

Curfew and quiet times must be observed between 9 pm and 5 am (as required by GR1215.3 #033-22)

**Stabling Inquiries** - [DelMarOffice@HITSShows.com](mailto:DelMarOffice@HITSShows.com)

**RV RESERVATIONS:** Contact [DelMarRV@HITSShows.com](mailto:DelMarRV@HITSShows.com). RV space reservations must be received in advance to guarantee a space.

**STALL CLEANING:** Please deposit all manure at the ends of the barn aisles and NOT in the middle or in front of the stalls. If you leave anything behind in the stable area, you will be billed a minimum of \$500. If syringes are left anywhere other than the receptacles provided you will be billed \$75 per syringe. This will be strictly enforced. Trainers are encouraged to supervise their staff to avoid this fee.

**STALL ALTERATIONS:** As part of HITS Del Mar's ongoing commitment to ensure the safety of all participants, particularly the horses in this instance, as well as preserving the integrity of our facilities, we are implementing important updates to our stabling guidelines. These new guidelines apply to all events hosted at Del Mar Horse Park. We kindly ask for your attention to the following points: **Removal of Stall Customizations:** Effective immediately, all customizations to the stalls, including but not limited to nails, screws, staples, eye hooks, plastic sheeting, metal wire, twine, and the like must be removed. The use of such materials, especially staples, poses significant risks to the horses and the integrity of our facilities. We strongly recommend the elimination, or at the very least, significant limitation of staples inside the stalls. Our goal is to ensure that all stalls are safe, clean, and in their original condition (minus the bedding). It is the competitors' responsibility to ensure that their staff is fully informed of and complies with these updated guidelines. We encourage team leads to hold briefings with their staff to ensure everyone is aware of these changes and understands the importance of adhering to them. **Fines for Non-Compliance:** In our efforts to maintain the highest standards of facility upkeep and animal safety, **HITS Del Mar will impose a fine of \$500 for stalls that are not left in good condition.** This measure is not intended to be punitive, but rather to underscore the importance of leaving the stalls in the same condition as they were found (bedding excluded). We believe this will encourage a collective effort towards maintaining a clean and safe environment for everyone, a form of pay-it-forward to all who utilize our stabling. We understand that these updates may require some adjustments, and we appreciate your cooperation and commitment to creating a safe experience for all. Should you have any questions or need further clarification, please do not hesitate to contact our office. [DelMarOffice@HITSShows.com](mailto:DelMarOffice@HITSShows.com)

**LAYOVER:** Stalls will be available for laying over between shows. Please contact Del Mar Horsepark for availability, pricing and reservations.

**FEED & BEDDING:** Pre-orders and onsite orders must be submitted through [HITSShows.com/Horse-Show-Office](https://HITSShows.com/Horse-Show-Office) (online order) Orders must be made by NOON each day for same-day delivery through the website.

**WASHING HORSES:** Nozzles are required on all hoses to help conserve water.

**MEDICAL WASTE:** All needles and syringes MUST be deposited in designated disposal containers and not left in stalls or thrown in trash receptacles. Violators will be fined \$75 per needle/syringe. For the first offense the trainer/owner will be notified as well as the appropriate association. The second offense will disqualify the individual and horse and they will be banished from the show with NO REFUND.

**SAFETY REGULATIONS:** Unauthorized use of the light fixtures will result in removal of your appliance. Smoking or open flame devices are not permitted within the stables. Keep flammable decorations to a minimum. Electrical outlets are provided.

**SCHOOLING SUPERVISION:** Gate Stewards are schooling supervisors and have absolute authority to scratch riders who do not follow USEF, FEI or appropriate association schooling rules.

**ATTIRE:** Proper attire is required in all hunter, equitation rings during competition as well as Jumper classes with \$1,000 or more in prize money. Proper Attire is requested for all other jumper classes.

**DOGS:** Dogs and other pets must be confined to the Stable Area. Dogs must be on a leash at all times. Stray dogs and dogs in violation will be impounded by Animal Control authorities. Under no circumstances are dogs allowed at the arenas. Loose Dog Fine: \$100

**MAIL, TELEPHONE & WEB:** [HITSShows.com](https://HITSShows.com) | [DelMarInfo@HITSShows.com](mailto:DelMarInfo@HITSShows.com) | [DelMarOffice@HITSShows.com](mailto:DelMarOffice@HITSShows.com) | 818.987.3336

• **DELIVERY ADDRESS** c/o Horse Show Office, Del Mar Horsepark, 14550 El Camino Real, Del Mar, CA, 92014  
Management will not be responsible for mail or parcel deliveries made to exhibitors, vendors or others. Please make arrangements accordingly.

**PROTEST:** Any USEF member lodging a protest must first deposit \$200 (non-members \$300) payable to HITS with the Show Secretary, which sum shall be forfeited to the Horse Show, if same is not sustained. All protests must be in writing, signed by the protester and filed within 48 hours of the occurrence of the alleged violation. A protest may be filed with the Show Manager, the Federation Hearing committee or Show Secretary. If the protest is sustained, the entries standing next in award shall be moved up accordingly. See USEF GR603 and GR603.1.

**VACCINATION INFORMATION:** Beginning December 1, 2015, all horses entering the grounds of a Federation- licensed competition must be accompanied by documentation of Equine Influenza Virus and Equine Herpes Virus (Rhinopneumonitis) vaccinations within six months prior to entering the stables. The management in consultation with respected veterinarians and local animal health authorities strongly recommend and urge that all horses attending the show follow a two-part West Nile vaccination protocol consisting of a primary vaccination, followed by a booster 3-6 weeks later. Should you have any questions please contact the CDFA. Please refer to the [HITSShows.com](https://HITSShows.com) and the show office for current Equine Health and Biosecurity measures. **Any horse with a temperature of 101.5+ must be reported to official show veterinarian. Upon veterinary examination, if diagnostic testing is deemed necessary, testing will be conducted at owner's expense. If veterinarian suspects infectious disease after inspection, the horse will be required to go to isolation or off the property.** Health Paperwork will be checked at the gate prior to entry.

**DRUG TESTING:** State of California drug testing rules apply. For a copy contact the Show Office.

## ASSOCIATION MEMBERSHIP & FEE REQUIREMENTS ADDITIONAL USHJA MEMBERSHIP REQUIREMENTS.

### MEMBERSHIP - PEOPLE

- **Owner-Rider-Trainer:** Must be ACTIVE COMPETING members of USEF and USHJA, or join at the show, or pay Show Pass fees. Note: Owners and Riders are limited to ONE USEF Showpass per competition year, Trainers MUST be members. USEF showpasses must be purchased through the individual's USEF account.
- **Adult or Amateur Status:** Riders showing in classes restricted to Adults or Amateurs must have USEF Amateur Certification. Foreign Exhibitors must present documentation indicating their Amateur status with their home Federation and must JOIN USEF as ACTIVE COMPETING Members and Sign for Amateur Status.
- **Safe Sport:** Beginning January 1, 2019, All Senior members of USEF will be required to complete Safe Sport training at [USEF.org](https://USEF.org) before competing in a USEF Licensed competition. An exhibitor will not be allowed to compete until this requirement is met.
- **International Riders:** All classes held during the 2025 HITS Del Mar Series will be run under National rules with regard to riders. If the capacity of International riders exceeds the National riders rule, riders will be accepted on a First come, First served basis. All International Riders must have an active, competing USEF Membership as well as having completed SafeSport Training for Riders 18 and Older.

**Reminder:** USEF MAAP Requirements All USEF Life and Senior Active members, as well as participants who have regular contact with minor athletes, are required to comply with the U.S. Center for SafeSport training requirement, to be eligible to participate in the competition. All participants must adhere to the U.S. Center for SafeSport Code, USEF Safe Sport Policy, and the Minor Athlete Abuse Prevention Policies. More information about these can be found at [USEF.org](https://USEF.org).

**MEMBERSHIP - FARMS & OTHER ENTITIES:** One owner of Farms, Partnerships, and any entities owning a horse must be an active senior member of USEF and must have completed Safe Sport training.

### MEMBERSHIP - HORSES

- **USHJA Horse Registrations:** All horses competing in USEF licensed Hunter/Jumper/Equitation competitions must have or apply for a Registration Number from USHJA
- **USEF Horse Recording:** Horses earning points toward USEF HOTY Awards and/or Zone Awards, USHJA Hunter Derby and or competing in Grand Prix must be Recorded with USEF Annually or for Life.
- **Microchip:** Beginning December 1, 2018, all horses competing in USEF licensed Hunter/Jumper/Equitation competitions must have a USEF-approved Microchip on file with USEF. Horses will not be allowed to compete until this requirement is met.



- **Measurement Card:** Small Junior Hunters, Pony Hunters, Children's Pony Hunters, and Pony Jumpers must have valid USEF Measurement Card or copy of a valid Measurement Form, or be a measured at the show prior to showing. Foreign Measurement cards are not acceptable as proof of Measurement. **MEMBERSHIP HORSE FEES:**
- **Horse Fee:** USEF \$8, USHJA \$10
- **Horse Drug Fee:** USEF \$15 CDFA \$14
- **High Performance Fees:** Horses entered in Grand Prix are required to pay the \$35 IHP Fee up to a total of the cap \$420 per competition year. Please refer to the USEF website for additional information.

THE SHOW SECRETARY WILL NOT ISSUE A NUMBER TO ANY EXHIBITOR UNTIL ASSOCIATION REQUIREMENTS HAVE BEEN MET. ONCE THE NUMBER IS ISSUED, ASSOCIATION FEES, INCLUDING SHOW PASS FEES, WILL NOT BE ADJUSTED FOR THAT SHOW. Failure to provide proper credentials will result in show pass fees and/or Incomplete Entry fees charged in each incident.

**The Exhibitor has the ultimate responsibility for proper registration of horse, owner, rider and trainer with USEF/USHJA and for entering the horse under proper ownership where points are concerned.**

**HELMET RULE:** It is compulsory for all persons at Federation licensed hunter, jumper or hunter/jumper competitions when mounted anywhere on the competition grounds, to wear properly fastened protective headgear which meets or exceeds ASTM (American Society for Testing and Materials)/SEI (Safety Equipment Institute) standards for equestrian use and carries the SEI tag. It must be properly fitted with harness secured. Exception: In Hunter or Jumper classes, adults may be allowed to remove their headgear while accepting prizes and during the playing of the National Anthem only; they must refasten their headgear prior to the lap of honor. It is compulsory for riders in Paso Fino classes, both open and breed restricted including Hunter Hack, where jumping is required and when jumping anywhere on the competition grounds to wear properly fastened protective headgear which meets or exceeds ASTM (American Society for Testing and Materials)/SEI (Safety Equipment Institute) standards for equestrian use and carries the SEI tag. It must be properly fitted with harness secured. A Show Committee, Competition Management, and Licensed Officials must bar riders without protective headgear from entering the ring for classes in which protective headgear is required and may bar any entry or person from entering the ring if not suitably presented to appear before an audience.

**GOLF CARTS & BICYCLES:** Minors who do not have a valid driver's license which allows them to operate a motorized vehicle in the state in which they reside will not be permitted to operate a motorized vehicle of any kind, including, but not limited to, golf carts, motorcycles, scooters, or farm utility vehicles, on the competition grounds of licensed competitions. Minors who have a valid temporary license may operate the above described motorized vehicles as long as they are accompanied by an adult with a valid driver's license. The parent/legal guardian or individual who signs the entry blank as a parent or guardian of a minor operating a motorized vehicle in violation of this rule are solely responsible for any damages, claims, losses or actions resulting from that operation. Violations of this rule will be cause for penalties against those responsible for the child committing the offense. Wheelchairs and other mobility assistance devices for individuals with disabilities are exempt from this rule. The unsafe use of personal electronic transport devices, as determined by the competition officials and management in their sole discretion, that do not require a driver's license to operate, including but not limited to segways, hover boards, and single wheeled scooters is prohibited on competition grounds. Operating such devices in areas where people gather may be deemed "unsafe use" if there is a risk of harm to others. If the operator of the device is a minor, the parent/legal guardian or individual who signs the entry blank as a parent or guardian of a minor operating the device in violation of this rule is accountable and may be subject to penalties. Wheelchairs and other mobility assistance devices for individuals with disabilities are exempt from this rule.

**PARKING:** Parking allowed in designated areas only. Violators parked in NO PARKING ZONES and FIRE LANES will be issued citations and/or towed from the premises at the owner's expense. There are Handicap parking areas in the Stable Area and public parking lot.

**INSURANCE:** All owners and competitors are personally responsible for damages to third parties caused by themselves, their employees, their agents, or their animals. They are therefore strongly advised to take out third-party insurance providing full coverage for participation in equestrian events at home and abroad, and to keep the policy up to date.

**FOOD:** Food will be served in the food court.

**NON SMOKING EVENT:** The events included in this prize list are non smoking events in accordance with California State Law SB-977 Tobacco: youth sports events.

**SAFE SPORT VERIFICATION:** As of January 1, 2019 all USEF members 18-years-old and older, with a Competing Membership, must complete SafeSport Training in order to be eligible to participate in USEF activities, including competitions. Please see the USEF website at <https://USEF.org/compete/resources-forms/rulesregulations/safe-sport> for more information. Those who do not complete the training will be ineligible to participate in USEF activities, including competitions.

**RAIN:** In the event of rain prior to the Show, it is the riders' responsibility to call Show Management to determine whether the show is canceled.

**RESPONSIBILITY OF PAYMENT OF SERVICES & SUPPLIES:** All owners and exhibitors will be held responsible for any damage incurred by them, their animals, agents, or employees, to stalls, buildings and other properties on the Show grounds and shall be billed accordingly. All bills for veterinary, farrier services and feed/bedding are due and payable during the Show. Management reserves the right to deduct any unpaid veterinary, farrier and feed/bedding bills from premium money due the exhibitor. Any exhibitor not meeting his obligations to the official Show Veterinarian, farrier and feed/bedding vendor will be termed an undesirable exhibitor and entries from that exhibitor may not be accepted at subsequent shows.

**CLOSED RINGS:** Horses are not permitted in any ring where a course is set unless otherwise given permission from management, or when there is equipment in the ring. Please check with the show office for information regarding schooling policies. Horses and riders must yield immediately for watering and dragging. Violations of the above mentioned rules may be considered cause for elimination from the show.

**RING INFORMATION:** All warm up and competitions arenas contain either geotextile or sand footing. Dimensions are: Grand Prix Ring (grass footing) 250' X 300', Hunter Rings and additional jumper rings 130' X 290', Warm Up rings 150' X 200'.

#### NEAREST HOSPITAL & LEVEL 1 TRAUMA CENTER:

• <b>HOSPITAL</b>	<b>Scripps Memorial Hospital Encinitas</b> (4.63 miles)	354 Santa Fe Drive, Encinitas, CA 92025	760.633.6501
• <b>LEVEL 1 TRAUMA CENTER</b>	<b>Scripps Mercy Hospital</b> (18.9 miles)	4077 Fifth Avenue, San Diego, CA 92103	619.294.8111

#### FACILITY ADDRESS & DIRECTIONS:

• <b>ADDRESS</b>	<b>Del Mar Horsepark</b>	14550 El Camino Real, Del Mar, CA 92014	858.201.6874
• <b>DIRECTIONS from McClellan-Palomar Airport, Carlsbad, CA</b>		21 minutes	
Get on I-5 S from Palomar Airport Rd, Aviara Pkwy and Poinsettia Ln. Follow I-5 S to Via De La Valle in San Diego. Take exit 36 from I-5 S. Continue on Via De La Valle to your destination.			
• <b>DIRECTIONS from San Diego International Airport</b>		28 minutes	
Get on I-5 N from N Harbor Dr and India St. Follow I-5 N to Via De La Valle. Take exit 36 from I-5 N. Continue on Via De La Valle to your destination.			
• <b>DIRECTIONS from Tijuana International Airport, Mexico</b>		59 minutes	
Take Aeropuerto/Tijuana - Tecate/Vía de la Juventud Ote and Blvd. Aztecas Nte. to CA-905 W/Otay Mesa Fwy in San Diego, United States. Take I-805 N to Via De La Valle. Take exit 36 from I-5 N. Continue on Via De La Valle to your destination.			
• <b>DIRECTIONS from John Wayne Airport, Santa Ana, CA</b>		1 hour 8 minutes	
Get on I-405 S in Irvine from JWA Roadway and N Airport Way. Take I-5 S to Via De La Valle in San Diego. Take exit 36 from I-5 S. Continue on Via De La Valle to your destination.			
• <b>DIRECTIONS from Tom Bradley International Los Angeles LAX, CA</b>		1 hour 43 minutes	
Get on I-105 E from World Way and CA-1 S/S Sepulveda Blvd. Follow I-405 S, CA-73 S and I-5 S to Via De La Valle in San Diego. Take exit 36 from I-5 S. Continue on Via De La Valle to your destination.			



# MAAPP

## MINOR ATHLETE ABUSE PREVENTION

### LEARN ABOUT MAAP POLICIES



Safe Sport Training



Local Travel



One-On-One Interactions



Social Media & Electronic Communications



Read about these & more at [usef.org/MAAPP](https://usef.org/MAAPP)

### REPORT MAAP POLICY VIOLATIONS



[usef.org/safe-sport/reporting](https://usef.org/safe-sport/reporting)

859-225-6915 or Text Anonymously 855-682-8733



**RIDE INTO SPRING, SUMMER & FALL WITH HITS** - Del Mar Horsepark in Del Mar, California, brings the premier HITS experience to the West Coast, with an iconic venue, elite competition opportunities, generous prize money offerings, and unique hospitality. From the dazzling hunters and incredible jumpers to the captivating dressage movements, HITS Del Mar hosts several weeks of dressage and hunter/jumper competitions throughout the year.



# HITS

The popular six-week long dressage series at HITS Del Mar includes three weeks of CDI competition, drawing some of the sport's top riders. The HITS Del Mar Dressage Opener kicks off the excitement on February 13th, featuring a CDI-W division, which offers riders valuable points toward qualification for the FEI Dressage World Cup™ Final in Basel, Switzerland, in April 2025. The series also includes several FEI Grand Prix Freestyle test qualifying opportunities for the new US Equestrian Open Dressage Final. HITS Del Mar is one of just a handful of venues to have been selected as part of the qualifying process for the prestigious Final, which aims to showcase Olympic equestrian disciplines to a broader audience.

## **HITS DEL MAR DRESSAGE OPENER**

**February 13-16** | FEI CDI-W, USEF Level 5

## **HITS DEL MAR DRESSAGE AFFAIRE**

**March 20-23** | FEI CDI3\*, USEF Level 5



**DEL MAR NATIONAL**  
*Horse Show* - Dressage

**April 17-20** | FEI CDI3\*, USEF Level 5

## **CDS ROAD TO CHAMPIONSHIPS, RAAC & JUNIOR CHAMPIONSHIPS**

**July 17-19** | USEF Level 3

## **HITS DEL MAR DRESSAGE FALL I**

**September 6-7** | USEF Level 2

## **HITS DEL MAR DRESSAGE FALL II**

**October 17-19** | USEF Level 3

