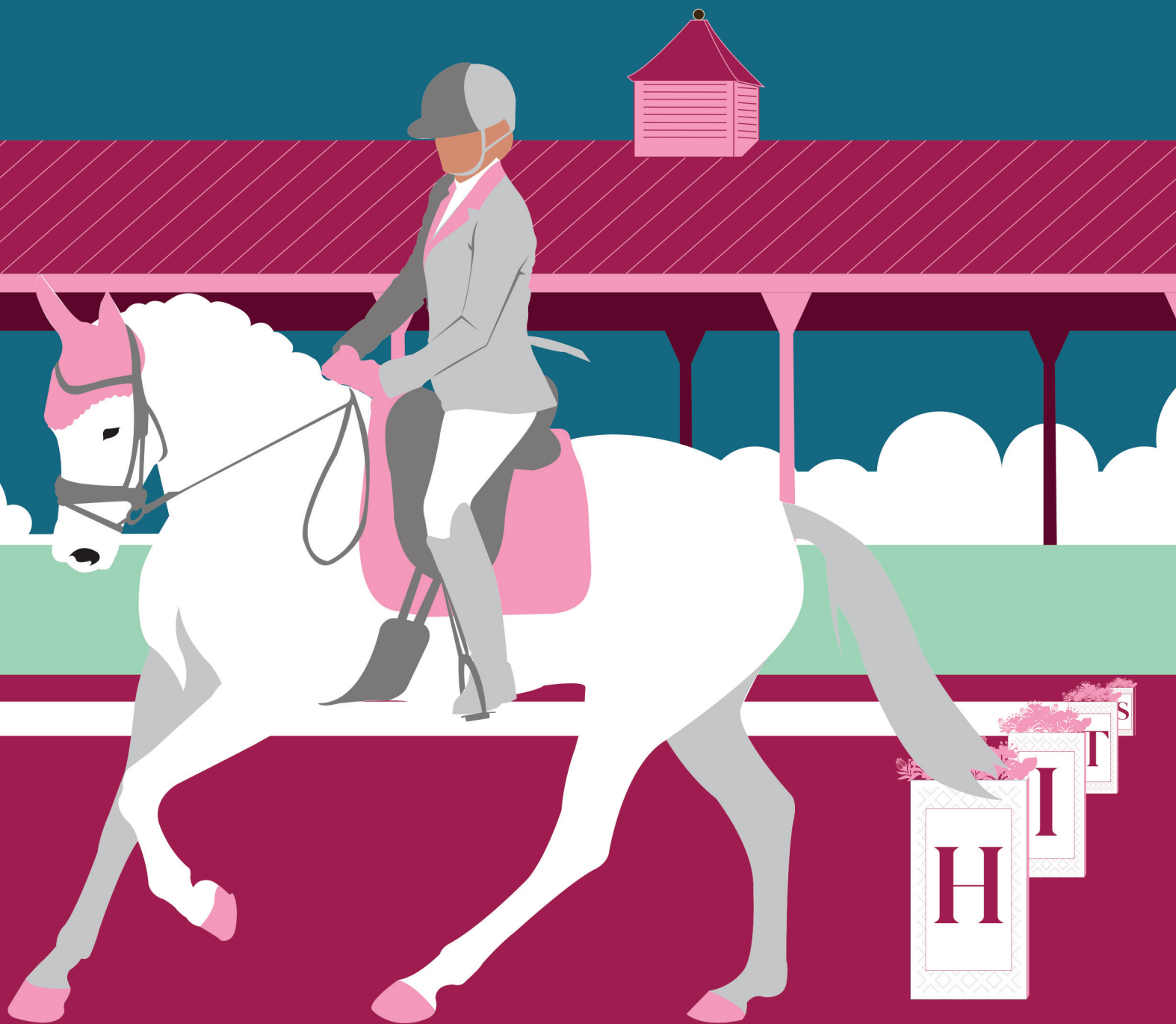




HUDSON VALLEY DRESSAGE MAY

HITS-ON-THE-HUDSON | MAY 10-11, 2025



USEF/USDF #327545 | DRESSAGE LEVEL 3
2025 GAIG/USDF Regional Championships Qualifier



HITS

HITS, LLC. | 151 Stockade Dr., Kingston, NY 12401
845.246.8833 | info@HITSShows.com | HITSShows.com



HITS

HITS Hudson Valley Dressage May Prize List

Opening Date: March 31, 2025
Closing Date: April 25, 2025
Days & Dates: Saturday May 10 thru Sunday May 11, 2025

Official Name: HITS Hudson Valley Dressage May, qualifier for:

- 2025 FEI North American Youth Championship
- 2025 USEF Children Dressage National Championship
- 2025 USEF Pony Rider Dressage National Championship
- 2025 Adequan®/USEF Junior Dressage National Championship
- 2025 USEF Young Rider Dressage National Championship
- 2025 Adequan®/USEF Brentina Cup Dressage National Championship
- 2025 Markel/USEF Young and Developing Horse Dressage National Championships
- 2025 USEF Intermediaire I Dressage National Championship
- 2025 USEF Grand Prix Dressage National Championship
- 2025 Adequan®/USEF Para Dressage National Championships
- 2025 FEI World Breeding Championships for Young Horses in Dressage (Five-, Six-, and Seven-Year Olds)

2025 GAIG/USDF Regional Championships Qualifier

USEF/USDF# 327545, Dressage Level 3

Location: 454 Washington Ave Ext,
Saugerties, NY 12477

Manager: Cameron Wyman
(253)365-9364
Cameron@hitsshow.com

Secretary: Debra Reinhardt
17108 Key Lime Blvd
Loxahatchee, FL 33470
(203)264-2148
debra.reinhardt@hitsshow.com

Judges: Roberta Carleton, CT, (R)
Catherine Hill, VT, (R)
William McMullin, FL, (S)
Heather Stalker, FL, (S)
William Warren, FL, (S)

USEF Technical Delegate: Anita Jaffe, NY, (r)

Awards: Each class will be pinned for Open, AA and JrYR. Up to six Ribbons for each class and division. First Place Trophy will be awarded if there are 3 or more riders in the division or first place winner has 65% (68% for MFS) or higher score. No mounted award ceremonies.

Entry Fees:

See Class Chart for Class Fees

Other Fees:

USDF Non-Member	\$55
USEF Drug Fee (\$15 Drug/Meds & \$8 USEF Fee)	\$23/horse
Office Fee (Non-Refundable)	\$50/entry
Non-competing Horse Fee plus office fee	\$80
Post Entry Surcharge	\$50
(Applies to all entries RECEIVED after the closing date.)	
Class Change, if granted by show secretary	\$30/class

All entries MUST submit applicable USEF and USDF documents for rider, owner, trainer and horse, a negative Coggins dated within 12 months of show, a documentation of EIV and EHV vaccinations within six months of the show, a drug fee, and non-refundable office fee. All USEF memberships and horse recordings must be done before the show as none can be done at the show. Please include USDF non-member fee if applicable. All entries must have three signatures and also emergency info for rider in case of injury to rider on the entry form. In addition, USEF waiver must be signed by all parties on the entry. Checks payable to **HITS, LLC** or fill out Credit Card info on the entry form. American Express, Mastercard and Visa accepted. Entries can be mailed, emailed or online via HorseShowOffice.com. Emailed or online entries are only accepted with CC as payment. Post entries will be accepted to fill scratches with a \$50 post entry fee. Completed entries will be processed in the order they are received.

Non-negotiable check, declined credit card or chargebacks: Checks returned by the bank or Credit card chargebacks for any reason are regarded as a most serious offense and will be handled according to the following procedure: A \$50 penalty will be assessed for each returned check or chargeback OR 10% of the face value of the check or chargeback, whichever is greater. Accounts will be given ten (10) days to be paid in full with cash or cash equivalent or they will be reported to the U.S. Equestrian Federation, Inc., PCHA and other appropriate association(s) for further disciplinary action. Checks will not be deposited a second time. In the case that the debt is not cleared within 30 days of the conclusion of the show, all prize money will be forfeited.

Refunds: Refunds will be given for cancellations received in writing or emailed on or before the closing date less office fee. **Unconditionally, no refunds after closing date or for 'acts of god' which require management to cancel classes or day(s) of competition.** Any unused USEF or USDF fees will be refunded after any indebtedness is settled.

Times: Times will be on the website, www.horseshowoffice.com, at least one week prior to the competition and updated times will be posted online at www.horseshowoffice.com by noon on Thursday. Please email or upload music and sign up for sound checks online with secretary. IF CDs are the only method, music must be in MP3 or WAV formats, and CDs will NOT be returned.

Stabling: Permanent and Premier Temporary (barns A & B) stalls are 12'x12' (minimum) with full doors and matted floors, \$250 for duration. No initial bedding. Please note your stabling group on your entry. **No refunds on stabling after closing.** May arrive on Thursday after 3pm (no riding), must vacate by 7pm Sunday. Earlier arrivals and later departures must get permission from management and \$50/night fee. Bedding is TBD/bale and pre-orders must be ordered with the show secretary by Monday before the show. Hay at TBD/bale is available for purchase at the show office. Limited number of paddocks on first come bases are available for \$200. The sharps containers are placed in each barn.

Golf Carts: May be reserved at <https://deverrentals.com/>.

Accommodations:

Hotels can be found on www.hitsshow.com.

Camper Hookups are \$225 for duration. Please include payment with entry.

Directions:

From the **North:** Take I-87 (NY State Thruway) to Exit 20 – Saugerties. Turn right on Rt 32 N, *Travel 0.5 mi past Peoples Rd to 'Y' intersection. Bear right at 'Y' intersection to County Rt 34 & go 0.1 mi to 4-way stop. Turn right onto Malden Turnpike/County Rt 34. Go 1.6 mi to stop sign at intersection for Rt 9W. Turn right onto Rt 9W South. Go 0.4 mi to Krout Rd. Turn right onto Krout Rd – Caution! This is a steep downhill grade. HITS will be on your left at the base of the hill. Turn in at Gate A.

From the **South:**

Take I-87 (NY State Thruway) to Exit 20 – Saugerties. Turn left at traffic light after tollbooth.

Immediately move into the right lane and bear right onto Rt 32 North. Follow directions from '**'.

Maps available on www.hitsshow.com.

Footing: All classes are scheduled in large (20m X 60m) sand mixture arenas with large warmups. Separate Lunging area.

Entertainment: Food available on the grounds beginning 7am each day.

Other: Farrier on the grounds. Veterinarian on call, Rhinebeck Equine Assoc – (845)876-7085 and contact info will be posted. All dogs must be leashed. Management reserves the right to combine, divide, or cancel classes.

For Pony measurement, the owner or agent must notify competition management and/or competition secretary, and request a measurement within five days of the start of the competition (05/5). A \$100 fee will be incurred to cover the measurement session and scheduling and cost of the veterinarian.

New bridle & bit check procedures: Per the updated bridle & bit inspection requirements in USEF Rulebook DR126.2.i.1.a (page 48) Technical Delegates (TD) are now required to inspect at least 50% of bridles & bits of horses entered in the competition. Along with ringside inspections the TD will be walking through the barns inspecting bridles & bits.

EVERY CLASS OFFERED HEREIN WHICH IS COVERED BY THE RULES AND SPECIFICATIONS OF THE CURRENT USEF RULEBOOK WILL BE CONDUCTED AND JUDGED IN ACCORDANCE THEREWITH.

Reminder: All USEF Life and Senior Active members, as well as participants who have regular contact with minor athletes, are required to comply with the U.S. Center for SafeSport training requirement, to be eligible to participate in the competition. All participants must adhere to the U.S. Center for SafeSport Code, USEF Safe Sport Policy, and the Minor Athlete Abuse Prevention Policies. More information about these can be found at www.usef.org.

HITS Open Classes					
Sat	Sun	Class Name	Division	Fee	Qual
101	201	USEF Training Level Test 1	Open/AA/JrYR	\$50	
102	202	USEF Training Level Test 2	Open/AA/JrYR	\$50	
103	203	USEF Training Level Test 3	Open/AA/JrYR	\$50	\$20
105	205	USEF Training Level Test 1****	Opportunity	\$50	
106	206	USEF Training Level Test 2****	Opportunity	\$50	
111	211	USEF First Level Test 1	Open/AA/JrYR	\$50	
112	212	USEF First Level Test 2	Open/AA/JrYR	\$50	
113	213	USEF First Level Test 3	Open/AA/JrYR	\$50	\$20
121	221	USEF Second Level Test 1	Open/AA/JrYR	\$50	
122	222	USEF Second Level Test 2	Open/AA/JrYR	\$50	
123	223	USEF Second Level Test 3	Open/AA/JrYR	\$50	\$20
131	231	USEF Third Level Test 1	Open/AA/JrYR	\$55	
132	232	USEF Third Level Test 2	Open/AA/JrYR	\$55	
133	233	USEF Third Level Test 3	Open/AA/JrYR	\$55	\$20
141	241	USEF Fourth Level Test 1	Open/AA/JrYR	\$55	
142	242	USEF Fourth Level Test 2	Open/AA/JrYR	\$55	
143	243	USEF Fourth Level Test 3	Open/AA/JrYR	\$55	\$20
150	250	FEI Test of Choice*	Open/AA/JrYR	\$65	\$20
151	251	FEI Prix St.George	Open/AA/JrYR	\$65	\$20
152	252	FEI Intermediate I	Open/AA/JrYR	\$65	\$20
154	254	FEI Grand Prix	Open/AA/JrYR	\$65	\$20
155	255	FEI/USEF Pony TOC*	Pony	\$65	\$20
156EF		FEI Pony Team	USEF	\$85	
	256EF	FEI Pony Individual	USEF	\$85	
157EF		FEI Junior Team	USEF/NAYC	\$85	\$20
	257EF	FEI Junior Individual	USEF/NAYC	\$85	
158EF		FEI Young Rider Team	USEF/NAYC	\$85	\$20
	258EF	FEI Young Rider Individual	USEF/NAYC	\$85	
159EF		FEI Children's Team	USEF/NAYC	\$85	
	259EF	FEI Children's Individual	USEF/NAYC	\$85	
161EF		FEI Intermediate II – U25/Markel	Markel/USEF/NAYC	\$85	\$20
	261EF	FEI Grand Prix (16-25) – U25	USEF/NAYC	\$85	
162EF		FEI Prix St.George – Markel/National Qualifier	Markel/USEF	\$85	\$20
	262EF	FEI Intermediate I – National Qualifier	USEF	\$85	\$20
163EF		FEI Grand Prix – National Qualifier	USEF	\$85	\$20
	263EF	FEI Grand Prix Special – National Qualifier	USEF	\$85	
160		Young Horse TOC*	Open	\$85	
165EF		FEI 5yo YH Prelim	O/Markel/USEF/WBC	\$85	
166EF		FEI 6yo YH Prelim	O/Markel/USEF/WBC	\$85	
167EF		FEI 7yo YH Prelim	O/Markel/USEF/WBC	\$85	
	264EF	USEF 4yo Young Horse	Open/Markel/USEF	\$85	
	265EF	FEI 5yo YH Finale	O/Markel/USEF/WBC	\$85	
	266EF	FEI 6yo YH Finale	O/Markel/USEF/WBC	\$85	
	267EF	FEI 7yo YH Finale	O/Markel/USEF/WBC	\$85	
	268EF	Developing Horse – PSG	Markel/USEF	\$85	
	269EF	Developing Horse – GP	Markel/USEF	\$85	

171EF		FEI Para Intermediate A TOC	USEF	\$85	
	271EF	FEI Para Intermediate B TOC	USEF	\$85	
172EF		FEI Para Grand Prix A TOC	USEF	\$85	
	272EF	FEI Para Grand Prix B TOC	USEF	\$85	
	290	USDF Freestyle TOC**	Open/AA/JrYR	\$65	\$20
	291	FEI Freestyle TOC**	Open/AA/JrYR	\$65	\$20
	292EF	FEI Junior Freestyle	NAYC	\$85	
	293EF	FEI YR Freestyle	NAYC	\$85	
	294EF	FEI Para Intermediate Freestyle TOC	USEF	\$85	
	295EF	FEI Para Grand Prix Freestyle TOC	USEF	\$85	
170	270	Dressage Seat Equitation***	JrYR/AA	\$40	
173	273	Materiale Fillies 3yo (May 10, 2022)		\$40	
174	274	Materiale Mares 4 & 5 yo		\$40	
175	275	Materiale Colts/Gelding 3yo (May 10, 2022)		\$40	
176	276	Materiale Stallions/Gelding 4 & 5yo		\$40	
180	280	USEF Test of Choice*	Open/AA/JrYR	\$55	\$20

Note: All open classes will be split Open, AA, and JrYR. 'Qual' is GAIG/USDF Regional Championship Qualifier.

* FEI Test of Choice is FEI tests and USEF TOC is USEF tests. Pony TOC is any USEF or FEI test. GAIG/USDF Regional Championships Qualifier if applicable. YH TOC is USEF 4yo, FEI 5yo, and 6yo only tests.

**Class will be split if entries warrant. Note: Training Level is not GAIG/USDF Regional Championship Qualifier.

***This class is a qualifier for the Dressage Seat Medal Semi-Finals and USDF Regional Adult Amateur Equitation Program.

**** Riders riding only in Opportunity classes do not need to pay USEF show pass or USDF non-member fees, USDF HID, or drug fee. Please note that riders and horse must comply with the USEF rules including drug testing. Riders may enter both Opportunity classes and Open classes, but memberships and horse registrations fees, etc may apply.

Motorized Vehicle – GR1301.7 & GR 1301.8

Minors who do not have a valid driver's license which allows them to operate a motorized vehicle in the state in which they reside will not be permitted to operate a motorized vehicle of any kind, including, but not limited to, golf carts, motorcycles, scooters, or farm utility vehicles, on the competition grounds of licensed competitions. Minors who have a valid temporary license may operate the above described motorized vehicles as long as they are accompanied by an adult with a valid driver's license. The parent/legal guardian or individual who signs the entry blank as a parent or guardian of a minor operating a motorized vehicle in violation of this rule are solely responsible for any damages, claims, losses or actions resulting from that operation. Violations of this rule will be cause for penalties against those responsible for the child committing the offense. Wheelchairs and other mobility assistance devices for individuals with disabilities are exempt from this rule.

The unsafe use of personal electronic transport devices, as determined by the competition officials and management in their sole discretion, that do not require a driver's license to operate, including but not limited to segways, hover boards, and single wheeled scooters is prohibited on competition grounds. Operating such devices in areas where people gather may be deemed "unsafe use" if there is a risk of harm to others. If the operator of the device is a minor, the parent/legal guardian or individual who signs the entry blank as a parent or guardian of a minor operating the device in violation of this rule is accountable and may be subject to penalties. Wheelchairs and other mobility assistance devices for individuals with disabilities are exempt from this rule.

Membership Statement – GR901.9

Life, senior active and junior active members shall be eligible to participate in all classes at Regular Competitions, Eventing Competitions at the Modified Level or above and Combined Driving Competitions at the Advanced Level, Dressage, Reining and Vaulting Competitions and Endurance Rides. A non-member may participate as a handler, rider, driver, owner, lessee, or agent at Regular Competitions, Eventing Competitions, Dressage Competitions, Reining Competitions and Combined Driving Competitions upon payment of a Show Pass fee. Participants in the following classes are exempted from the Requirements of this rule: 1) leadline; 2) exhibitions; 3) games and races; 4) classes for 4-H members; 5) walk trot and academy classes (academy classes are classes limited to horses used regularly in a lesson program); 6) USDF introductory level tests, pas de deux and quadrille classes; 7) assistant handlers in Dressage Sport Horse Breeding classes

Protective headgear –DR120.1.1 (GR801)

Protective headgear in compliance with the accepted testing standards published on the Federation's website. Protective headgear must carry the applicable quality testing tag and/or label. See GR801. From the time horses are officially admitted to the competition grounds by competition management, anyone mounted on a horse at any time on the competition grounds, including non-competing riders, riders on non-competing horses, mounted participants in exhibition classes, and those competing in all classes and tests, including Para Dressage tests, must wear protective headgear as defined by this rule and otherwise in compliance with GR801. The harness must be secured and properly fitted. Any rider violating this rule at any time must immediately be prohibited from further riding until the headgear is properly in place. Protective headgear may be the same as or a coordinating color with the coat, and may include contrast coloring, accent, and crystal decoration. See DR136 for dress code rules for exhibitions.

Safe Sport Reminder: All USEF Life and Senior Active members, as well as participants who have regular contact with minor athletes, are required to comply with the U.S. Center for SafeSport training requirement to be eligible to participate in the competition. All participants must adhere to the U.S. Center for SafeSport Code, USEF Safe Sport Policy, and the Minor Athlete Abuse Prevention Policies. More information about these can be found at www.usef.org.

Sharps Disposal: Competition management may fine any individuals including trainers, owners, exhibitors, or their agents up to \$100 for improper disposal of needles or other sharp disposable instruments. Containers are located at the end of each barn aisle and within center aisles when center aisles are present within the barns.

HITS

East Coast Rider's Cup

The East Coast Rider's Cup, ECRC, was created in 1993 to promote recognition of the competitors and their mounts. By combining the two highest tests of the level, it shows a true champion who maintains that level of excellence through both rides.

In 2022, it had been changed by combining two rides at the highest test of the level and for FEI by combining PSG/I1 and I2/GP for the championships. In 2023, it has been modified again to better recognize the top performers throughout the year at HITS Hudson Valley Dressage Shows.

Qualify:

To qualify, horse/rider combination must receive two qualifying scores from the highest test of the level from attending at least two different 'weekend' shows, ie previous year September, and current year May, June, and July. For FEI at least one score must be from I1 for the PSG/I1 championships and one score from GP for the I2/GP Championships.

Championships will be Training thru Fourth and PSG/I1 and I2/GP in four divisions, Open, Adult Amateur, JrYR and NEW THIS YEAR, Mature Division (60yo plus AA).

Level	Open	AA	JrYR
Training Level (Test 3)	68%	63%	63%
First Level (Test 3)	66%	62%	62%
Second Level (Test 3)	64%	61%	61%
Third Level (Test 3)	62%	60%	60%
Fourth Level (Test 3)	62%	60%	60%
Prix St George	62%	60%	60%
Intermediate I	62%	60%	60%
Intermediate II	62%	60%	60%
Grand Prix	62%	60%	60%
YR Team			62%
JR Team			62%

Awards:

There will be one Champion and one Reserve champion plus third thru sixth placings for each division. The Champion and Reserve Champion will receive a ribbon and prize (TBA) at HITS Hudson Valley Dressage August.

Requirements:

1. Open to all competitors residing anywhere on the planet earth and open to horses of any breed sex, size, or color.
2. Same horse/rider combination for both tests.
3. For Training through Fourth levels, the two rides at the highest test of the level will be ridden in designated classes. Tests maybe read and whips maybe carried.
4. For the FEI levels, two tests of the PSG/I1 level will be ridden and two tests of the I2/GP, ie one PSG and one I1. Both tests must be ridden in designated classes to be considered for ECRC. Whips maybe carried.

5. The placing will be determined by the combined average of the percentage score from both rides. Both tests must be ridden in designated classes for ECRC with the correct fees paid.
6. Ties will be broken on combined collective marks. If still remained tie, then place remains tied, and prizes will be combined and then split according to the USEF rules.
7. USEF Rules for riding the tests must be followed.
8. The same score may also be used as a qualifier for the USDF/GAIG Regional Championships with the correct fee to management. Please check prize list and note on entry form.

USEF Competition Name:

USEF#:

Competition Division(s) and Rating(s):



MAAPP

MINOR ATHLETE ABUSE PREVENTION

LEARN ABOUT MAAP POLICIES



Safe Sport Training



Local Travel



One-On-One Interactions



Social Media & Electronic Communications



Read about these & more at usef.org/MAAPP

REPORT MAAP POLICY VIOLATIONS



usef.org/safe-sport/reporting

859-225-6915 or Text Anonymously 855-682-8733



USDF Membership Benefits: USDF is dedicated to education, the recognition of achievement, and promotion of dressage. For details on member benefits, including educational programs, awards, and other opportunities, refer to the *USDF Member Guide* or the USDF website at www.usdf.org.

**This
competition
is recognized
by USDF
for 2025**

Membership Requirements for USEF-licensed/USDF-recognized Competitions: Owners and riders, including foreign riders and owners who are not residents of the US, wishing to participate in a USEF-licensed/USDF-recognized competition as a rider or owner/lessee, must have either a USDF Group Membership (GM), Participating Membership (PM), or have a USDF Non-Member (NM) identification number and pay the USDF Non-Member (NM) fee. (Note: USDF Business Members can own horses but cannot compete as riders with their USDF Business Membership.)

Horses competing at USEF-licensed/USDF-recognized competitions must have either a USDF Horse Identification (HID) number or a USDF Lifetime Horse Registration (LHR). Proper credentials or verification certificates must be presented to the competition secretary.

Riders and owners wishing to participate in a USEF-licensed/USDF-recognized competition, and not able to present the competition secretary with verification of a USDF membership or NM identification, and USDF LHR or USDF HID, must complete a USDF Competition Affidavit Form and pay the \$5 affidavit filing fee. A copy of a completed affidavit form from another competition may also be used for verification purposes for up to 60 days. (Exception: Affidavits cannot be used at Great American Insurance Group/USDF Regional Dressage Championships.)

Exceptions:

- Horses competing only in Individual Breed Classes (IBCs) at DSHB competitions, sires and dams of horses in DSHB group classes, where those sires or dams are not actually competing in the same competition, horses competing only in breed restricted dressage or DSHB classes at Regular Competitions (e.g. all Arabian, all Friesian, or all Morgan classes), or in USDF Introductory Level tests, pas de deux or quadrille, are exempt from this requirement. Also exempt are horses ridden in leadline, exhibitions, games and races, classes for 4-H members, walk-trot, academy, and opportunity classes.
- Riders and owners/lessees competing only in classes which are exempt from the USDF HID requirements are also exempt from the USDF NM identification number and NM fee requirements. Also exempt are handlers of horses competing in DSHB In-Hand or Group classes.

Memberships Defined

Participating Membership (PM): A membership issued to an individual directly by USDF. The membership year is December 1 through November 30. PMs are available for 1-year (\$100), 5-years (\$400), or life (\$2,000). A USDF Youth Participating Membership (YPM) is available for individuals who have not reached their 21st birthday by December 1 of the current membership year (\$80). A PM allows the member to compete at USEF-licensed/USDF-recognized competitions and to participate as a rider and/or owner/lessee for all Adequan®/USDF Year-End Awards and the Great American Insurance Group/USDF Regional Dressage Championship program.

Group Membership (GM): A membership issued to an individual by USDF when the member name and dues are submitted to USDF through an affiliate Group Member Organization (GMO). The GM year begins December 1 and ends November 30. A GM allows the member to compete at USEF-licensed/USDF-recognized competitions and participate in the USDF Rider Awards Program.

Business Membership (BM): A membership that runs December 1 through November 30 and is issued to a business or organization directly by USDF. The USDF BM (\$280) offers a wider variety of advertising benefits. BMs satisfy requirements of horse ownership only.

Non-Member (NM) Identification Number: For each USDF NM owner/lessee and USDF NM rider there will be a USDF NM fee of \$55 per competition that must be collected by the show secretary and submitted to USDF, along with the USDF Report of Fees document and the \$5 affidavit fee and Competition Affidavit Form if the person cannot provide a copy of their USDF NM card. Owners/lessees or riders exempt from the NM number requirements are also exempt from paying the USDF NM fee. If there are multiple owners of a horse and all are NMs, only one of the owners must pay the NM fee. If the horse has at least one owner who is a current USDF PM, GM, or BM there is no NM fee assessed. Competition management will be invoiced for all applicable USDF NM fees not received with the USDF post-competition paperwork, along with a report listing all USDF NMs. Competition management is then required to submit the NM fees within 30 days to the USDF. An individual with a USDF NM identification number is not eligible for any USDF membership benefits. Once a USDF NM number has been assigned, a USDF NM card can be obtained from the USDF website.

Horse Identification (HID) Number: A one-time tracking number for horses (\$45). Scores earned by a horse with an HID number will be recorded but will NOT be counted towards Adequan®/USDF Year-End Awards. A horse with an HID number is not eligible to compete in Great American Insurance Group/USDF Regional qualifying or championship classes. An HID number can be upgraded to a Lifetime Horse Registration (LHR) for a fee of \$95. If a horse has a USDF LHR it does not need an HID number. An HID number is a one-time fee that does not need to be renewed.

Lifetime Horse Registration (LHR): A horse with an LHR (\$140) is eligible for Adequan®/USDF Year-End Awards, and eligible to compete in Great American Insurance Group/USDF Regional qualifying and championship classes, assuming requirements for the owner and rider are met. If a horse has an LHR it does not need an HID number. An LHR does not need to be renewed.

How to Join USDF

Applications for USDF Participating Membership (PM), Business Membership (BM), Horse Identification (HID) number, and Lifetime Horse Registration (LHR) may be found in the following locations:

- On the USDF website: www.usdf.org. You can submit the application online or download the form.
- In the show office at USEF-licensed/USDF-recognized competitions classified by USEF as Dressage Competitions, and Regular Competitions which are open to all breeds.
- By calling or writing the USDF office at (859) 971-2277, 4051 Iron Works Parkway, Lexington, KY 40511

The effective date of membership is the date the form and correct fees are received in the USDF office or, if applying at a competition, the date accepted by the competition secretary, provided the application is signed and dated by the competition secretary, member, and/or horse owner on that same day.

2025

Official Use Only
BRIDLE #

COMPETITION NAME _____ COMPETITION DATES _____

NAME OF HORSE		PREVIOUS NAME (IF ANY)		USEF#	USDF#	FOR SALE
BREED	SEX	HEIGHT	COLOR	COGGINS DATE (ENCLOSED COPY)	SIRE	DAM
DAM'S SIRE	COUNTRY OF BIRTH	YEAR OF BIRTH	BREEDER	FEI/PASSPORT #	MICROCHIP #	

RIDER/HANDLER _____

USEF# _____ USDF# _____ FEI/LOCAL# _____

ADDRESS _____

CITY/ST/ZIP _____

CELL PHONE _____ JR/YOUNG RIDER BIRTHDAY _____

EMAIL ADDRESS _____

RIDER CITIZENSHIP (IF NOT USA) _____

RIDER STATUS (CIRCLE ONE): JR/YG AA OPEN

OWNER _____

USEF# _____ USDF# _____ LOCAL# _____

ADDRESS _____

CITY/ST/ZIP _____

CELL PHONE _____

EMAIL ADDRESS _____

OWNER CITIZENSHIP (IF NOT USA) _____

TRAINER _____

USEF# _____ USDF# _____ LOCAL# _____

ADDRESS _____

CITY/ST/ZIP _____

CELL PHONE _____

EMAIL ADDRESS _____

COACH _____

USEF# _____ USDF# _____ LOCAL# _____

ADDRESS _____

CITY/ST/ZIP _____

Please complete all three pages. Reverse MUST be SIGNED.

CLASS NO.	DIVISION	CLASS DESCRIPTION	QUAL Y/N	FEES

SUBTOTAL CLASS FEES AND QUALIFYING FEES	
USDF NON MEMBER FEE \$55 PER NON-MEMBER	
OFFICE FEE AND/OR BRIDLE # FEE	
USEF HORSE FEES \$8 USEF FEE + \$15 DRUG FEE = \$23.00	
CDI HORSE FEES \$8 USEF FEE + \$25 DRUG FEE = \$33.00	
IHP DISCIPLINE FEE (\$35 IF REQUIRED)	
STABLING FEES _____ STALL @ \$ _____ /STALL	
TACK STALLS _____ STALL @ \$ _____ /STALL	
BEDDING _____ BALES @ \$ _____ /BALE	
NON COMPETING HORSE FEE	
SPONSORSHIP	
GROUND'S FEE OR OTHER FEES _____	
OTHER _____	
LATE/CHANGE/BANK CHARGES FOR CC	
TOTAL FEES	

Stabling Information & Special Requests: Please list only ONE name (either individual or barn) for entire group (so we can get everyone together)

Group/Self	Tue	Wed	Thu	Fri	Sat	Sun	Mon
Stalls							
Tack Stalls							

Stable Group: _____ Contact: _____



USDF

I hereby agree to release, indemnify and hold harmless USDF, its instructors, officers, directors, agents, and volunteers from and against any and all loss, liability or damage arising from or because of, or in connection with, participation in this competition or related activities. I also hereby agree to release, indemnify and hold harmless the competition licensee, show management, competition staff, show committee and members, officers, directors, agents, and volunteers from and against any and all loss, liability or damage arising from or because of, or in connection with, participation in this competition or related activities.

<input type="checkbox"/> VISA	<input type="checkbox"/> AMEX	CARD NO. _____ - _____ - _____	EXP DATE _____
<input type="checkbox"/> MasterCard	<input type="checkbox"/> Other _____	NAME ON CARD: _____	CVV # _____
BILLING ADDRESS _____		ZIP CODE _____	



FEDERATION ENTRY AGREEMENT

By entering a Federation-licensed Competition and signing this entry blank as the Owner, Lessee, Trainer, Manager, Agent, Coach, Driver, Rider, Handler, Vaultor or Longeur and on behalf of myself and my principals, representatives, employees and agents, I agree that I am subject to the Bylaws and Rules of the United States Equestrian Federation, Inc. (the "Federation") and the local rules of _____ (Competition). I agree to be bound by the Bylaws and Rules of the Federation and of the competition. I will accept as final the decision of the Hearing Committee on any question arising under the Rules, and agree to release and hold harmless the competition, the Federation, their officials, directors and employees for any action taken under the Rules. I represent that I am eligible to enter and/or participate under the Rules, and every horse I am entering is eligible as entered. I also agree that as a condition of and in consideration of acceptance of entry, the Federation and/or the Competition may use or assign photographs, videos, audios, cable - casts, broadcasts, internet, film, new media or other likenesses of me and my horse taken during the course of the competition for the promotion, coverage or benefit of the competition, sport, or the Federation. Those likenesses shall not be used to advertise a product and they may not be used in such a way as to jeopardize amateur status. I hereby expressly and irrevocably waive and release any rights in connection with such use, including any claim to compensation, invasion of privacy, right of publicity, or to misappropriation. The construction and application of Federation rules are governed by the laws of the State of New York, and any action instituted against the Federation must be filed in New York State. See GR908.4.

If not currently a USEF Active Competing member or Subscriber, I acknowledge that I will be enrolled for no cost as a USEF Fan and my USEF Fan Account will continue to annually automatically renew in USEF's sole discretion. Additionally, I acknowledge that the benefits of a USEF Fan are subject to change without notice. USEF may in its sole discretion, at any time, terminate my USEF Fan status. I acknowledge that I may opt out at any time by going to My USEF Dashboard or calling (859) 810-8733.

BY SIGNING BELOW, I AGREE that I have read, understand, and agree to be bound by all applicable Federation Bylaws, rules, and policies including the USEF Safe Sport Policy and Minor Athlete Abuse Prevention Policies (MAAPP) as published at www.usef.org, as amended from time to time, as well as all terms and provisions of this Prize List. If I am signing and submitting this Agreement electronically, I acknowledge that my electronic signature shall have the same validity, force and effect as if I affixed my signature by my own hand.

RIDER/DRIVER/HANDLER/VAULTER/LONGEUR (mandatory)

Signature: _____

Print Name: _____

TRAINER (mandatory)

Signature: _____

Print Name: _____

OWNER/AGENT (mandatory)

Signature: _____

Print Name: _____

COACH (if applicable)

Signature: _____

Print Name: _____

Parent/Guardian Signature: (Required if Rider/Driver/Handler/Vaultor/Longeur is a minor) _____

Print Parent//Guardian Name: _____ Emergency Contact Phone No. _____

Is Rider/Driver/Vaultor a U.S. Citizen: ___ Yes ___ No



WAIVER AND RELEASE OF LIABILITY, ASSUMPTION OF RISK AND INDEMNITY AGREEMENT

For and in consideration of United States Equestrian Federation, Inc. dba US Equestrian ("USEF") allowing me, the undersigned, to participate in any capacity (including as a rider, driver, handler, vaulter, longeur, lessee, owner, agent, coach, official, trainer or volunteer) in a USEF sanctioned, licensed or approved event or activity, including but not limited to equestrian clinics, practices, shows, competitions and related or incidental activities and _____ ("USEF Event" or "USEF Events"); I, for myself, and on behalf of my spouse, children, heirs and next of kin, and any legal and personal representatives, executors, administrators, successors, and assigns, hereby agree to and make the following contractual representations pursuant to this Agreement (the "**Agreement**"):

A. **RULES AND REGULATIONS:** I hereby agree that I have read, understand, and agree to be bound by all applicable Federation Bylaws, rules, and policies including the USEF Safe Sport Policy and Minor Athlete Abuse Prevention Policies (MAAPP) as published at www.usef.org, as amended from time to time.

B. **ACKNOWLEDGMENT OF RISK:** I knowingly, willingly, and voluntarily acknowledge the inherent risks associated with the sport of equestrian and know that horseback riding and related equestrian activities are inherently dangerous, and that participation in any USEF Event involves risks and dangers including, without limitation, the potential for serious bodily injury (including broken bones, head or neck injuries), sickness and disease (including communicable diseases), trauma, pain & suffering, permanent disability, paralysis and death; loss of or damage to personal property (including my mount & equipment) arising out of the unpredictable behavior of horses; exposure to extreme conditions and circumstances; accidents involving other participants, event staff, volunteers or spectators; contact or collision with other participants and horses, natural or manmade objects; adverse weather conditions; facilities issues and premises conditions; failure of protective equipment (including helmets); inadequate safety measures; participants of varying skill levels; situations beyond the immediate control of the USEF Event organizers and competition management; and other undefined, not readily foreseeable and presently unknown risks and dangers ("**Risks**").

WARNING:

HORSEBACK RIDING AND EQUINE ACTIVITIES CAN BE DANGEROUS. RIDE AT YOUR OWN RISK. Under the laws New York, an equine activity sponsor or equine professional may not be liable for any injury to, or the death of, a participant in equine activities resulting from the inherent risks of equine activities. See SECTION 18-301-303 OF THE GENERAL OBLIGATIONS LAW.

C. **ASSUMPTION OF RISK:** I understand that the aforementioned Risks may be caused in whole or in part or result directly or indirectly from the negligence of my own actions or inactions, the actions or inactions of others participating in the USEF Events, or the negligent acts or omissions of the Released Parties defined below, and I hereby voluntarily and knowingly assume all such Risks and responsibility for any damages, liabilities, losses, or expenses that I incur as a result of my participation in any USEF Events. I also agree to be responsible for any injury or damage caused by me, my horse, my employees or contractors under my direction and control at any USEF Event.

D. **WAIVER AND RELEASE OF LIABILITY, HOLD HARMLESS AND INDEMNITY:** In conjunction with my participation in any USEF Event, I hereby release, waive and covenant not to sue, and further agree to indemnify, defend and hold harmless the following parties: USEF, USEF Recognized Affiliate Associations, the United States Olympic & Paralympic Committee (USOPC), USEF clubs, members, Event participants (including athletes/riders, coaches, trainers, judges/officials, and other personnel), the Event owner, licensee, and competition managers; the promoters, sponsors, or advertisers of any USEF Event; any charity or other beneficiary which may benefit from the USEF Event; the owners, managers, or lessors of any facilities or premises where a USEF Event may be held; and all directors, officers, employees, agents, contractors, and volunteers of any of the aforementioned parties (**Individually and Collectively, the "Released Parties" or "Event Organizers"**), with respect to any liability, claim(s), demand(s), cause(s) of action, damage(s), loss, or expense (including court costs and reasonable attorney fees) of any kind or nature ("**Liability**") which may arise out of, result from, or relate in any way to my participation in the USEF Events, including claims for Liability caused in whole or in part by the negligent acts or omissions of the Released Parties.

E. **COMPLETE AGREEMENT AND SEVERABILITY CLAUSE:** This Agreement represents the complete understanding between the parties regarding these issues and no oral representations, statements or inducements have been made apart from this Agreement. If any provision of this Agreement is held to be unlawful, void, or for any reason unenforceable, then that provision shall be deemed severable from this Agreement and shall not affect the validity and enforceability of any remaining provisions.

I HAVE CAREFULLY READ THIS DOCUMENT IN ITS ENTIRETY, UNDERSTAND ALL OF ITS TERMS AND CONDITIONS, AND KNOW IT CONTAINS AN ASSUMPTION OF RISK, RELEASE AND WAIVER FROM LIABILITY, AS WELL AS A HOLD HARMLESS AND INDEMNIFICATION OBLIGATIONS.

By signing below, that I have read, understand, and agree to be bound by all applicable Federation Bylaws, rules, and policies including the USEF Safe Sport Policy and Minor Athlete Abuse Prevention Policies (MAAPP) as published at www.usef.org, as amended from time to time, as well as all terms and provisions of this Prize List. If, despite this Agreement, I, or anyone on my behalf or the minor's behalf, makes a claim for Liability against any of the Released Parties, I will indemnify, defend and hold harmless each of the Released Parties from any such Liabilities as the result of such claim.

The parties agree that this agreement may be electronically signed. The parties agree that the electronic signatures appearing on this agreement are the same as handwritten signatures for the purposes of validity, enforceability, and admissibility.

☐ RIDER/DRIVER/HANDLER/VAULTER/LONGEUR ☐ OWNER ☐ TRAINER ☐ OFFICIAL ☐ STAFF ☐ VOLUNTEER ☐ COACH (IF APPLICABLE)

Signature: _____ Date: _____ Print Name: _____

Parent/Guardian Signature: (Required if Rider/Driver/Handler/Vaulter/Longeur is a minor) _____ Date: _____

Print Parent//Guardian Name: _____ Emergency Contact Phone No. _____

11.16.23



HITS

ENJOY THE PREMIER HITS EXPERIENCE FROM COAST TO COAST, with six iconic venues, elite competition opportunities, generous prize money offerings, and unique hospitality. From the dazzling hunters and incredible jumpers to the captivating dressage movements, HITS hosts more than 130 weeks of hunter/jumper and dressage competitions throughout the year.



THE ACTION-PACKED HUNTER/JUMPER HORSE SHOW SCHEDULE IN 2025 across HITS Chicago, HITS Culpeper, HITS Del Mar, HITS Hudson Valley, HITS Ocala, and HITS Vermont includes seven weeks (pending USEF approval of International FEI show jumping competition, as well as five weeks with a World Champion Hunter Rider (WCHR) designation.

Plus, exhibitor-favorite classes exclusive to HITS, such as the STX Open Speed Series, Horseflight Jumper Classic Series, Arion Sellier Equitation Championships, and the ClipMyHorse.tv qualifiers toward the 2025 \$200,000 ClipMyHorse.tv Hunter Classic Final, make HITS the place to be all year long.

HITS OCALA
POST TIME FARM

December to March

HITS CULPEPER
COMMONWEALTH PARK

April to September

HITS CHICAGO
LAMPLIGHT
EQUESTRIAN CENTER
May to September

HITS SAUGERTIES
HITS-ON-THE-HUDSON

May to October

HITS VERMONT
HAROLD BEEBE FARM

July to August

HITS DEL MAR
DEL MAR HORSEPARK

April to August

THIS IS MORE THAN A HORSE SHOW, **THIS IS HITS!**

THE
LEAGUE | presented by
**MARSHALL
+ STERLING**



HITS

DRESSAGE RIDERS CAN STRUT DOWN CENTERLINE WITH EXCITING COMPETITION

at HITS Chicago, HITS Del Mar, HITS Hudson Valley, and new in 2025, HITS Culpeper. Highlighted by three CDI weeks at HITS Del Mar, the U.S. Dressage Festival of Champions at HITS Chicago, and the Great American Insurance Group/United States Dressage Federation Region 8 Dressage Championship at HITS Hudson Valley, these popular series offer classes for horses and riders of all levels.



HITS CULPEPER
COMMONWEALTH PARK

June 20-22

HITS CHICAGO
LAMPLIGHT EQUESTRIAN CENTER

May to August

HITS SAUGERTIES
HITS-ON-THE-HUDSON

May to September

HITS DEL MAR
DEL MAR HORSE PARK

February to October